

McNeal Elementary School District

Cochise County
Operational peer group: L
Legislative districts: 25

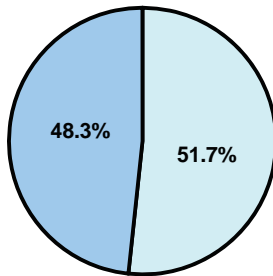
District size: Very Small
Students attending: 51
Number of schools: 1

OPERATIONAL EFFICIENCY

Average per-pupil spending

District
State

Classroom
\$6,506
\$4,497



Nonclassroom
\$6,954
\$3,411

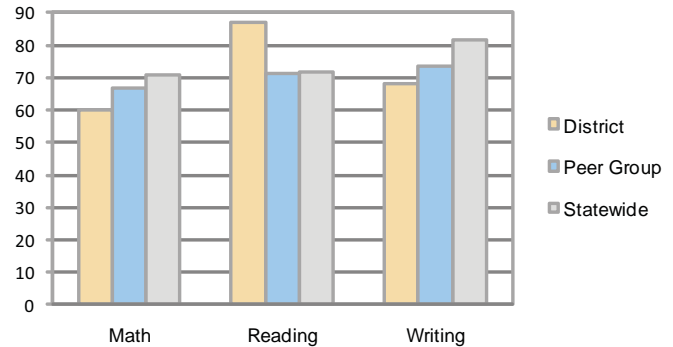
Total
\$13,460
\$7,908

5-year trend

Total spending per pupil increased by 27 percent. Spending in the classroom was very inconsistent year to year and decreased overall from 49.9 to 48.3 percent. Spending on food service increased significantly, while spending in other nonclassroom areas was very inconsistent year to year.

STUDENT ACHIEVEMENT AND TEACHER INFORMATION

Percentage of students meeting state standards (AIMS)



Adequate Yearly Progress (AYP) toward federal goals

The District's school met all applicable AYP objectives for NCLB.

District's cost measures relative to peer group

Operational Area	Measure	District	Peer Average	State Average
Administration	Cost per pupil	\$2,907	\$2,656	\$729
	Students per administrator	34	32	66
Plant Operations	Cost per square foot	\$9.79	\$7.53	\$6.40
	Square footage per student	167	318	144
Food Service	Cost per meal equivalent	\$4.06	\$5.10	\$2.53
Transportation	Cost per mile	\$0.66	\$1.79	\$3.36
	Miles per rider	1,131	710	271

Very Low Low Comparable High Very High

Student and teacher information

Measure	District	Peer average	State average
Attendance rate	96%	94%	95%
Graduation rate (2008)	N/A	54%	75%
Poverty rate	31%	31%	19%
Student/teacher ratio	10.2	10.8	17.1
Average teacher salary	\$44,854	\$45,165	\$45,209
Average years' experience	10.8	12.7	8.3
Percent of teachers in first 3 years	44%	15%	16%

Proposition 301

Teacher pay

On average, each teacher earned \$3,642 in additional salary.

Performance pay plan goals and results

Type of goal	Goal met?
Student achievement	■
Dropout/ graduation rates	
Student attendance	
Parent/student satisfaction	■
Teacher attendance	
Teacher professional development	
Teacher evaluations	
Tutoring	
Other	■

■ = yes, □ = no, and ▴ = partially

Per-pupil spending by function

	District		Peer 2009	State 2009	National 2007
	2008	2009			
Total	\$11,971	\$13,460	\$16,311	\$7,908	\$9,683
Classroom dollars	\$6,198	\$6,506	\$8,757	\$4,497	\$5,903
Nonclassroom dollars:	\$5,773	\$6,954	\$7,554	\$3,411	\$3,780
Administration	2,469	2,907	2,656	729	1,050
Plant Operations	1,311	1,635	2,297	920	951
Food Service	941	1,062	859	382	369
Transportation	470	609	930	343	406
Student Support	447	677	474	594	512
Instruction Support	135	64	338	431	470
Other	0	0	0	12	22