

# Mesa Unified School District

Maricopa County  
 Operational peer group: A  
 Legislative districts: 17, 18, 19, 20, 21, 22, 23

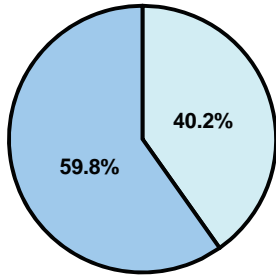
District size: Very Large  
 Students attending: 65,750  
 Number of schools: 89

## OPERATIONAL EFFICIENCY

### Average per-pupil spending

District  
 State

Classroom  
**\$4,722**  
 \$4,497



Nonclassroom  
**\$3,172**  
 \$3,411

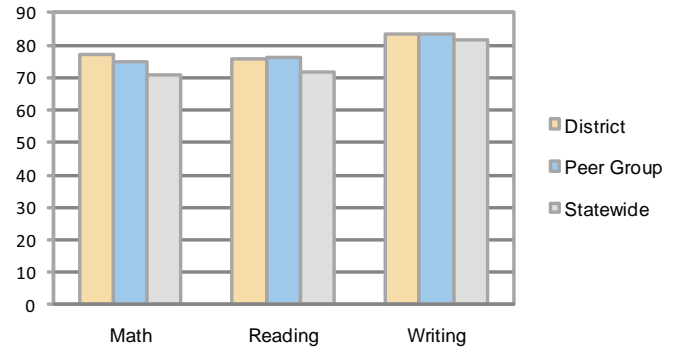
Total  
**\$7,894**  
 \$7,908

### 5-year trend

Total spending per pupil increased by 29 percent. Spending in the classroom varied year to year and decreased significantly overall from 63.1 to 59.8 percent. Spending on transportation and instruction support increased, while spending in other nonclassroom areas remained fairly stable.

## STUDENT ACHIEVEMENT AND TEACHER INFORMATION

### Percentage of students meeting state standards (AIMS)



### Adequate Yearly Progress (AYP) toward federal goals

71 schools met AYP objectives for NCLB. 16 did not for 1 or more of the following objectives: percentage of students tested (8); academic progress (9); attendance rate (2); graduation rate (1). 2 schools have no AYP determination.

### Student and teacher information

Measure	District	Peer average	State average
Attendance rate	95%	96%	95%
Graduation rate (2008)	81%	86%	75%
Poverty rate	16%	14%	19%
Student/teacher ratio	17.5	17.5	17.1
Average teacher salary	\$55,714	\$50,748	\$45,209
Average years' experience	13.8	10.5	8.3
Percent of teachers in first 3 years	14%	20%	16%

### District's cost measures relative to peer group

Operational Area	Measure	District	Peer Average	State Average
Administration	Cost per pupil	\$625	\$639	\$729
	Students per administrator	70	77	66
Plant Operations	Cost per square foot	\$7.12	\$6.38	\$6.40
	Square footage per student	124	138	144
Food Service	Cost per meal equivalent	\$2.34	\$2.49	\$2.53
Transportation	Cost per mile	\$4.46	\$4.22	\$3.36
	Miles per rider	316	298	271

Very Low    Low    Comparable    High    Very High

### Proposition 301

#### Teacher pay

On average, each teacher earned \$6,766 in additional salary, and each instructional aide, librarian, and counselor earned between \$1,654 and \$5,087.

#### Performance pay plan goals and results

Type of goal	Goal met?
Student achievement	▴
Dropout/ graduation rates	■
Student attendance	■
Parent/student satisfaction	▴
Teacher attendance	■
Teacher professional development	■
Teacher evaluations	■
Tutoring	■
Other	■

■ = yes, □ = no, and ▴ = partially

### Per-pupil spending by function

	District		Peer	State	National
	2008	2009	2009	2009	2007
<b>Total</b>	<b>\$7,867</b>	<b>\$7,894</b>	<b>\$7,781</b>	<b>\$7,908</b>	<b>\$9,683</b>
<b>Classroom dollars</b>	<b>\$4,828</b>	<b>\$4,722</b>	<b>\$4,577</b>	<b>\$4,497</b>	<b>\$5,903</b>
<b>Nonclassroom dollars:</b>	<b>\$3,039</b>	<b>\$3,172</b>	<b>\$3,204</b>	<b>\$3,411</b>	<b>\$3,780</b>
Administration	600	625	639	729	1,050
Plant Operations	796	886	881	920	951
Food Service	369	370	322	382	369
Transportation	392	405	330	343	406
Student Support	464	442	616	594	512
Instruction Support	392	405	398	431	470
Other	26	39	18	12	22