

Miami Unified School District

Gila County

Peer groups: Operational 5 and T-7, Achievement 7¹

Legislative district(s): 8

District location: Rural

Number of schools: 3

Graduation rate (2018): NR

Students attending; Size: 974; Medium

5-year change in students attending: 10% decrease

Special education population: 9%

English learner population: 3%

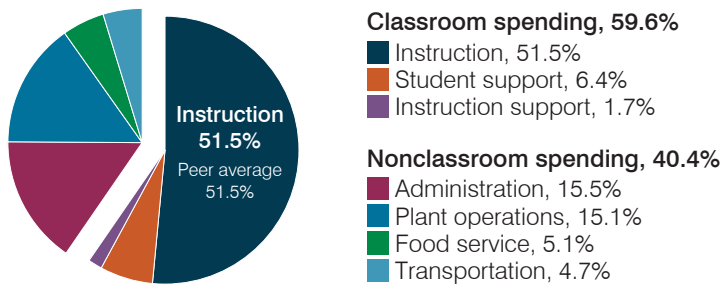
Poverty rate (2018): 41%

Free/reduced meal eligibility: 64%

Instructional spending percentage by year

2001	2002	2003	2004	2005	2006	2007	2008	2009	2010	2011	2012	2013	2014	2015	2016	2017	2018	2019
52.0	54.7	52.1	56.1	57.7	55.1	53.5	55.7	55.1	54.3	55.4	53.5	54.8	55.4	54.2	55.3	54.5	53.0	51.5

Spending by operational area



Operational measures relative to peer averages

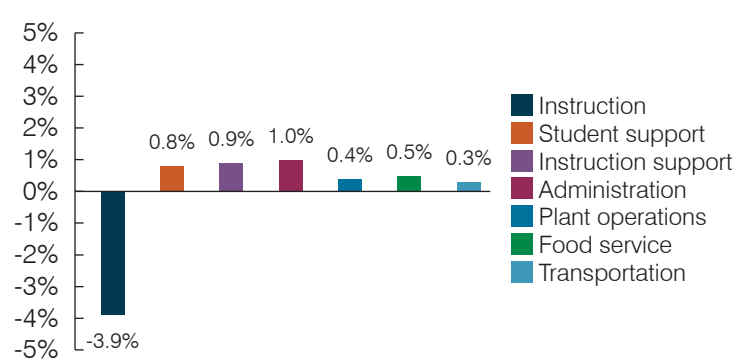
Operational area	Measure	District	Peer average	State average
Administration	Cost per pupil	\$1,334	\$1,190	\$903
	Students per administrative position	54	60	66
Plant operations	Cost per square foot	\$5.17	\$5.67	\$6.49
	Square footage per student	251	257	158
Food service	Cost per meal	\$3.90	\$3.60	\$3.08
Transportation	Cost per mile	\$5.14	\$3.70	\$4.29
	Cost per rider	\$1,324	\$1,127	\$1,424



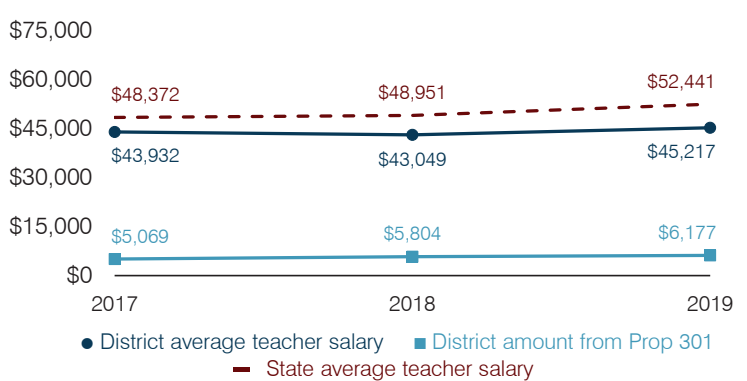
Per pupil spending

Spending by area	District		Peer average 2019	State average 2019
	2018	2019		
Instruction	\$ 4,418	\$ 4,423	\$ 5,148	\$ 4,869
Student support	469	548	655	754
Instruction support	155	145	436	497
Administration	1,242	1,334	1,190	903
Plant operations	1,232	1,295	1,416	1,027
Food service	449	444	428	438
Transportation	370	407	546	417
Total operational	8,335	8,596	9,819	8,905
Land and buildings	315	123	1,012	1,086
Equipment	562	654	658	496
Interest	28	24	238	261
Other	1	7	84	180
Total nonoperational	906	808	1,992	2,023
Total per pupil spending	\$ 9,241	\$ 9,404	\$11,811	\$10,928

Percentage point change in spending by operational area (fiscal year 2014 versus 2019)

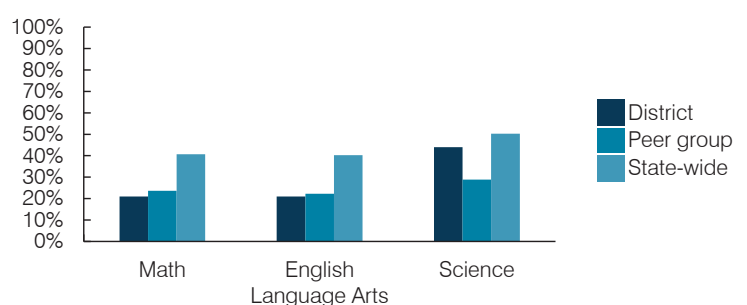


Average teacher salary and other measures



Measure	2017	2018	2019
Students per teacher	18.9	17.1	17.8
Average years of teacher experience	17.5	16.5	15.8
Percentage of teachers in first 3 years	5%	14%	20%

Students who passed State assessments²



¹ See Appendix A for information, such as districts included in each peer group, and Appendix B for sources and methodology.

² School letter grades are available at <https://azreportcards.azed.gov>.