

Classroom Dollars and Proposition 301 Results

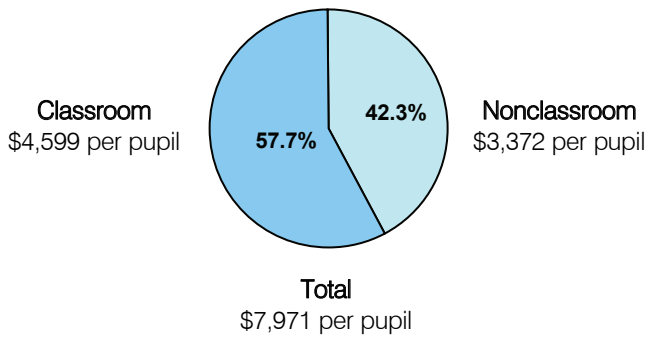
Miami Unified School District

Gila County

District size: Medium
 Students attending: 1,026
 Number of schools: 4
 Number of certified teachers: 72

Classroom Dollars

Fiscal year 2005

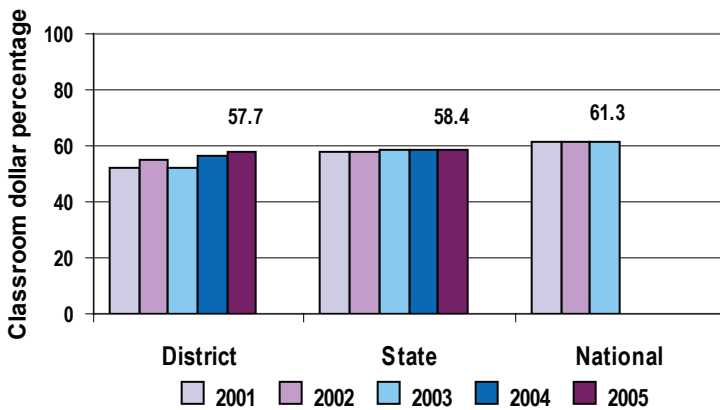


Comparative Information

	District			State
	2003	2004	2005	2005
Student/teacher ratio	13.5	16.3	14.3	18.3
Average teacher salary	\$34,351	\$34,996	\$40,554	\$39,095
Average years' experience	11.2	10.6	10.9	8.5

Classroom dollar ranking: 82 of 228 districts.

5-year comparison



Expenditures by function

	District					State	National
	2001	2002	2003	2004	2005	2005	2002
Classroom dollars	52.0	54.7	52.1	56.1	57.7	58.4	61.5
Nonclassroom dollars:							
Administration	14.2	14.2	13.8	12.7	14.3	9.5	11.1
Plant operations	14.5	13.0	14.4	15.0	13.3	11.4	9.5
Food service	5.3	4.7	5.1	5.2	4.7	4.8	4.0
Transportation	6.0	5.5	6.0	3.0	2.7	4.1	4.0
Student support	7.0	6.8	6.7	6.2	4.9	7.0	5.0
Instruction support	1.0	1.1	1.9	1.8	2.3	4.6	4.7
Other					0.1	0.2	0.2

Proposition 301

District-reported 2005 results

Teacher pay

- On average, each teacher earned an additional \$5,685 in salary, and each counselor earned an additional \$5,825.

Performance

- The District accomplished its goals, which were based on school and individual performance.
- 70 percent of students scored 70 percent or better on unit assessments.
- Student attendance and graduation rates met state requirements.
- Teachers participated in at least 80 percent of the grade-level collaboration committee meetings held.
- Teachers also attended 8 hours of professional development in curriculum writing and provided a minimum of 8 hours of tutoring per quarter.

Menu

- Monies were used solely to increase eligible employee compensation.