

Classroom Dollars and Proposition 301 Results

Miami Unified School District

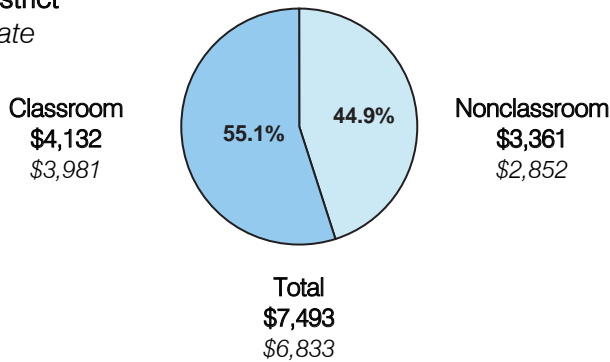
Gila County

District size: Medium
 Students attending: 1,046
 Number of schools: 4
 Number of certified teachers: 69

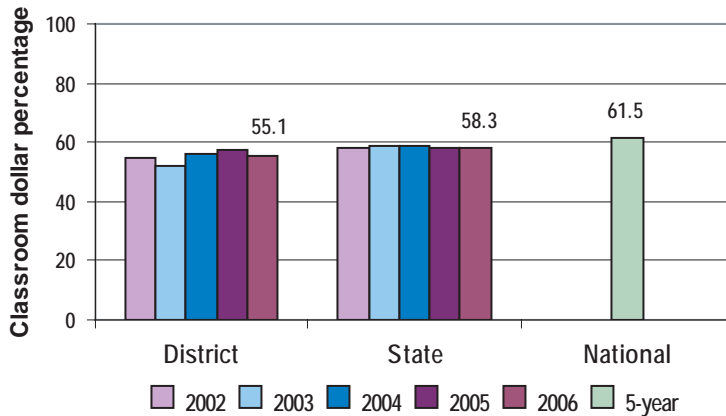
Classroom Dollars

Fiscal year 2006 averages per pupil

District
 State



5-year comparison



Expenditures by function

	District					State 2006	National 5-year
	2002	2003	2004	2005	2006		
Classroom dollars	54.7	52.1	56.1	57.7	55.1	58.3	61.5
Nonclassroom dollars:							
Administration	14.2	13.8	12.7	14.3	15.3	9.4	11.0
Plant operations	13.0	14.4	15.0	13.3	12.8	11.2	9.6
Food service	4.7	5.1	5.2	4.7	4.8	4.7	3.9
Transportation	5.5	6.0	3.0	2.7	3.4	4.2	4.0
Student support	6.8	6.7	6.2	4.9	5.1	7.2	5.1
Instruction support	1.1	1.9	1.8	2.3	3.5	4.8	4.7
Other				0.1		0.2	0.2

Comparative Information

	District			State 2006
	2004	2005	2006	
Student/teacher ratio	16.3	14.3	15.2	17.7
Average teacher salary	\$34,996	\$40,554	\$40,023	\$42,967
Average years' experience	10.6	10.9	11.3	8.3

Classroom dollar ranking: 117 of 229 districts.

Proposition 301

District-reported 2006 results

Teacher pay

- On average, each teacher earned an additional \$4,393 in salary, each counselor earned an additional \$4,266, and each instructional aide earned an additional \$689.

Performance

- The District accomplished its goals, which were similar to the prior fiscal year's goals and were based on school and individual performance.
- High school students demonstrated Adequate Yearly Progress in standardized test scores.
- All kindergarten through 8th-grade students earned 70 percent or better on unit assessments.
- Eligible employees participated in at least 8 hours of professional development activities, attended at least 80 percent of the grade-level collaboration committee meetings held, and received acceptable performance evaluations.

Menu

- Monies were used solely to increase eligible employee compensation.