

Classroom Dollars and Proposition 301 Results

Miami Unified School District

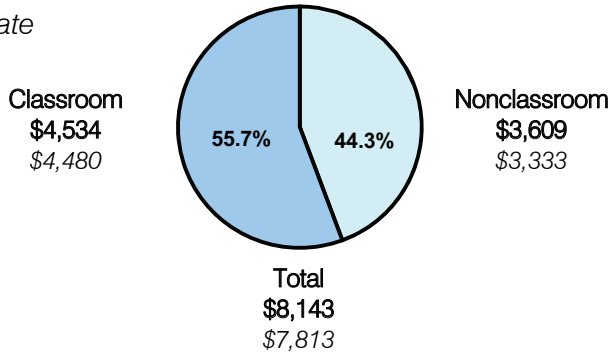
Gila County

District size: Medium
 Students attending: 1,134
 Number of schools: 4
 Number of certified teachers: 72

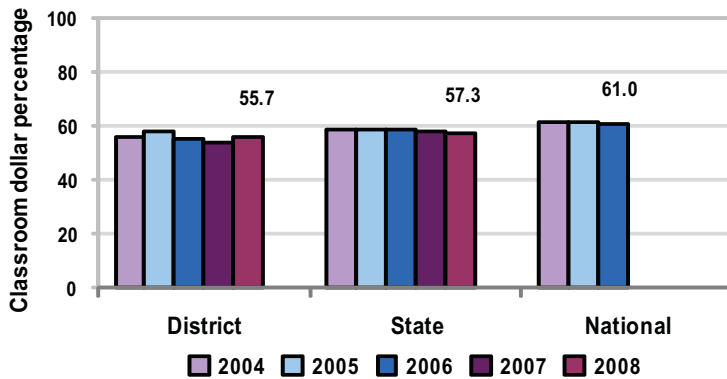
Classroom Dollars

Fiscal year 2008 averages per pupil

District
 State



5-year comparison



Expenditures by function

	District					State 2008	National 2006
	2004	2005	2006	2007	2008		
Classroom dollars	56.1	57.7	55.1	53.5	55.7	57.3	61.0
Nonclassroom dollars:							
Administration	12.7	14.3	15.3	15.5	15.0	9.2	10.8
Plant operations	15.0	13.3	12.8	13.3	13.2	11.3	9.9
Food service	5.2	4.7	4.8	6.0	5.4	4.8	3.8
Transportation	3.0	2.7	3.4	3.4	3.7	4.4	4.2
Student support	6.2	4.9	5.1	6.2	5.4	7.4	5.2
Instruction support	1.8	2.3	3.5	2.1	1.6	5.4	4.9
Other		0.1				0.2	0.2

Comparative Information

	District			State 2008
	2006	2007	2008	
Student/teacher ratio	15.2	16.9	15.8	17.3
Average teacher salary	\$40,023	\$43,516	\$41,576	\$44,967
Average years' experience	11.3	11.2	11.6	8.1

Classroom dollar ranking: 106 of 230 districts.

Proposition 301

District-reported 2008 results

Teacher pay

- On average, each teacher and counselor earned between \$6,042 and \$6,212 in additional salary, and each instructional aide earned an additional \$544.

Performance

- The District accomplished its goals, which were the same as the prior fiscal year's goals and were based on school and individual performance.
- 70 percent of high school students achieved 70 percent or better on semester exams, and 75 percent of kindergarten through 8th-grade students met 75 percent or more of the class objectives.
- Eligible employees participated in at least 8 hours of professional development activities, received acceptable performance evaluations, attended at least 80 percent of curriculum and committee meetings, and provided 8 hours of tutoring.

Menu

- Monies were used solely to increase eligible employee compensation.