

# Mingus Union High School District

Yavapai County  
Operational peer group: E  
Legislative districts: 1

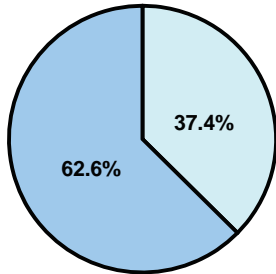
District size: Medium  
Students attending: 1,211  
Number of schools: 1

## OPERATIONAL EFFICIENCY

### Average per-pupil spending

District  
State

Classroom  
**\$4,790**  
\$4,497



Nonclassroom  
**\$2,861**  
\$3,411

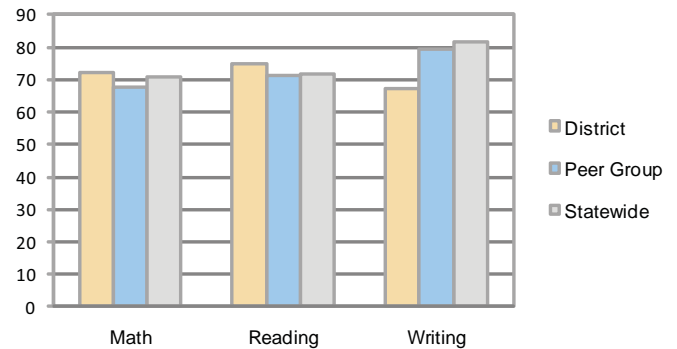
Total  
**\$7,651**  
\$7,908

### 5-year trend

Total spending per pupil increased by 19 percent. Spending in the classroom was very inconsistent year to year and increased significantly overall from 58.6 to 62.6 percent. Spending on student support decreased significantly, while spending in other nonclassroom areas varied year to year.

## STUDENT ACHIEVEMENT AND TEACHER INFORMATION

### Percentage of students meeting state standards (AIMS)



### Adequate Yearly Progress (AYP) toward federal goals

The District's school met all applicable AYP objectives for NCLB.

### District's cost measures relative to peer group

Operational Area	Measure	District	Peer Average	State Average
Administration	Cost per pupil	\$825	\$1,148	\$729
	Students per administrator	65	51	66
Plant Operations	Cost per square foot	\$5.65	\$5.49	\$6.40
	Square footage per student	164	253	144
Food Service	Cost per meal equivalent	N/A	\$3.07	\$2.53
Transportation	Cost per mile	\$3.14	\$2.53	\$3.36
	Miles per rider	357	359	271

Very Low   Low   Comparable   High   Very High

### Student and teacher information

Measure	District	Peer average	State average
Attendance rate	95%	95%	95%
Graduation rate (2008)	72%	70%	75%
Poverty rate	18%	15%	19%
Student/teacher ratio	18.1	16.8	17.1
Average teacher salary	\$50,023	\$42,842	\$45,209
Average years' experience	9.6	10.1	8.3
Percent of teachers in first 3 years	21%	24%	16%

### Proposition 301

#### Teacher pay

On average, each teacher earned an additional \$6,547 in salary, and each librarian and counselor earned between \$6,852 and \$6,933.

#### Performance pay plan goals and results

Type of goal	Goal met?
Student achievement	■
Dropout/ graduation rates	
Student attendance	
Parent/student satisfaction	
Teacher attendance	
Teacher professional development	■
Teacher evaluations	
Tutoring	
Other	■

■ = yes, □ = no, and ▮ = partially

### Per-pupil spending by function

	District		Peer	State	National
	2008	2009	2009	2009	2007
<b>Total</b>	<b>\$7,348</b>	<b>\$7,651</b>	<b>\$9,562</b>	<b>\$7,908</b>	<b>\$9,683</b>
<b>Classroom dollars</b>	<b>\$4,302</b>	<b>\$4,790</b>	<b>\$4,925</b>	<b>\$4,497</b>	<b>\$5,903</b>
<b>Nonclassroom dollars:</b>	<b>\$3,046</b>	<b>\$2,861</b>	<b>\$4,637</b>	<b>\$3,411</b>	<b>\$3,780</b>
Administration	853	825	1,148	729	1,050
Plant Operations	984	928	1,379	920	951
Food Service	0	0	444	382	369
Transportation	355	319	554	343	406
Student Support	708	603	749	594	512
Instruction Support	146	186	356	431	470
Other	0	0	7	12	22