

Mingus Union High School District

Yavapai County

Efficiency peer groups 5 and T-6, Achievement peer group 10

Legislative district(s): 1 and 6

District size, location:

Medium, Town

Students attending:

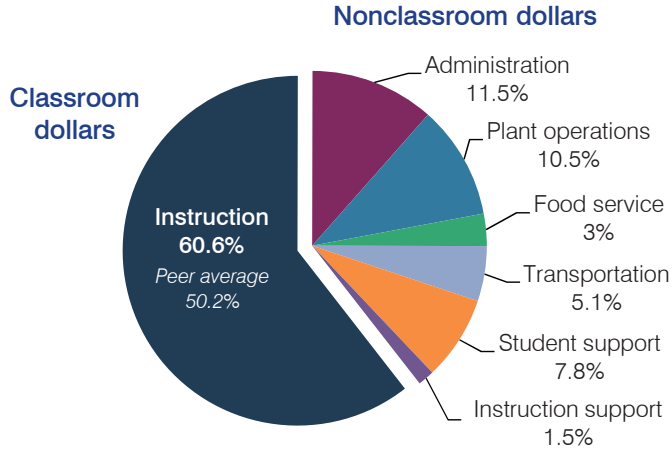
1,181

Number of schools:

1

OPERATIONAL EFFICIENCY

Spending by operational area



Efficiency measures relative to peer averages

Operational area	Measure	District	Peer average	State average
Administration	Cost per pupil	\$843	\$1,075	\$780
	Students per administrative position	72	58	67
Plant operations	Cost per square foot	\$4.56	\$4.90	\$6.09
	Square footage per student	168	258	153
Food service	Cost per meal equivalent	\$3.59	\$3.39	\$2.79
Transportation	Cost per mile	\$3.26	\$3.69	\$3.66
	Cost per rider	\$680	\$535	\$1,071

Very low Low Comparable High Very high

Per pupil spending

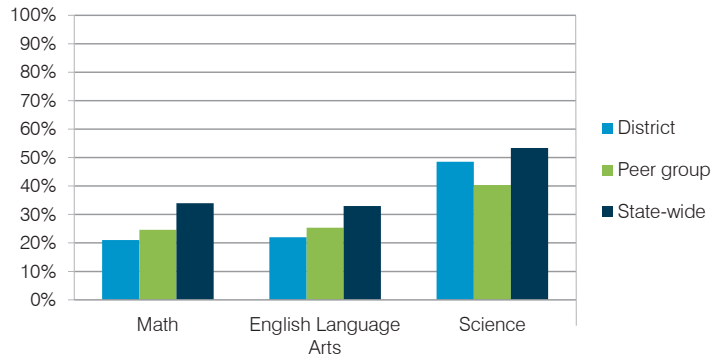
Spending by area	District		Peer average	State average
	2014	2015	2015	2015
Instruction	\$ 4,270	\$ 4,428	\$ 4,428	\$ 4,105
Administration	718	843	1,075	780
Plant operations	839	767	1,203	930
Food service	180	218	428	417
Transportation	372	374	498	371
Student support	587	574	623	613
Instruction support	139	107	353	442
Total operational	\$ 7,105	\$ 7,311	\$ 8,608	\$ 7,658
Land and buildings	\$ 52	\$ 124	\$ 504	\$ 641
Equipment	349	355	492	383
Interest	401	413	248	225
Other	41	84	57	150
Total nonoperational	\$ 843	\$ 976	\$ 1,301	\$ 1,399
Total per pupil spending	\$ 7,948	\$ 8,287	\$ 9,909	\$ 9,057

STUDENT AND TEACHER MEASURES, FINANCIAL ASSESSMENT, AND REVENUE

Student and teacher measures

Measure	District	Peer average	State average
Attendance rate	92%	92%	94%
Graduation rate (2014)	79%	84%	76%
Poverty rate (2014)	17%	19%	23%
Students per teacher	21.1	17.3	18.6
Average teacher salary	\$41,480	\$38,024	\$46,008
Average years of teacher experience	10.1	9.6	11.0
Percentage of teachers in first 3 years	29%	21%	20%

Students who met state standards



Financial stress assessment

Overall financial stress level: **High**

Measure: 2013 through 2015

Assessment

Change in number of district students	Steady
Spending exceeded operating/capital budgets	Capital only
Spending increase election results	Mixed election results
Operating reserve percentage (max. 4%), trend	0.8%, Decreasing
Years of capital reserve held	Less than 1 year
Current financial and internal control status	Compliant

Low Moderate High

Per pupil revenues

Revenues by source	District		Peer average	State average
	2014	2015	2015	2015
Federal	\$ 583	\$ 640	\$ 3,790	\$ 1,299
State	1,672	1,927	3,700	3,517
Local	6,411	6,378	4,105	4,248
Total revenues per pupil	\$ 8,666	\$ 8,945	\$11,595	\$ 9,064
Select revenues from common sources				
Equalization formula funding	\$ 5,309	\$ 5,180	\$ 5,693	\$ 5,303
Grants	808	832	1,675	1,167
Donations and tax credits	57	119	140	78
Select revenues from less common sources				
			Number of peers receiving	
Desegregation	\$ 0	\$ 0	1 of 29	
Small school adjustment	0	0	0 of 29	
Federal impact aid	0	0	15 of 29	
Voter-approved levy increases	1,606	1,656	19 of 29	

Mingus UHSD—page 2

Classroom dollar percentage

Year:	2001	2002	2003	2004	2005	2006	2007	2008	2009	2010	2011	2012	2013	2014	2015
Percentage:	59.8	62.0	59.4	58.6	58.1	61.3	62.4	58.5	62.6	55.1	55.0	58.0	59.6	60.1	60.6

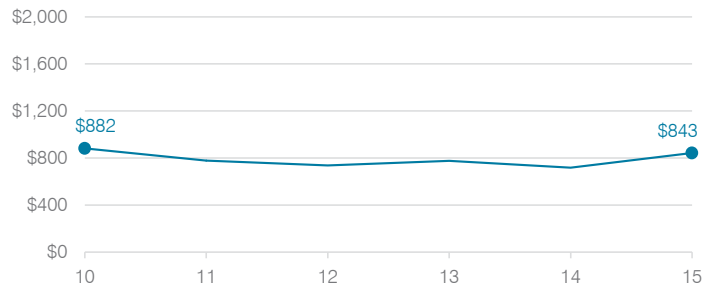
OPERATIONAL TRENDS

Fiscal years as indicated

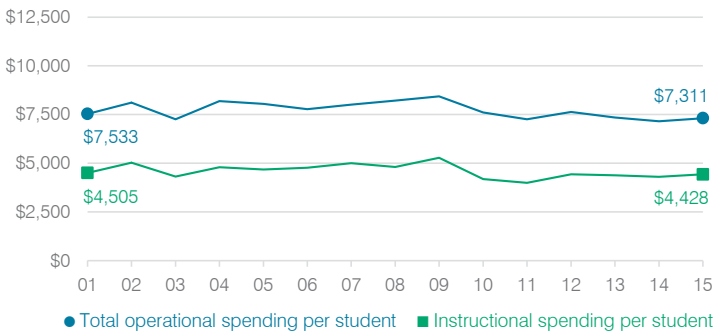
5-year spending trend (2010 through 2015)

Total operational spending per pupil, adjusted for inflation, decreased by 4 percent. The percentage of dollars spent in the classroom varied year to year, increasing overall from 55.1 to 60.6 percent. Overall, as a percentage of total operational spending, plant operations decreased substantially and administration, student support, and instruction support decreased, while food service increased substantially.

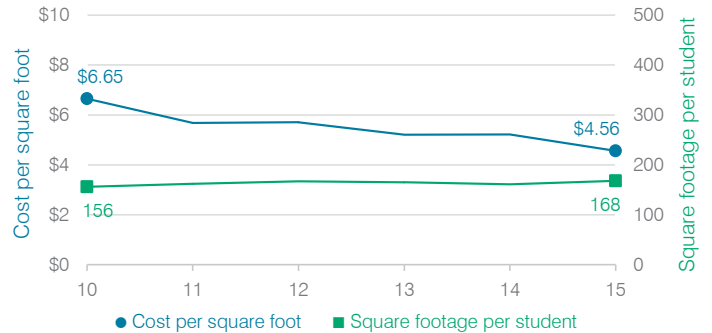
Administrative cost per student



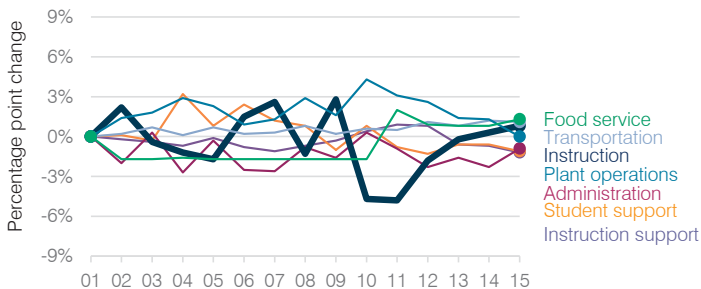
Total operational and instructional spending per student (inflation adjusted to 2015 dollars)



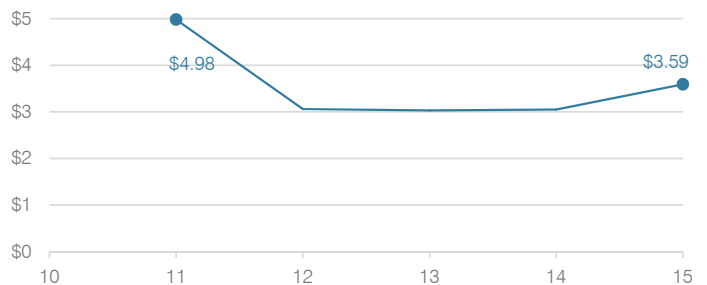
Plant cost per square foot and square footage per student



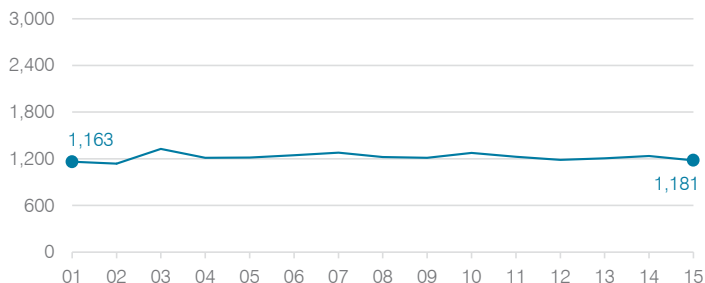
Changes in operational spending percentages



Food service cost per meal



Students attending



Transportation costs per mile and per rider

