

Classroom Dollars and Proposition 301 Results

Mohave Valley Elementary School District

Mohave County

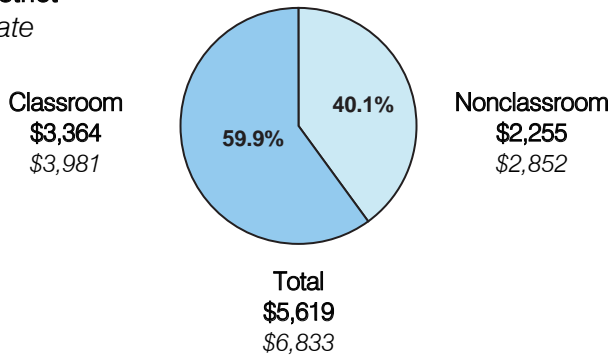
District size: Medium
 Students attending: 1,834
 Number of schools: 4
 Number of certified teachers: 91

Classroom Dollars

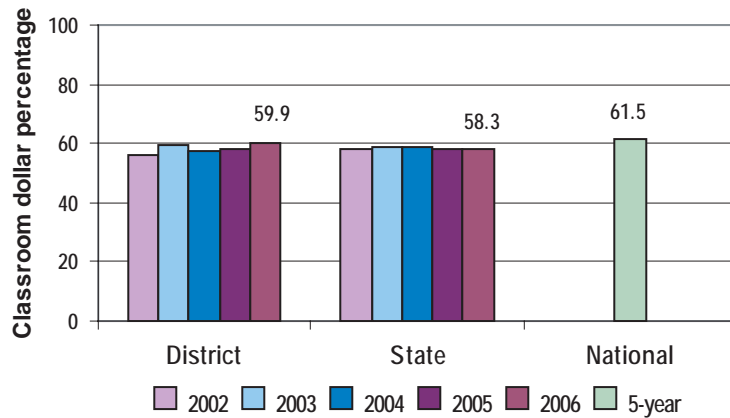
Fiscal year 2006 averages per pupil

District

State



5-year comparison



Expenditures by function

	District					State 2006	National 5-year
	2002	2003	2004	2005	2006		
Classroom dollars	55.9	59.5	57.2	58.0	59.9	58.3	61.5
Nonclassroom dollars:							
Administration	11.9	10.4	10.9	9.4	8.3	9.4	11.0
Plant operations	9.9	11.5	11.5	11.0	11.9	11.2	9.6
Food service	7.1	5.6	5.9	6.0	5.8	4.7	3.9
Transportation	7.3	5.9	5.3	5.1	4.6	4.2	4.0
Student support	3.7	3.3	3.9	5.2	5.0	7.2	5.1
Instruction support	4.2	3.8	5.3	5.3	4.5	4.8	4.7
Other						0.2	0.2

Comparative Information

	District			State
	2004	2005	2006	2006
Student/teacher ratio	21.8	20.4	20.2	17.7
Average teacher salary	\$34,855	\$36,158	\$43,846	\$42,967
Average years' experience	7.9	7.8	7.9	8.3

Classroom dollar ranking: 46 of 229 districts.

Proposition 301

District-reported 2006 results

Teacher pay

- On average, each teacher earned an additional \$7,324 in salary, and the speech pathologist and instructional facilitator each earned an additional \$4,800.

Performance

- The District accomplished its goals, which were similar to the prior fiscal year's goals and were based on district performance.
- Teachers earned performance pay based on the percentage of students who demonstrated 1 year's academic progress in reading, writing, and math.
- Teachers also participated in professional development activities.

Menu

- Monies were used solely to increase eligible employee compensation.