

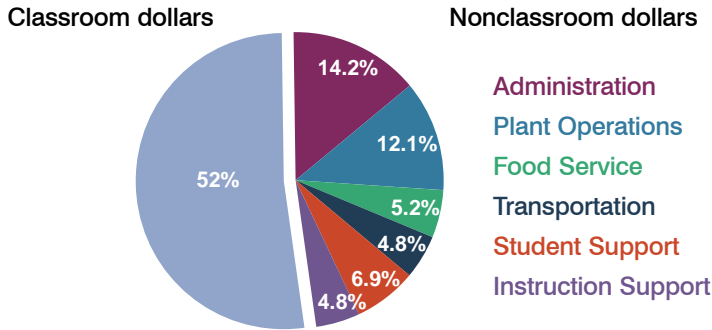
Mohave Valley Elementary School District

Mohave County
Peer groups: Efficiency 10, Achievement 4
Legislative district(s): 3

District size: Medium
Students attending: 1,680
Number of schools: 4

OPERATIONAL EFFICIENCY

Spending by function

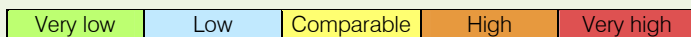


5-year trend

Total spending per pupil increased by 35 percent. Spending in the classroom varied year to year, decreasing significantly overall from 58 to 52 percent. Spending on administration increased significantly, while spending in other nonclassroom areas varied year to year.

District's cost measures relative to peer group

Operational Area	Measure	District	Peer Average	State Average
Administration	Cost per pupil	\$1,028	\$1,019	\$721
	Students per administrator	84	65	66
Plant Operations	Cost per square foot	\$6.65	\$6.70	\$6.25
	Square footage per student	131	130	146
Food Service	Cost per meal equivalent	\$1.94	\$2.42	\$2.41
Transportation	Cost per mile	\$2.39	\$3.03	\$3.35
	Miles per rider	223	196	282

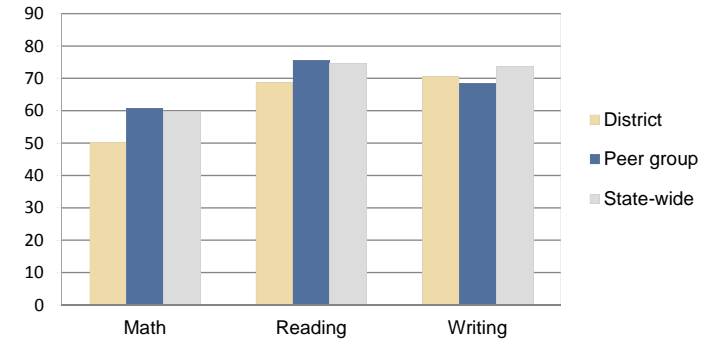


Per-pupil spending by function

	District		Peer 2010	State 2010	National 2008
	2009	2010			
Total	\$7,335	\$7,234	\$7,810	\$7,609	\$10,297
Classroom dollars	\$4,290	\$3,765	\$4,011	\$4,253	\$6,262
Nonclassroom dollars:	\$3,045	\$3,469	\$3,799	\$3,356	\$4,035
Administration	715	1,028	1,019	721	1,109
Plant Operations	794	871	916	914	1,003
Food Service	423	376	503	366	390
Transportation	309	350	432	342	438
Student Support	452	500	478	581	556
Instruction Support	352	344	451	432	539

STUDENT ACHIEVEMENT AND TEACHER INFORMATION

Percentage of students meeting state standards (AIMS)



Adequate Yearly Progress (AYP) toward federal goals

3 schools met all applicable AYP objectives for NCLB. 1 did not because some students did not demonstrate sufficient academic progress.

Student and teacher information

Measure	District	Peer Average	State Average
Attendance rate	94%	95%	94%
Graduation rate (2009)	N/A	N/A	76%
Poverty rate (2009)	21%	20%	21%
Student/teacher ratio	19.8	12.9	17.9
Average teacher salary	\$46,472	\$45,161	\$47,077
Average years' experience	9.8	13.5	10.6
Percent of teachers in first 3 years	12%	8%	20%

Proposition 301

Teacher and other staff pay

On average, each teacher earned \$4,334 in additional pay.

Performance pay plan goals and results

Type of goal	Goal met?
Student achievement	▴
Dropout/graduation rates	-
Student attendance	-
Parent/student satisfaction	-
Teacher attendance	■
Teacher professional development	■
Teacher evaluations	■
Tutoring	■
Other	-

■ = yes, □ = no, ▴ = partially, and - = no goal set