

# Mohave Valley Elementary School District

Mohave County  
Operational peer group: J  
Legislative districts: 3

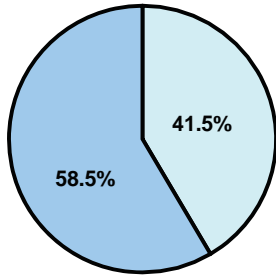
District size: Medium  
Students attending: 1,770  
Number of schools: 4

## OPERATIONAL EFFICIENCY

### Average per-pupil spending

District  
State

Classroom  
**\$4,290**  
\$4,497



Nonclassroom  
**\$3,045**  
\$3,411

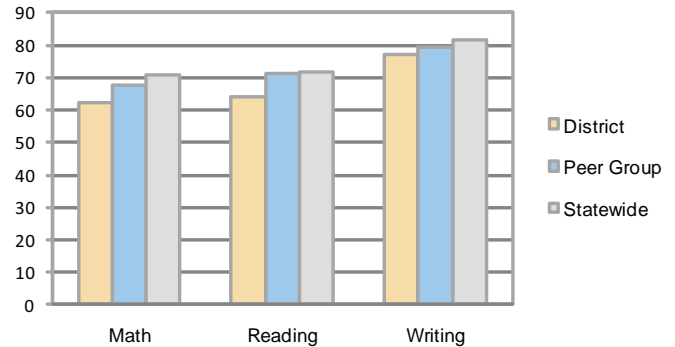
Total  
**\$7,335**  
\$7,908

### 5-year trend

Total spending per pupil increased by 39 percent. Spending in the classroom was fairly stable and increased overall from 57.2 to 58.5 percent. Spending on administration and transportation decreased, while spending in other nonclassroom areas remained fairly stable.

## STUDENT ACHIEVEMENT AND TEACHER INFORMATION

### Percentage of students meeting state standards (AIMS)



### Adequate Yearly Progress (AYP) toward federal goals

4 schools met all applicable AYP objectives for NCLB.

### District's cost measures relative to peer group

Operational Area	Measure	District	Peer Average	State Average
Administration	Cost per pupil	\$715	\$921	\$729
	Students per administrator	84	64	66
Plant Operations	Cost per square foot	\$6.32	\$6.71	\$6.40
	Square footage per student	126	125	144
Food Service	Cost per meal equivalent	\$2.19	\$2.56	\$2.53
Transportation	Cost per mile	\$2.82	\$3.04	\$3.36
	Miles per rider	174	145	271

Very Low   Low   Comparable   High   Very High

### Student and teacher information

Measure	District	Peer average	State average
Attendance rate	94%	95%	95%
Graduation rate (2008)	N/A	70%	75%
Poverty rate	18%	15%	19%
Student/teacher ratio	17.0	16.8	17.1
Average teacher salary	\$48,212	\$42,842	\$45,209
Average years' experience	8.6	10.1	8.3
Percent of teachers in first 3 years	24%	24%	16%

### Proposition 301

#### Teacher pay

On average, each teacher earned \$5,789 in additional salary.

#### Performance pay plan goals and results

Type of goal	Goal met?
Student achievement	▲
Dropout/ graduation rates	
Student attendance	
Parent/student satisfaction	
Teacher attendance	
Teacher professional development	
Teacher evaluations	▲
Tutoring	▲
Other	

■ = yes, □ = no, and ▲ = partially

### Per-pupil spending by function

	District		Peer	State	National
	2008	2009	2009	2009	2007
<b>Total</b>	<b>\$6,965</b>	<b>\$7,335</b>	<b>\$7,752</b>	<b>\$7,908</b>	<b>\$9,683</b>
<b>Classroom dollars</b>	<b>\$4,097</b>	<b>\$4,290</b>	<b>\$4,151</b>	<b>\$4,497</b>	<b>\$5,903</b>
<b>Nonclassroom dollars:</b>	<b>\$2,868</b>	<b>\$3,045</b>	<b>\$3,601</b>	<b>\$3,411</b>	<b>\$3,780</b>
Administration	644	715	921	729	1,050
Plant Operations	747	794	879	920	951
Food Service	424	423	524	382	369
Transportation	328	309	410	343	406
Student Support	406	452	483	594	512
Instruction Support	319	352	384	431	470
Other	0	0	0	12	22