

Classroom Dollars and Proposition 301 Results

Mohave Valley Elementary School District

Mohave County

District size: Medium
 Students attending: 1,876
 Number of schools: 4
 Number of certified teachers: 99

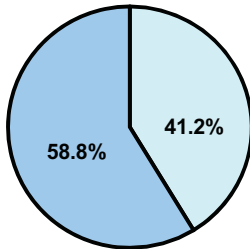
Classroom Dollars

Fiscal year 2008 averages per pupil

District

State

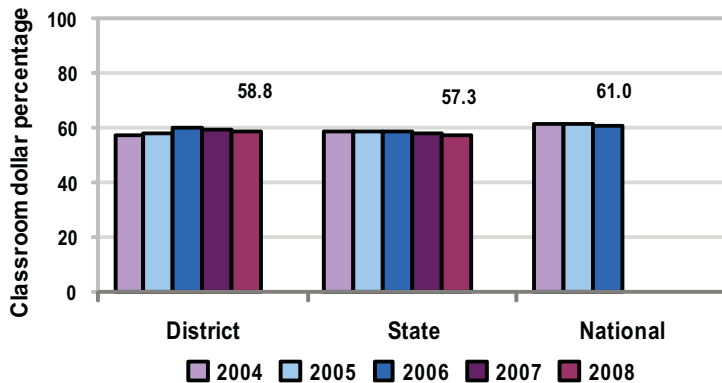
Classroom
 \$4,097
 \$4,480



Nonclassroom
 \$2,868
 \$3,333

Total
 \$6,965
 \$7,813

5-year comparison



Expenditures by function

	District					State 2008	National 2006
	2004	2005	2006	2007	2008		
Classroom dollars	57.2	58.0	59.9	59.3	58.8	57.3	61.0
Nonclassroom dollars:							
Administration	10.9	9.4	8.3	9.1	9.2	9.2	10.8
Plant operations	11.5	11.0	11.9	11.5	10.8	11.3	9.9
Food service	5.9	6.0	5.8	5.9	6.1	4.8	3.8
Transportation	5.3	5.1	4.6	4.5	4.7	4.4	4.2
Student support	3.9	5.2	5.0	5.0	5.8	7.4	5.2
Instruction support	5.3	5.3	4.5	4.7	4.6	5.4	4.9
Other						0.2	0.2

Comparative Information

	District			State 2008
	2006	2007	2008	
Student/teacher ratio	20.2	20.3	18.9	17.3
Average teacher salary	\$43,846	\$47,588	\$50,445	\$44,967
Average years' experience	7.9	9.1	7.9	8.1

Classroom dollar ranking: 51 of 230 districts.

Proposition 301

District-reported 2008 results

Teacher pay

- On average, each teacher earned \$7,256 in additional salary, which include performance pay for fiscal year 2007 performance.

Performance

- The District accomplished its goals, which were the same as the prior fiscal year's goals and were based on district performance.
- Teachers earned performance pay based on the percentage of students who maintained or improved scores on standardized tests.
- Teachers received satisfactory performance evaluations.
- Teachers could also earn additional monies by participating in professional development, leadership, tutoring, or extracurricular activities.

Menu

- Monies were used solely to increase eligible employee compensation.