

Classroom Dollars and Proposition 301 Results

Mohave Valley Elementary School District

Mohave County

District size: Medium
 Students attending: 1,745
 Number of schools: 4
 Number of certified teachers: 86

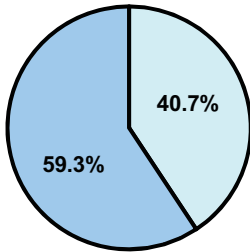
Classroom Dollars

Fiscal year 2007 averages per pupil

District

State

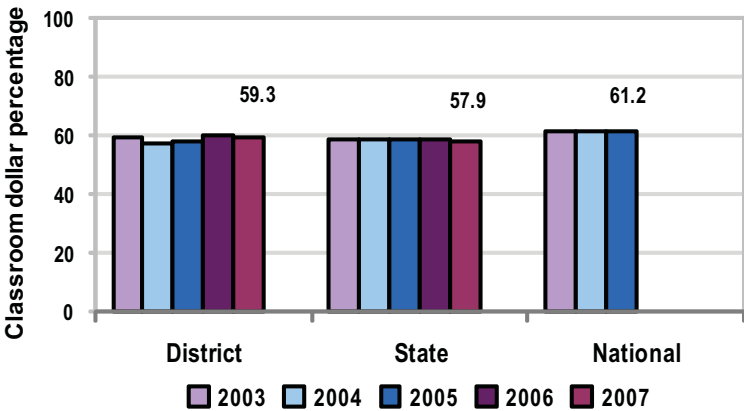
Classroom
\$3,812
\$4,277



Nonclassroom
\$2,621
\$3,105

Total
\$6,433
\$7,382

5-year comparison



Expenditures by function

	District					State 2007	National 2005
	2003	2004	2005	2006	2007		
Classroom dollars	59.5	57.2	58.0	59.9	59.3	57.9	61.2
Nonclassroom dollars:							
Administration	10.4	10.9	9.4	8.3	9.1	9.5	11.0
Plant operations	11.5	11.5	11.0	11.9	11.5	11.3	9.6
Food service	5.6	5.9	6.0	5.8	5.9	4.7	3.9
Transportation	5.9	5.3	5.1	4.6	4.5	4.3	4.1
Student support	3.3	3.9	5.2	5.0	5.0	7.3	5.2
Instruction support	3.8	5.3	5.3	4.5	4.7	4.8	4.8
Other						0.2	0.2

Comparative Information

	District			State
	2005	2006	2007	2007
Student/teacher ratio	20.4	20.2	20.3	17.4
Average teacher salary	\$36,158	\$43,846	\$47,588	\$43,833
Average years' experience	7.8	7.9	9.1	8.1

Classroom dollar ranking: 51 of 229 districts.

Proposition 301

District-reported 2007 results

Teacher pay

- On average, each teacher earned \$5,865 in additional salary, the instructional technician earned an additional \$6,300, and the speech pathologist earned an additional \$3,300.

Performance

- The District accomplished its goals, which were the same as the prior fiscal year's goals and were based on district performance.
- Teachers earned performance pay based on the percentage of students who demonstrated 1 year's academic progress in reading, writing, and math.
- Teachers received satisfactory performance evaluations.

Menu

- Monies were used solely to increase eligible employee compensation.