

Mohawk Valley Elementary School District

Yuma County

District size, location:

Very small, Rural

Efficiency peer groups 11 and T-11, Achievement peer group 18¹

Students attending:

158

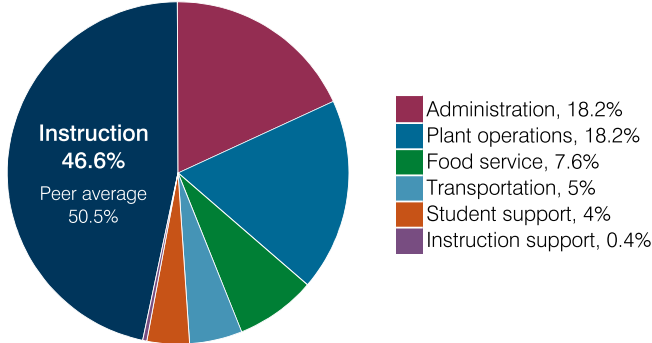
Legislative district(s): 4 and 13

Number of schools:

1

OPERATIONAL EFFICIENCY

Spending by operational area



Efficiency measures relative to peer averages

Operational area	Measure	District	Peer average	State average
Administration	Cost per pupil	\$2,012	\$3,064	\$860
	Students per administrative position	53	33	66
Plant operations	Cost per square foot	\$6.63	\$7.31	\$6.34
	Square footage per student	303	371	156
Food service	Cost per meal	\$3.83	\$5.79	\$3.02
Transportation	Cost per mile	\$2.34	\$1.94	\$4.05
	Cost per rider	\$3,219	\$1,614	\$1,301

Per pupil spending

Spending by area	District		Peer average 2018	State average 2018
	2017	2018		
Instruction	\$ 4,720	\$ 5,149	\$ 8,493	\$ 4,480
Administration	1,776	2,012	3,064	860
Plant operations	1,846	2,010	2,439	988
Food service	718	837	932	425
Transportation	569	553	973	388
Student support	116	440	656	693
Instruction support	48	42	400	462
Total operational	9,793	11,043	16,957	8,296
Land and buildings	1,075	948	965	827
Equipment	582	780	562	409
Interest	95	2	25	228
Other	0	16	88	169
Total nonoperational	1,752	1,746	1,640	1,633
Total per pupil spending	\$ 11,545	\$ 12,789	\$ 18,597	\$ 9,929

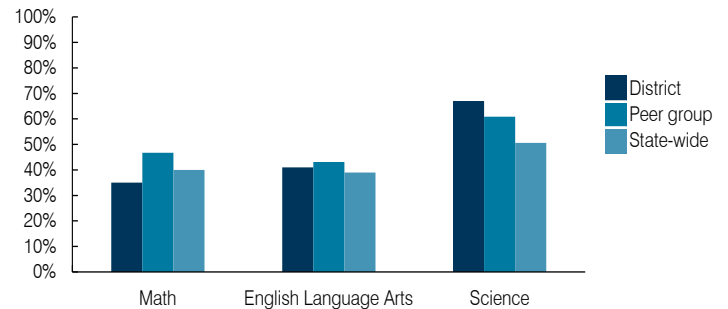
¹ See Appendix A for information such as districts included in each peer group and Appendix B for sources and methodology.

STUDENT ACHIEVEMENT, STUDENT AND TEACHER MEASURES, AND REVENUES

ADE-assigned school letter grades

Grade	Number of schools	Percentage of schools
A	0	0%
B	1	100%
C	0	0%
D	0	0%
F	0	0%

Students who passed State assessments



Student and teacher measures

Measure	District	Peer average	State average
Attendance rate	95%	94%	94%
Graduation rate (2017)	N/A	N/A	N/A
Poverty rate (2017)	26%	25%	19%
Special education population	20%	17%	12%
Students per teacher	18.6	12.6	18.4
Average teacher salary	\$49,650	\$47,486	\$48,951
Amount from Prop 301	\$8,623	\$4,484	\$6,411
Average years of teacher experience	17.1	14.9	11.4
Percentage of teachers in first 3 years	11%	7%	19%

Per pupil revenues

Revenues by source	District		Peer average 2018	State average 2018
	2017	2018		
Federal	\$ 1,577	\$ 1,731	\$ 3,021	\$ 1,317
State	6,813	5,818	4,788	4,011
Local	3,186	3,320	12,812	4,592
Total per pupil revenues	\$ 11,576	\$ 10,869	\$ 20,621	\$ 9,920

Select revenues from common sources

Source	District	Peer average	State average
Equalization formula funding	\$ 7,522	\$ 7,422	\$ 8,282
Grants	2,259	1,923	3,020
Donations and tax credits	47	44	125

Select revenues from less common sources

Source	District	Peer average	Number of peers receiving
Desegregation	\$ 0	\$ 0	0 of 56
Small school adjustment	0	0	45 of 56
Federal impact aid	0	0	5 of 56
Voter-approved levy increases	43	4	5 of 56

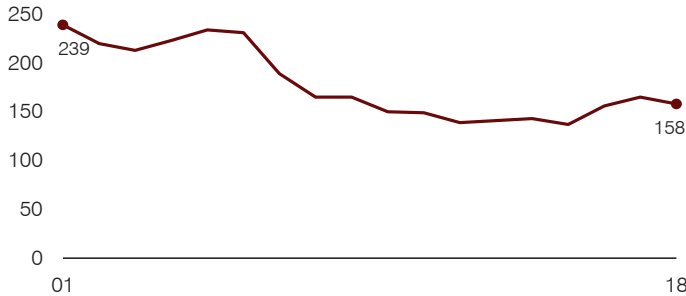
Instructional spending percentage

Year: 2001 2002 2003 2004 2005 2006 2007 2008 2009 2010 2011 2012 2013 2014 2015 2016 2017 2018
 Percentage: 56.1 52.4 52.9 54.0 53.6 54.5 45.6 52.4 49.5 46.5 45.1 42.3 42.9 41.1 43.3 45.6 48.2 46.6

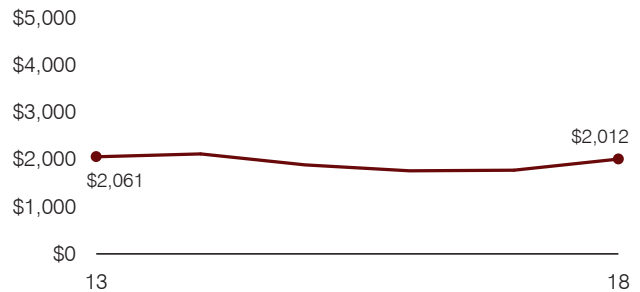
TRENDS AND FINANCIAL STRESS ASSESSMENT

Fiscal years as indicated

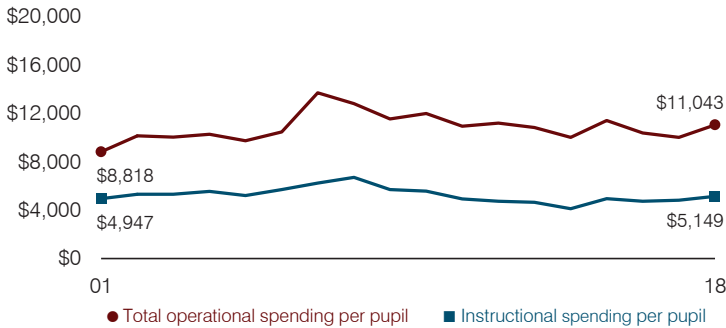
Students attending



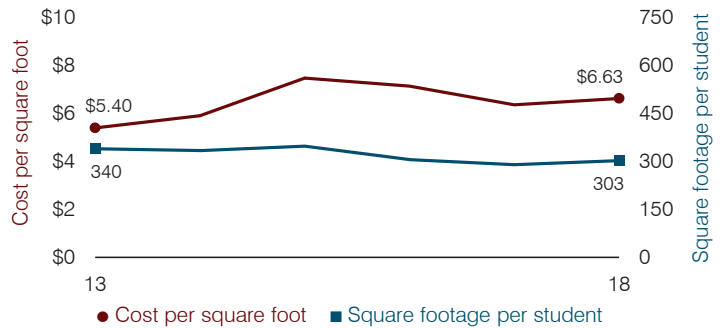
Administrative cost per pupil



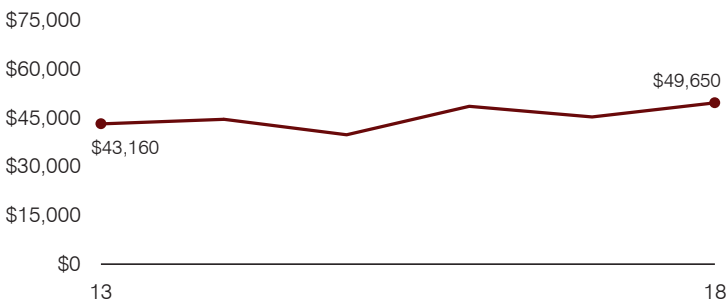
Total operational and instructional spending per pupil (inflation adjusted to 2018 dollars)



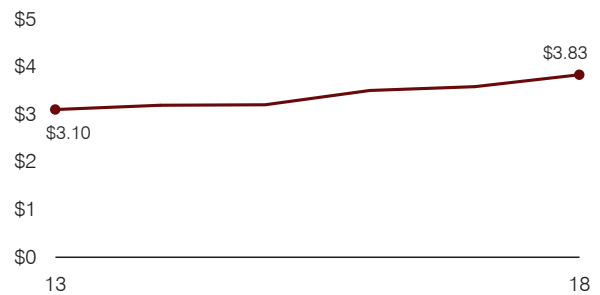
Plant cost per square foot and square footage per student



Average teacher salary



Food service cost per meal



Financial stress assessment

Overall financial stress level: **Low**

Measure: 2016 through 2018	Assessment
Change in number of district students	Steady
Spending exceeded operating/capital budgets	Isolated
Spending increase election results	No election held
Operating reserve percentage, Trend	3.8%, Decreasing
Years of capital reserve held	1 to 3 years
Current financial and internal control status	Compliant

Low Moderate High

Transportation costs per mile and per rider

