

Mohawk Valley Elementary School District

Yuma County

Efficiency peer groups 11 and T-13, Achievement peer group 21

Legislative district(s): 4 and 13

District size / location:

Very small, Rural

Students attending:

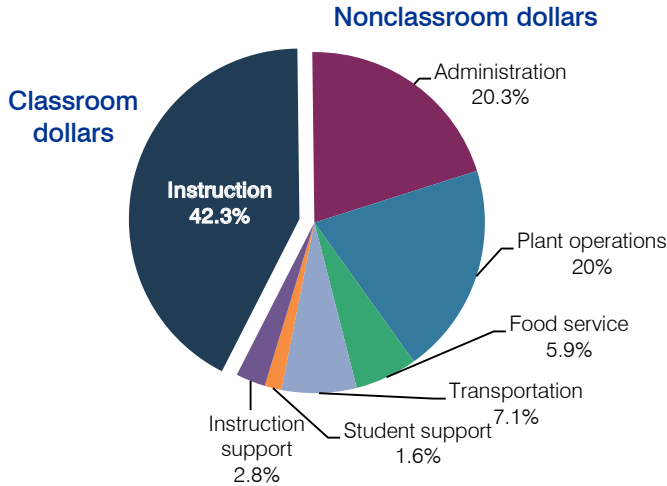
139

Number of schools:

1

OPERATIONAL EFFICIENCY

Spending by operational area



5-year spending trend

Total spending per pupil decreased by 9 percent. Spending in the classroom varied year to year, decreasing overall from 45.6 to 42.3 percent. Spending on most nonclassroom areas also varied year to year, as is common for very small districts. Overall, spending on administration decreased and spending on plant operations and transportation increased.

Cost measures relative to peer averages

Operational area	Measure	District	Peer average	State average
Administration	Cost per pupil	\$2,082	\$2,472	\$736
	Students per administrator	69	30	66
Plant operations	Cost per square foot	\$5.93	\$6.93	\$6.09
	Square footage per student	345	320	152
Food service	Cost per meal equivalent	\$3.01	\$4.88	\$2.47
Transportation	Cost per mile	\$2.54	\$1.53	\$3.50
	Cost per rider	\$994	\$1,171	\$982

Per-pupil spending by operational area

	District		Peer average	State average	National average
	2011	2012	2012	2012	2010
Total	\$9,745	\$10,261	\$15,082	\$7,475	\$10,652
Classroom dollars	4,397	4,345	7,880	4,053	6,526
Nonclassroom dollars:	5,348	5,916	7,202	3,422	4,126
Administration	2,082	2,082	2,472	736	1,139
Plant operations	1,726	2,048	2,126	928	1,012
Food service	581	600	756	382	405
Transportation	589	733	970	362	443
Student support	60	164	541	578	592
Instruction support	310	289	337	436	535

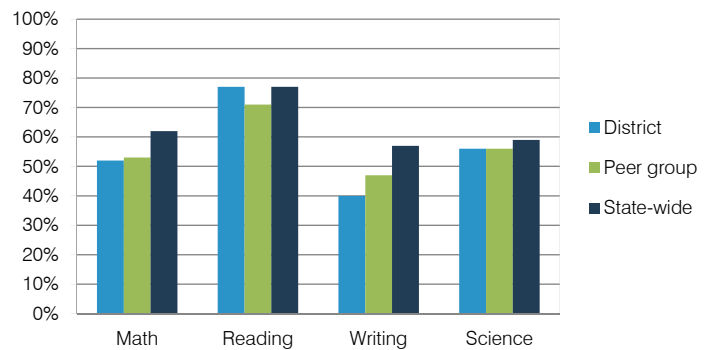
STUDENT ACHIEVEMENT, TEACHER MEASURES, AND FINANCIAL ASSESSMENT

ADE-reported district and school letter grades

District grade: **C**

Grade	Number of schools	Percentage of schools
A	0	0%
B	0	0%
C	1	100%
D	0	0%
F	0	0%
Not rated	0	0%

Percentage of students who met state standards (AIMS)



Student and teacher measures

Measure	District	Peer average	State average
Attendance rate	95%	95%	94%
Graduation rate (2011)	N/A	N/A	N/A
Poverty rate (2011)	38%	39%	25%
Students per teacher	15.4	14.4	18.1
Average teacher salary	\$40,746	\$40,820	\$45,193
Amount from Proposition 301	\$1,970	\$2,313	\$3,195
Average years of teacher experience	23.5	11.7	11.0
Percentage of teachers in first 3 years	7%	12%	16%

Financial stress assessment

Overall financial stress level: **Moderate**

Measure: 2010 through 2012	Assessment
Number of students attending	Moderate decrease
Spending exceeded operating/capital budgets	No overspending
Spending increase election results	Voter-rejected
Operating reserve percentage (max. 4%), trend	1.7%, Decreasing
Years of capital reserve held	1 to 3 years
Current financial and internal control status	Compliant

