

Mohawk Valley Elementary School District

Yuma County
Operational peer group: L
Legislative districts: 24

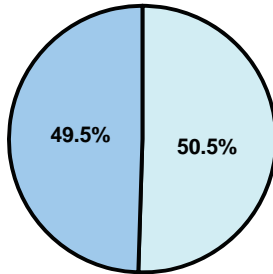
District size: Very Small
Students attending: 165
Number of schools: 1

OPERATIONAL EFFICIENCY

Average per-pupil spending

District
State

Classroom
\$4,931
\$4,497



Nonclassroom
\$5,039
\$3,411

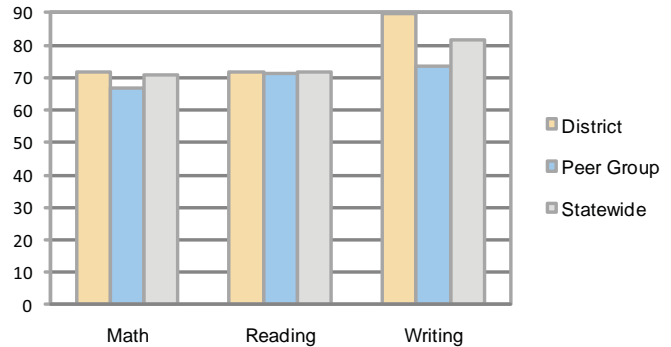
Total
\$9,970
\$7,908

5-year trend

Total spending per pupil increased by 29 percent. Spending in the classroom was very inconsistent year to year and decreased significantly overall from 54 to 49.5 percent. Spending on administration and plant operations increased significantly, while spending in other nonclassroom areas varied from year to year.

STUDENT ACHIEVEMENT AND TEACHER INFORMATION

Percentage of students meeting state standards (AIMS)



Adequate Yearly Progress (AYP) toward federal goals

The District's school met all applicable AYP objectives for NCLB.

Student and teacher information

Measure	District	Peer average	State average
Attendance rate	96%	94%	95%
Graduation rate (2008)	N/A	54%	75%
Poverty rate	30%	31%	19%
Student/teacher ratio	13.8	10.8	17.1
Average teacher salary	\$45,390	\$45,165	\$45,209
Average years' experience	19.9	12.7	8.3
Percent of teachers in first 3 years	17%	15%	16%

District's cost measures relative to peer group

Operational Area	Measure	District	Peer Average	State Average
Administration	Cost per pupil	\$2,063	\$2,656	\$729
	Students per administrator	33	32	66
Plant Operations	Cost per square foot	\$5.08	\$7.53	\$6.40
	Square footage per student	290	318	144
Food Service	Cost per meal equivalent	\$2.36	\$5.10	\$2.53
Transportation	Cost per mile	\$1.85	\$1.79	\$3.36
	Miles per rider	352	710	271

Very Low Low Comparable High Very High

Per-pupil spending by function

	District		Peer	State	National
	2008	2009	2009	2009	2007
Total	\$10,917	\$9,970	\$16,311	\$7,908	\$9,683
Classroom dollars	\$5,722	\$4,931	\$8,757	\$4,497	\$5,903
Nonclassroom dollars:	\$5,195	\$5,039	\$7,554	\$3,411	\$3,780
Administration	1,925	2,063	2,656	729	1,050
Plant Operations	1,594	1,472	2,297	920	951
Food Service	675	543	859	382	369
Transportation	659	562	930	343	406
Student Support	142	138	474	594	512
Instruction Support	200	261	338	431	470
Other	0	0	0	12	22

Proposition 301

Teacher pay

On average, each teacher earned \$3,723 in additional salary.

Performance pay plan goals and results

Type of goal	Goal met?
Student achievement	■
Dropout/ graduation rates	
Student attendance	
Parent/student satisfaction	
Teacher attendance	
Teacher professional development	
Teacher evaluations	
Tutoring	
Other	

■ = yes, □ = no, and ▴ = partially