

# Classroom Dollars and Proposition 301 Results

## Mohawk Valley Elementary School District

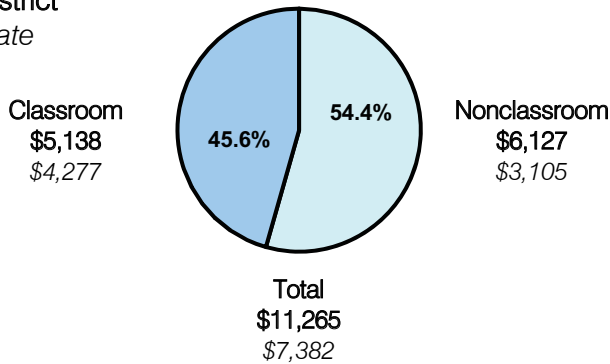
Yuma County

District size: Very Small  
 Students attending: 189  
 Number of schools: 1  
 Number of certified teachers: 14

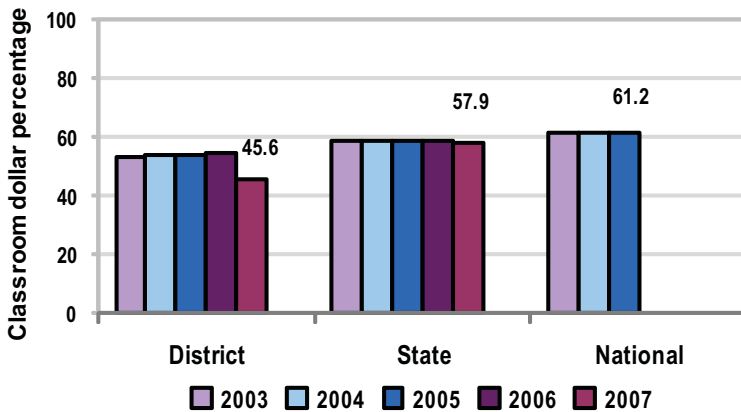
### Classroom Dollars

Fiscal year 2007 averages per pupil

District  
 State



5-year comparison



Expenditures by function

	Percentage					State 2007	National 2005
	District						
	2003	2004	2005	2006	2007		
Classroom dollars	52.9	54.0	53.6	54.5	45.6	57.9	61.2
Nonclassroom dollars:							
Administration	17.9	14.8	15.3	14.7	29.2	9.5	11.0
Plant operations	13.1	12.4	12.0	10.7	11.7	11.3	9.6
Food service	7.4	7.9	8.2	7.5	5.6	4.7	3.9
Transportation	3.9	5.6	7.2	8.4	4.9	4.3	4.1
Student support	2.1	3.1	1.8	2.1	1.1	7.3	5.2
Instruction support	2.7	2.2	1.9	2.1	1.9	4.8	4.8
Other						0.2	0.2

### Comparative Information

	District			State 2007
	2005	2006	2007	
Student/teacher ratio	16.7	14.4	13.5	17.4
Average teacher salary	\$36,874	\$40,395	\$41,873	\$43,833
Average years' experience	11.7	9.4	13.3	8.1

Classroom dollar ranking: 197 of 229 districts.

### Proposition 301

#### District-reported 2007 results

##### Teacher pay

- On average, each teacher earned an additional \$4,218 in salary, and the instructional aide earned an additional \$3,262. These amounts include performance pay for fiscal year 2006 performance.

##### Performance

- The District accomplished its goals, which were similar to the prior fiscal year's goals and were based on school and individual performance.
- Teachers earned \$10 for each student scoring between the 54th- and 64th-percentile on standardized tests, and \$20 for each student scoring at or above the 65th-percentile.
- Teachers also earned performance pay because the District's school made Adequate Yearly Progress and was labeled as "Highly Performing" by ADE for AZ LEARNS.

##### Menu

- The District continued to pay 1 additional teacher to reduce class sizes and afford more opportunities to address individual learning needs.