

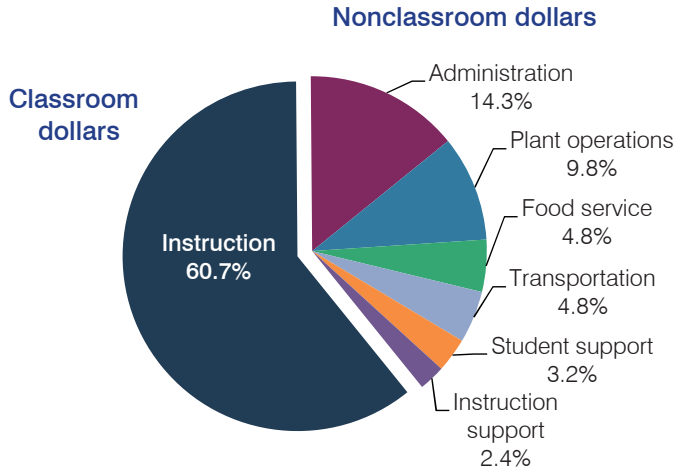
# Morenci Unified School District

Greenlee County  
 Efficiency peer groups 5 and T-7, Achievement peer group 4  
 Legislative district(s): 14

District size, location: Medium, Town  
 Students attending: 1,278  
 Number of schools: 3

## OPERATIONAL EFFICIENCY

### Spending by operational area



### 5-year spending trend (2009 through 2014)

Total spending per pupil increased by 25 percent. Spending in the classroom increased overall from 55.7 to 60.7 percent. Overall, spending on plant operations decreased substantially, while spending on transportation and instruction support increased. Spending on some other nonclassroom areas remained fairly stable.

### Cost measures relative to peer averages

Operational area	Measure	District	Peer average	State average
Administration	Cost per pupil	\$1,119	\$1,016	\$757
	Students per administrator	64	54	68
Plant operations	Cost per square foot	\$3.00	\$4.71	\$6.04
	Square footage per student	257	261	153
Food service	Cost per meal equivalent	\$4.33	\$3.28	\$2.69
Transportation	Cost per mile	\$3.83	\$3.45	\$3.62
	Cost per rider	\$967	\$832	\$1,036

Very low   Low   Comparable   High   Very high

### Per pupil spending by operational area

	District		Peer average	State average	National average
	2013	2014	2014	2014	2012
<b>Total</b>	<b>\$7,413</b>	<b>\$7,838</b>	<b>\$8,082</b>	<b>\$7,578</b>	<b>\$10,667</b>
<b>Classroom dollars</b>	<b>4,410</b>	<b>4,757</b>	<b>4,193</b>	<b>4,073</b>	<b>6,495</b>
<b>Nonclassroom dollars:</b>	<b>3,003</b>	<b>3,081</b>	<b>3,889</b>	<b>3,505</b>	<b>4,172</b>
Administration	1,188	1,119	1,016	757	1,160
Plant operations	764	771	1,145	923	1,008
Food service	328	375	389	405	429
Transportation	391	373	477	373	464
Student support	268	254	563	600	594
Instruction support	64	189	299	447	517

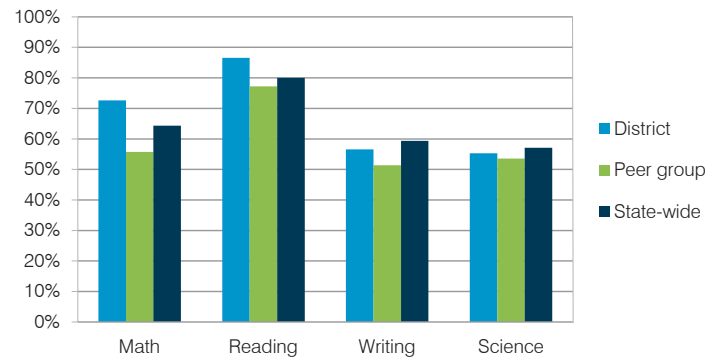
## STUDENT ACHIEVEMENT, TEACHER MEASURES, AND FINANCIAL ASSESSMENT

### ADE-reported district and school letter grades

District grade: **A**

Grade	Number of schools	Percentage of schools
A	1	33%
B	2	67%
C	0	0%
D	0	0%
F	0	0%
Not rated	0	0%

### Students who met state standards (AIMS)



### Student and teacher measures

Measure	District	Peer average	State average
Attendance rate	93%	94%	95%
Graduation rate (2013)	91%	86%	75%
Poverty rate (2013)	10%	15%	24%
Students per teacher	19.7	16.1	18.6
Average teacher salary	\$52,238	\$41,932	\$46,026
Amount from Proposition 301	\$4,457	\$4,526	\$4,810
Average years of teacher experience	11.8	10.2	10.9
Percentage of teachers in first 3 years	7%	21%	20%

### Financial stress assessment

Overall financial stress level: **Moderate**

Measure: 2012 through 2014

Measure	Assessment
Change in number of district students	Increase
Spending exceeded operating/capital budgets	No overspending
Spending increase election results	No election held
Operating reserve percentage (max. 4%), trend	1.5%, Decreasing
Years of capital reserve held	1 to 3 years
Current financial and internal control status	Compliant

Stress level

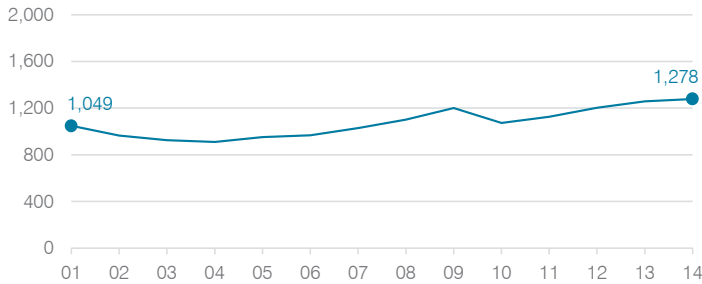


# Morenci Unified School District

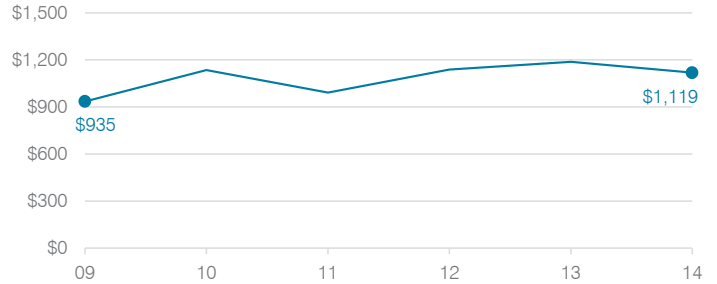
Classroom dollar percentage: 2001 2002 2003 2004 2005 2006 2007 2008 2009 2010 2011 2012 2013 2014  
 54.9 57.9 58.0 56.8 58.3 56.3 56.9 56.5 58.3 57.2 57.7 57.0 59.5 60.7

## OPERATIONAL TRENDS Fiscal years as indicated

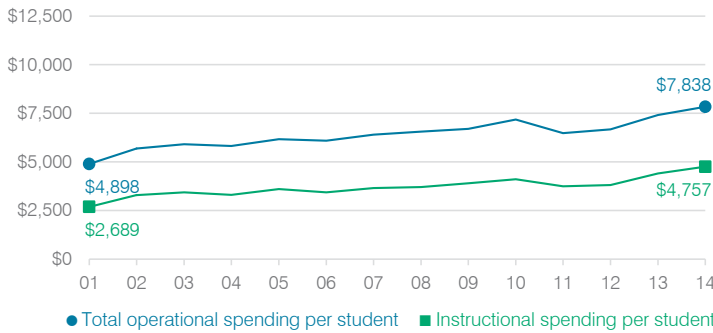
### Students attending



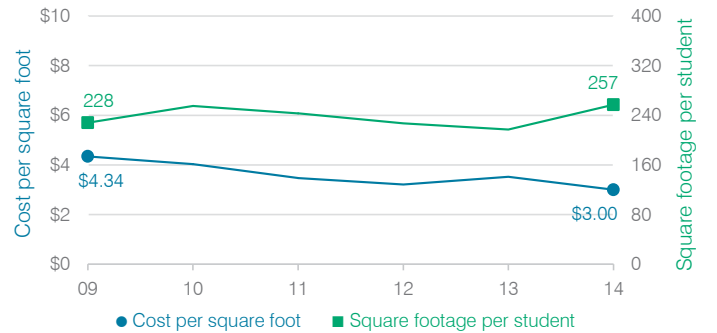
### Administrative cost per student



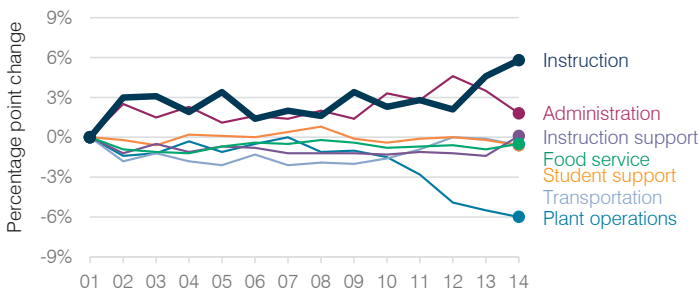
### Total operational and instructional spending per student



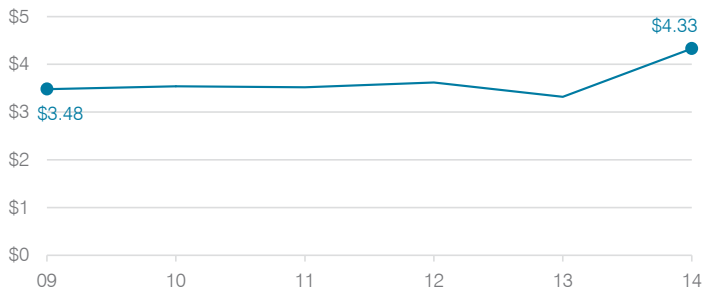
### Plant cost per square foot and square footage per student



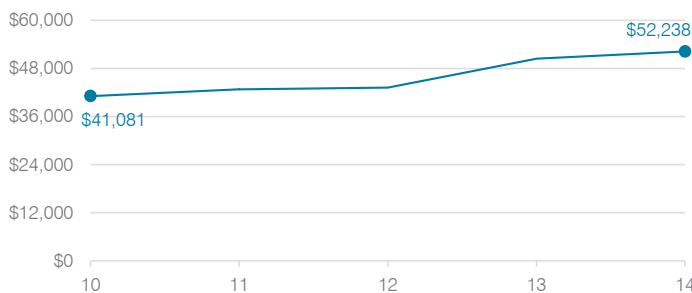
### Changes in operational spending percentages



### Food service cost per meal



### Average teacher salary



### Transportation costs per mile and per rider

