

Morenci Unified School District

Greenlee County
Operational peer group: E
Legislative districts: 5

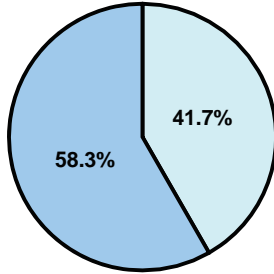
District size: Medium
Students attending: 1,200
Number of schools: 2

OPERATIONAL EFFICIENCY

Average per-pupil spending

District
State

Classroom
\$3,908
\$4,497



Nonclassroom
\$2,796
\$3,411

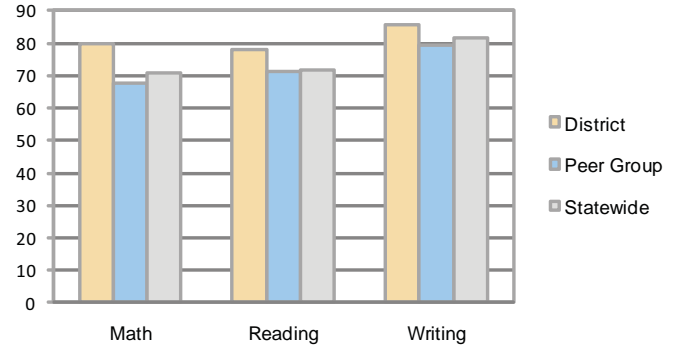
Total
\$6,704
\$7,908

5-year trend

Total spending per pupil increased by 15 percent. Spending in the classroom varied from year to year and increased overall from 56.8 to 58.3 percent. Spending on administration and plant operations decreased, while spending in other nonclassroom areas remained fairly stable.

STUDENT ACHIEVEMENT AND TEACHER INFORMATION

Percentage of students meeting state standards (AIMS)



Adequate Yearly Progress (AYP) toward federal goals

2 schools met all applicable AYP objectives for NCLB.

District's cost measures relative to peer group

Operational Area	Measure	District	Peer Average	State Average
Administration	Cost per pupil	\$935	\$1,148	\$729
	Students per administrator	71	51	66
Plant Operations	Cost per square foot	\$4.34	\$5.49	\$6.40
	Square footage per student	228	253	144
Food Service	Cost per meal equivalent	\$3.48	\$3.07	\$2.53
Transportation	Cost per mile	\$3.15	\$2.53	\$3.36
	Miles per rider	115	359	271

Very Low Low Comparable High Very High

Student and teacher information

Measure	District	Peer average	State average
Attendance rate	96%	95%	95%
Graduation rate (2008)	82%	70%	75%
Poverty rate	5%	15%	19%
Student/teacher ratio	19.7	16.8	17.1
Average teacher salary	\$41,505	\$42,842	\$45,209
Average years' experience	10.7	10.1	8.3
Percent of teachers in first 3 years	6%	24%	16%

Proposition 301

Teacher pay

On average, each teacher and the speech pathologist earned between \$5,189 and \$5,323 in additional salary.

Performance pay plan goals and results

Type of goal	Goal met?
Student achievement	■
Dropout/ graduation rates	■
Student attendance	■
Parent/student satisfaction	■
Teacher attendance	■
Teacher professional development	▴
Teacher evaluations	▴
Tutoring	■
Other	■

■ = yes, □ = no, and ▴ = partially

Per-pupil spending by function

	District		Peer	State	National
	2008	2009	2009	2009	2007
Total	\$6,559	\$6,704	\$9,562	\$7,908	\$9,683
Classroom dollars	\$3,706	\$3,908	\$4,925	\$4,497	\$5,903
Nonclassroom dollars:	\$2,853	\$2,796	\$4,637	\$3,411	\$3,780
Administration	953	935	1,148	729	1,050
Plant Operations	963	990	1,379	920	951
Food Service	334	326	444	382	369
Transportation	232	225	554	343	406
Student Support	301	248	749	594	512
Instruction Support	66	70	356	431	470
Other	4	2	7	12	22