

Classroom Dollars and Proposition 301 Results

Morenci Unified School District

Greenlee County

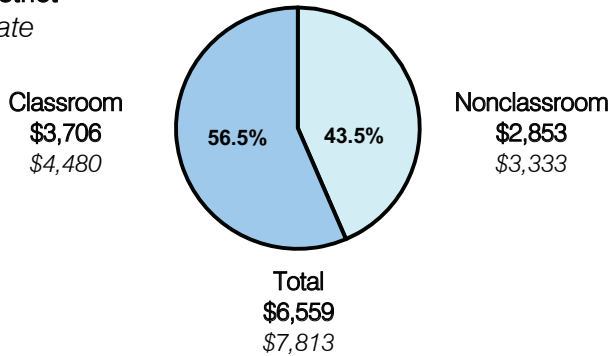
District size: Medium
 Students attending: 1,102
 Number of schools: 2
 Number of certified teachers: 61

Classroom Dollars

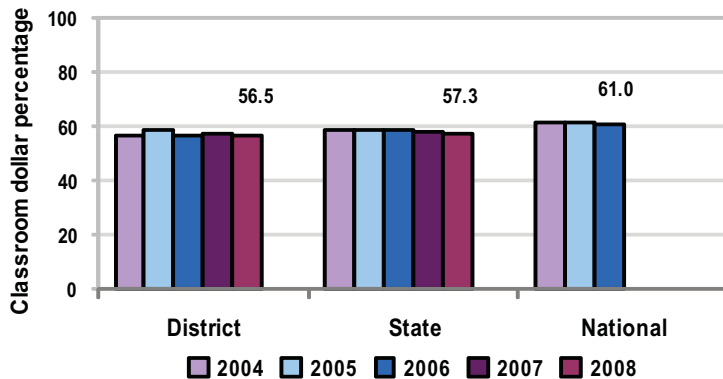
Fiscal year 2008 averages per pupil

District

State



5-year comparison



Expenditures by function

	District					State 2008	National 2006
	2004	2005	2006	2007	2008		
Classroom dollars	56.8	58.3	56.3	56.9	56.5	57.3	61.0
Nonclassroom dollars:							
Administration	14.8	13.6	14.1	13.9	14.5	9.2	10.8
Plant operations	15.5	14.7	15.3	15.8	14.7	11.3	9.9
Food service	4.1	4.6	4.9	4.8	5.1	4.8	3.8
Transportation	3.6	3.3	4.1	3.3	3.5	4.4	4.2
Student support	4.0	3.9	3.8	4.2	4.6	7.4	5.2
Instruction support	1.2	1.6	1.5	1.0	1.0	5.4	4.9
Other				0.1	0.1	0.2	0.2

Comparative Information

	District			State
	2006	2007	2008	2008
Student/teacher ratio	17.4	17.4	17.7	17.3
Average teacher salary	\$37,460	\$38,103	\$38,293	\$44,967
Average years' experience	9.4	9.2	9.2	8.1

Classroom dollar ranking: 91 of 230 districts.

Proposition 301

District-reported 2008 results

Teacher pay

- On average, each teacher and the speech pathologist earned an additional \$5,700 in salary.

Performance

- The District accomplished its goals, which were similar to the prior fiscal year's goals and were based on district, school, and individual performance.
- The elementary school was labeled as "Highly Performing" by ADE for AZ LEARNS, and the high school was labeled as "Performing" or better for the third year in a row. Both schools met Adequate Yearly Progress objectives.
- Students scored at or above the state averages on standardized tests.
- The student attendance rate and the graduation rate both met or exceeded state averages.
- Parents and students responding to a quality of education survey rated the District as satisfactory or better.
- Teachers attended 8 hours of professional development activities and received satisfactory performance evaluations.

Menu

- Monies were used solely to increase eligible employee compensation.