

Classroom Dollars and Proposition 301 Results

Morenci Unified School District

Greenlee County

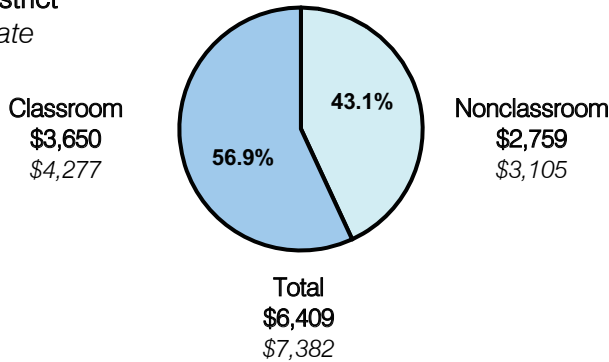
District size: Medium
 Students attending: 1,028
 Number of schools: 2
 Number of certified teachers: 59

Classroom Dollars

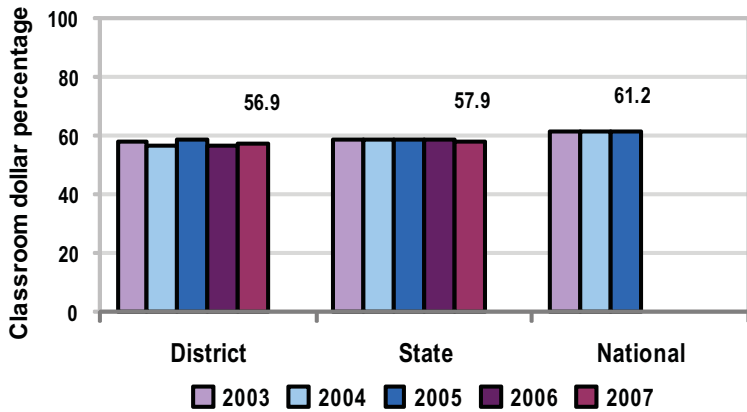
Fiscal year 2007 averages per pupil

District

State



5-year comparison



Expenditures by function

	District					State 2007	National 2005
	2003	2004	2005	2006	2007		
Classroom dollars	58.0	56.8	58.3	56.3	56.9	57.9	61.2
Nonclassroom dollars:							
Administration	14.0	14.8	13.6	14.1	13.9	9.5	11.0
Plant operations	14.6	15.5	14.7	15.3	15.8	11.3	9.6
Food service	4.2	4.1	4.6	4.9	4.8	4.7	3.9
Transportation	4.2	3.6	3.3	4.1	3.3	4.3	4.1
Student support	3.2	4.0	3.9	3.8	4.2	7.3	5.2
Instruction support	1.8	1.2	1.6	1.5	1.0	4.8	4.8
Other					0.1	0.2	0.2

Comparative Information

	District			State 2007
	2005	2006	2007	
Student/teacher ratio	17.7	17.4	17.4	17.4
Average teacher salary	\$36,015	\$37,460	\$38,103	\$43,833
Average years' experience	9.5	9.4	9.2	8.1

Classroom dollar ranking: 79 of 229 districts.

Proposition 301

District-reported 2007 results

Teacher pay

- On average, each teacher and the speech pathologist earned an additional \$5,100 in salary.

Performance

- The District accomplished its goals, which were similar to the prior fiscal year's goals and were based on district, school, and individual performance.
- The elementary school was labeled as "Excelling" for two consecutive years by ADE for AZ LEARNS, and the high school was labeled as "Performing" or better for the second year in a row.
- The schools demonstrated Adequate Yearly Progress, and students scored at or above the state averages on standardized tests.
- The student attendance rate and the graduation rate both met or exceeded state averages.
- Parents and students responding to a survey rated the District as satisfactory or better.
- Teachers attended 8 hours of professional development activities and received satisfactory performance evaluations.

Menu

- Monies were used solely to increase eligible employee compensation.