

Morristown Elementary School District

Maricopa County
Operational peer group: L
Legislative districts: 4

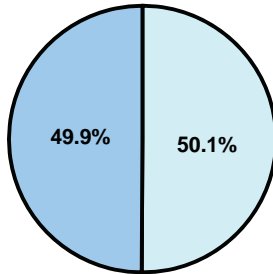
District size: Very Small
Students attending: 138
Number of schools: 1

OPERATIONAL EFFICIENCY

Average per-pupil spending

District
State

Classroom
\$5,058
\$4,497



Nonclassroom
\$5,084
\$3,411

Total
\$10,142
\$7,908

5-year trend

Total spending per pupil increased by 30 percent. Spending in the classroom was very inconsistent year to year and increased slightly overall from 49.8 to 49.9 percent. Spending on plant operations and instruction support decreased significantly, spending on student support increased significantly, and spending in other nonclassroom areas was very inconsistent year to year.

District's cost measures relative to peer group

Operational Area	Measure	District	Peer Average	State Average
Administration	Cost per pupil	\$1,429	\$2,656	\$729
	Students per administrator	55	32	66
Plant Operations	Cost per square foot	\$5.49	\$7.53	\$6.40
	Square footage per student	244	318	144
Food Service	Cost per meal equivalent	\$4.05	\$5.10	\$2.53
Transportation	Cost per mile	\$1.42	\$1.79	\$3.36
	Miles per rider	350	710	271

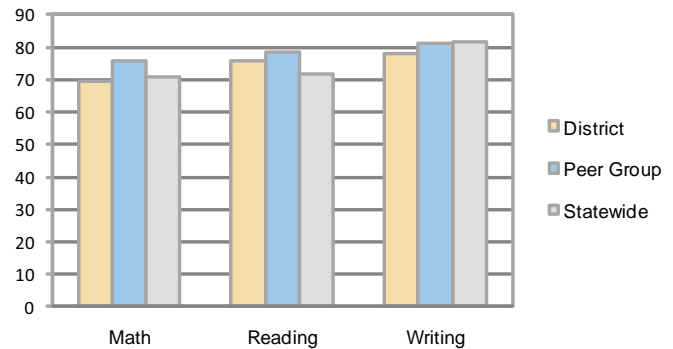
Very Low Low Comparable High Very High

Per-pupil spending by function

	District		Peer	State	National
	2008	2009	2009	2009	2007
Total	\$10,314	\$10,142	\$16,311	\$7,908	\$9,683
Classroom dollars	\$5,152	\$5,058	\$8,757	\$4,497	\$5,903
Nonclassroom dollars:	\$5,162	\$5,084	\$7,554	\$3,411	\$3,780
Administration	1,365	1,429	2,656	729	1,050
Plant Operations	1,368	1,338	2,297	920	951
Food Service	812	855	859	382	369
Transportation	849	681	930	343	406
Student Support	459	565	474	594	512
Instruction Support	309	207	338	431	470
Other	0	9	0	12	22

STUDENT ACHIEVEMENT AND TEACHER INFORMATION

Percentage of students meeting state standards (AIMS)



Adequate Yearly Progress (AYP) toward federal goals

The District's school met all applicable AYP objectives for NCLB.

Student and teacher information

Measure	District	Peer average	State average
Attendance rate	95%	95%	95%
Graduation rate (2008)	N/A	55%	75%
Poverty rate	12%	12%	19%
Student/teacher ratio	17.7	10.7	17.1
Average teacher salary	\$49,197	\$45,399	\$45,209
Average years' experience	10.4	10.9	8.3
Percent of teachers in first 3 years	12%	18%	16%

Proposition 301

Teacher pay

On average, each teacher earned \$5,258 in additional salary.

Performance pay plan goals and results

Type of goal	Goal met?
Student achievement	■
Dropout/ graduation rates	■
Student attendance	■
Parent/student satisfaction	■
Teacher attendance	■
Teacher professional development	■
Teacher evaluations	■
Tutoring	■
Other	■

■ = yes, □ = no, and ▴ = partially