

Morristown Elementary School District

Maricopa County

Efficiency peer groups 11 and T-11, Achievement peer group 16

Legislative district(s): 13

District size, location:

Very small, Rural

Students attending:

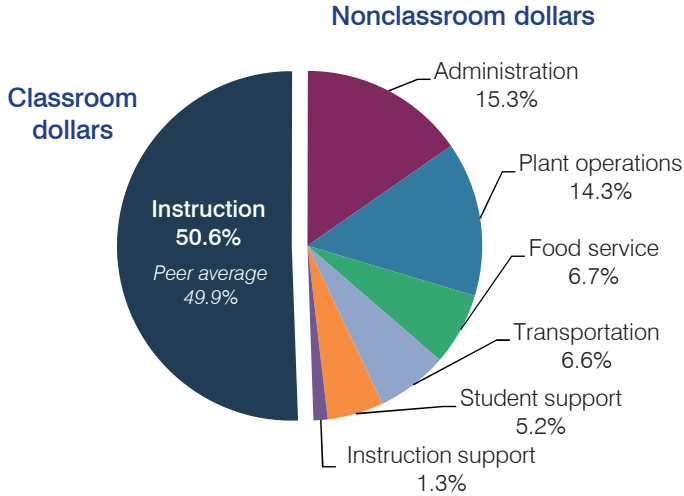
126

Number of schools:

1

OPERATIONAL EFFICIENCY

Spending by operational area



Efficiency measures relative to peer averages

Operational area	Measure	District	Peer average	State average
Administration	Cost per pupil	\$1,737	\$3,013	\$780
	Students per administrative position	63	29	67
Plant operations	Cost per square foot	\$6.11	\$6.80	\$6.09
	Square footage per student	267	370	153
Food service	Cost per meal equivalent	\$2.67	\$5.66	\$2.79
Transportation	Cost per mile	\$0.77	\$1.55	\$3.66
	Cost per rider	\$732	\$1,620	\$1,071

Per pupil spending

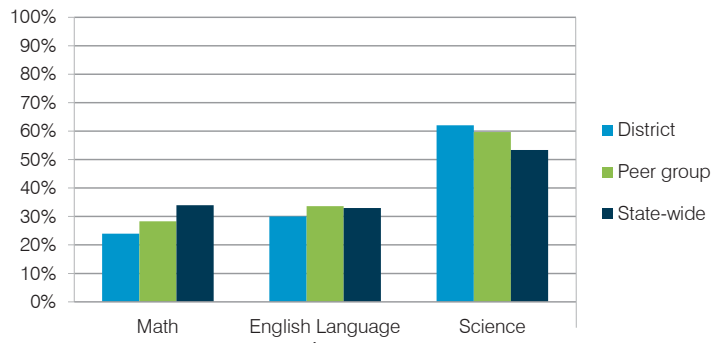
Spending by area	District		Peer average	State average
	2014	2015	2015	2015
Instruction	\$ 5,770	\$ 5,747	\$ 8,258	\$ 4,105
Administration	1,485	1,737	3,013	780
Plant operations	1,468	1,630	2,390	930
Food service	590	764	967	417
Transportation	837	748	1,127	371
Student support	570	593	664	613
Instruction support	183	143	572	442
Total operational	\$ 10,903	\$ 11,362	\$ 16,991	\$ 7,658
Land and buildings	\$ 748	\$ 34	\$ 961	\$ 641
Equipment	68	135	582	383
Interest	0	0	40	225
Other	0	8	90	150
Total nonoperational	\$ 816	\$ 177	\$ 1,673	\$ 1,399
Total per pupil spending	\$ 11,719	\$ 11,539	\$ 18,664	\$ 9,057

STUDENT AND TEACHER MEASURES, FINANCIAL ASSESSMENT, AND REVENUE

Student and teacher measures

Measure	District	Peer average	State average
Attendance rate	95%	94%	94%
Graduation rate (2014)	N/A	N/A	N/A
Poverty rate (2014)	13%	11%	23%
Students per teacher	12.6	11.9	18.6
Average teacher salary	\$45,191	\$44,450	\$46,008
Average years of teacher experience	17.1	12.8	11.0
Percentage of teachers in first 3 years	0%	12%	20%

Students who met state standards



Financial stress assessment

Overall financial stress level: **Moderate**

Measure: 2013 through 2015

Assessment

Change in number of district students	Small school adjustment
Spending exceeded operating/capital budgets	No overspending
Spending increase election results	Voter-rejected
Operating reserve percentage (max. 4%), trend	2.7%, Decreasing
Years of capital reserve held	1 to 3 years
Current financial and internal control status	Marginally compliant

Low Moderate High

Per pupil revenues

Revenues by source	District		Peer average	State average
	2014	2015	2015	2015
Federal	\$ 1,464	\$ 1,276	\$ 2,858	\$ 1,299
State	6,038	4,280	4,521	3,517
Local	4,400	3,882	13,591	4,248
Total revenues per pupil	\$11,902	\$ 9,438	\$20,970	\$ 9,064
Select revenues from common sources				
Equalization formula funding	\$ 7,676	\$ 6,046	\$ 9,139	\$ 5,303
Grants	2,170	1,496	3,089	1,167
Donations and tax credits	191	222	159	78
Select revenues from less common sources				
Number of peers receiving				
Desegregation	\$ 0	\$ 0	0 of 53	
Small school adjustment	0	0	41 of 53	
Federal impact aid	0	0	3 of 53	
Voter-approved levy increases	714	731	7 of 53	

Morristown ESD—page 2

Classroom dollar percentage

Year:	2001	2002	2003	2004	2005	2006	2007	2008	2009	2010	2011	2012	2013	2014	2015
Percentage:	49.5	47.0	49.9	49.8	45.8	47.8	47.8	49.9	49.9	48.6	51.7	52.7	52.3	52.9	50.6

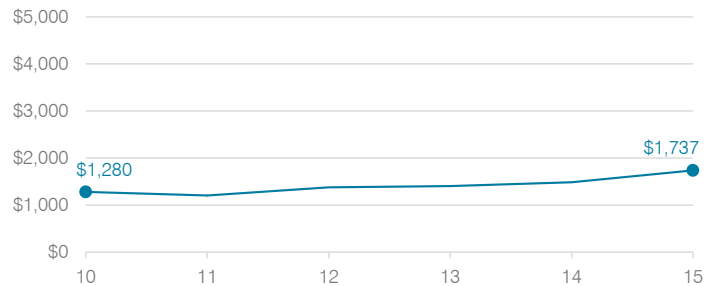
OPERATIONAL TRENDS

Fiscal years as indicated

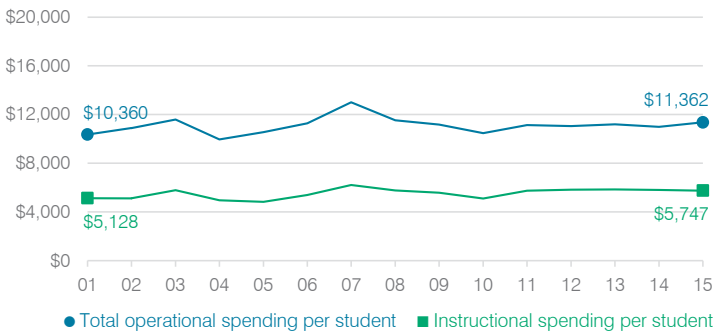
5-year spending trend (2010 through 2015)

Total operational spending per pupil, adjusted for inflation, decreased by 8 percent. The percentage of dollars spent in the classroom varied year to year, increasing overall from 48.6 to 50.6 percent. As a percentage of total operational spending, most nonclassroom areas also varied year to year, as is common for very small districts. Overall, plant operations and food service decreased and instruction support decreased slightly.

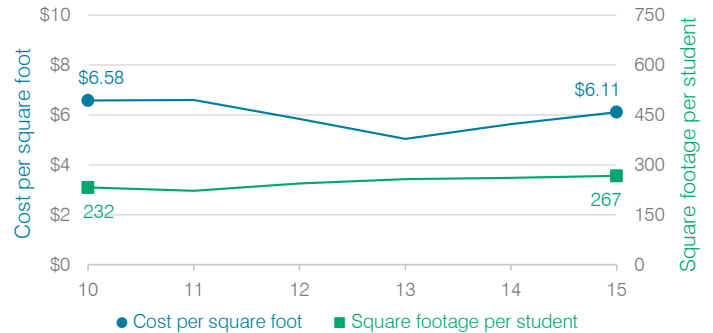
Administrative cost per student



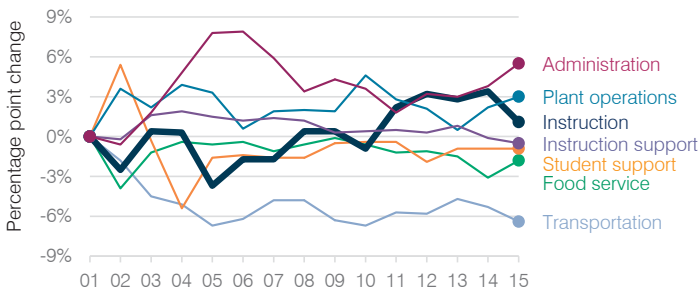
Total operational and instructional spending per student (inflation adjusted to 2015 dollars)



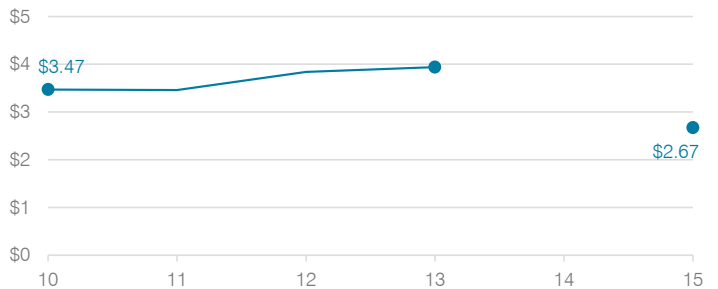
Plant cost per square foot and square footage per student



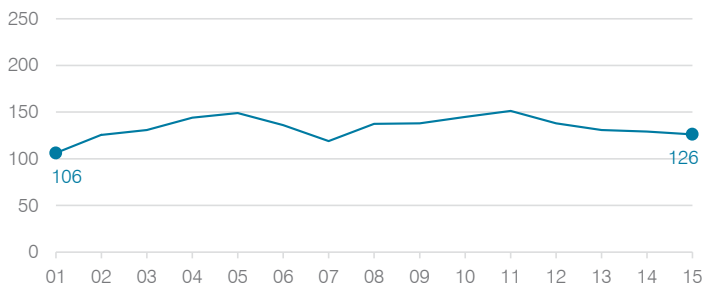
Changes in operational spending percentages



Food service cost per meal



Students attending



Transportation costs per mile and per rider

