

# Murphy Elementary School District

Maricopa County

Efficiency peer groups 8 and T-1, Achievement peer group 15

Legislative district(s): 19 and 27

District size, location:

Medium, City

Students attending:

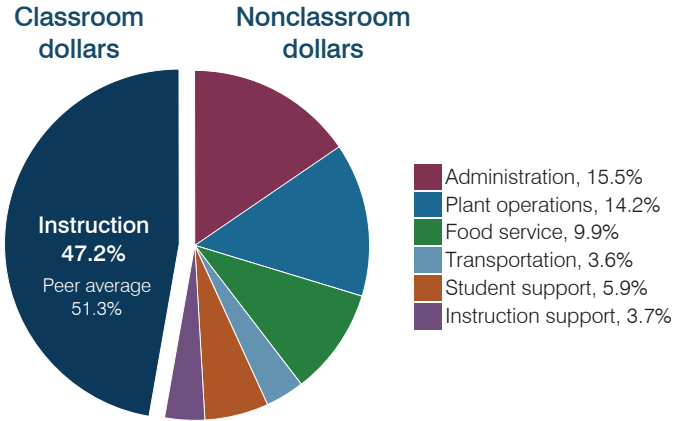
1,756

Number of schools:

4

## OPERATIONAL EFFICIENCY

### Spending by operational area



### Efficiency measures relative to peer averages

Operational area	Measure	District	Peer average	State average
Administration	Cost per pupil	\$1,447	\$943	\$806
	Students per administrative position	53	71	67
Plant operations	Cost per square foot	\$7.65	\$6.27	\$6.10
	Square footage per student	174	141	154
Food service	Cost per meal	\$3.06	\$2.60	\$2.81
Transportation	Cost per mile	\$9.25	\$6.21	\$3.72
	Cost per rider	\$1,161	\$783	\$1,092

### Per pupil spending

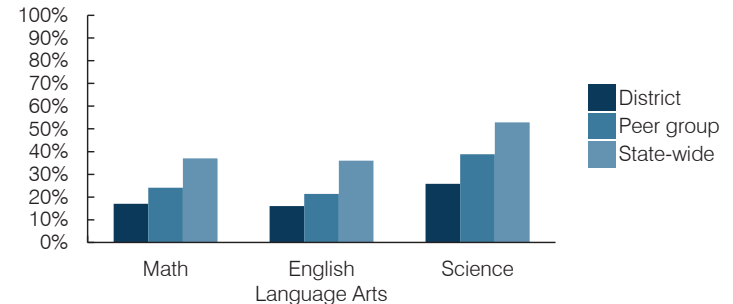
Spending by area	District		Peer average 2016	State average 2016
	2015	2016		
Instruction	\$ 4,506	\$ 4,422	\$ 3,896	\$ 4,145
Administration	1,366	1,447	943	806
Plant operations	1,092	1,329	866	939
Food service	855	921	598	415
Transportation	305	334	301	364
Student support	477	555	562	633
Instruction support	471	350	495	444
<b>Total operational</b>	<b>\$ 9,072</b>	<b>\$ 9,358</b>	<b>\$ 7,661</b>	<b>\$ 7,746</b>
Land and buildings	\$ 519	\$ 341	\$ 1,802	\$ 621
Equipment	416	197	577	400
Interest	320	252	250	216
Other	38	103	155	153
<b>Total nonoperational</b>	<b>\$ 1,293</b>	<b>\$ 893</b>	<b>\$ 2,784</b>	<b>\$ 1,390</b>
<b>Total per pupil spending</b>	<b>\$ 10,365</b>	<b>\$ 10,251</b>	<b>\$ 10,445</b>	<b>\$ 9,136</b>

## STUDENT AND TEACHER MEASURES, FINANCIAL ASSESSMENT, AND REVENUES

### Student and teacher measures

Measure	District	Peer average	State average
Attendance rate (2015)	94%	94%	94%
Graduation rate (2015)	N/A	N/A	N/A
Poverty rate (2015)	52%	49%	23%
Students per teacher	21.7	18.3	18.6
Average teacher salary	\$48,436	\$48,763	\$46,384
Amount from Proposition 301	\$6,148	\$4,203	\$5,315
Average years of teacher experience	11.5	10.0	11.0
Percentage of teachers in first 3 years	22%	27%	20%

### Students who passed state assessments



### Financial stress assessment

Overall financial stress level: **Low**

Measure: 2014 through 2016

Measure	Assessment
Change in number of district students	Steady
Spending exceeded operating/capital budgets	No overspending
Spending increase election results	Voter-approved
Operating reserve percentage, Trend	5.2%, Increasing
Years of capital reserve held	More than 3 years
Current financial and internal control status	Marginally compliant

Low Moderate High

### Per pupil revenues

Revenues by source	District		Peer average 2016	State average 2016
	2015	2016		
Federal	\$ 2,864	\$ 2,737	\$ 1,781	\$ 1,301
State	3,675	4,301	3,849	3,780
Local	2,647	3,558	4,470	4,268
<b>Total revenues per pupil</b>	<b>\$ 9,186</b>	<b>\$ 10,596</b>	<b>\$ 10,100</b>	<b>\$ 9,349</b>

### Select revenues from common sources

Source	District	Peer average	State average
Equalization formula funding	\$ 4,712	\$ 5,167	\$ 5,085
Grants	2,873	2,736	1,865
Donations and tax credits	12	3	46

### Select revenues from less common sources

Source	District	Peer average	State average
Desegregation	\$ 0	\$ 0	4 of 19
Small school adjustment	0	0	0 of 19
Federal impact aid	0	0	0 of 19
Voter-approved levy increases	1,495	1,510	19 of 19

# Murphy ESD—page 2

## Classroom dollar percentage

Year:	2001	2002	2003	2004	2005	2006	2007	2008	2009	2010	2011	2012	2013	2014	2015	2016
Percentage:	47.4	53.3	55.1	54.4	55.7	56.4	51.8	51.0	50.6	48.1	47.7	46.9	47.9	48.0	49.7	47.2

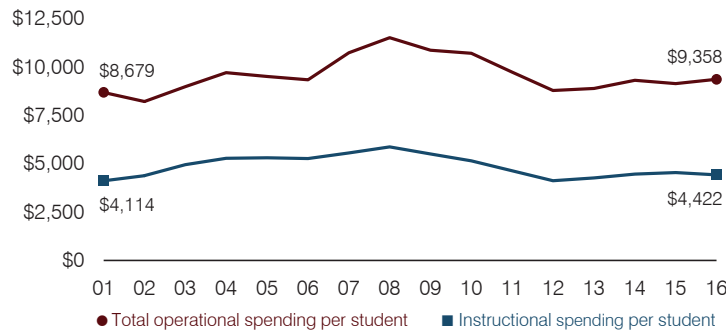
## OPERATIONAL TRENDS

Fiscal years as indicated

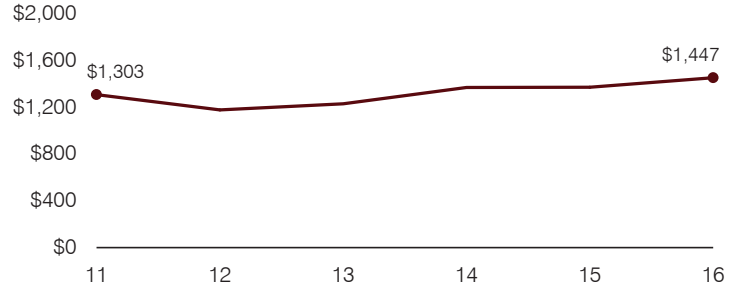
### 5-year spending trend (2011 through 2016)

Total operational spending per pupil, adjusted for inflation, decreased by 4 percent. The percentage of dollars spent in the classroom varied year to year, ranging overall from a high of 49.7 to a low of 46.9 percent. Overall, as a percentage of total operational spending, food service increased substantially, administration and plant operations increased, and transportation increased slightly.

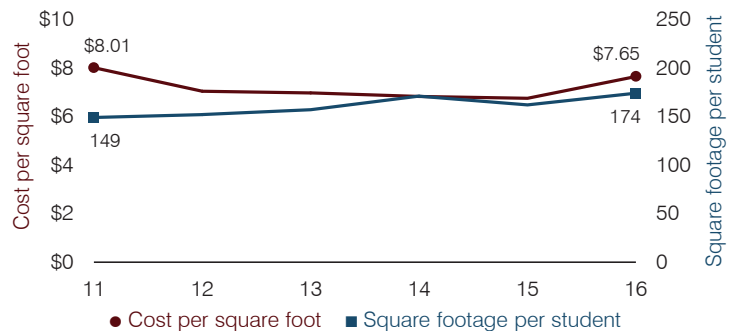
### Total operational and instructional spending per pupil (inflation adjusted to 2016 dollars)



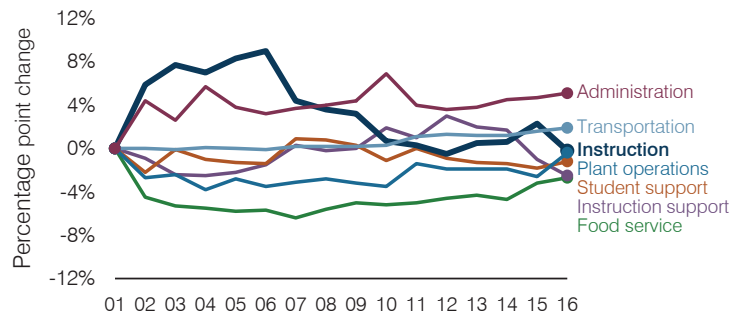
### Administrative cost per pupil



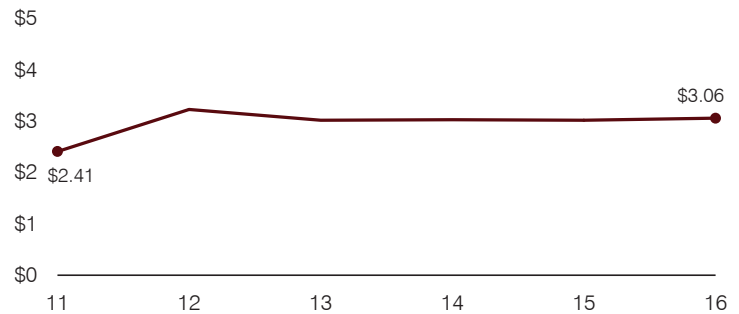
### Plant cost per square foot and square footage per student



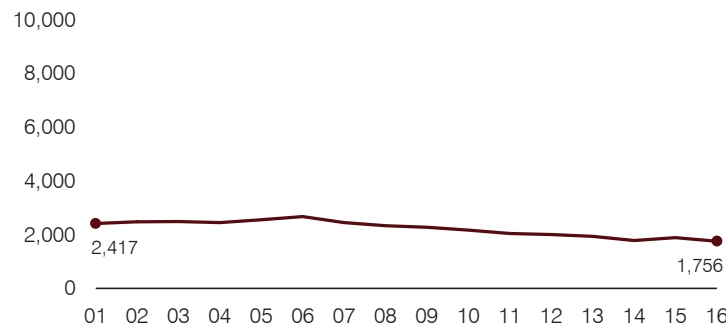
### Changes in operational spending percentages



### Food service cost per meal



### Students attending



### Transportation costs per mile and per rider

