

Murphy Elementary School District

Maricopa County

Efficiency peer groups 8 and T-1, Achievement peer group 15¹

Legislative district(s): 19 and 27

District size, location:

Medium, City

Students attending:

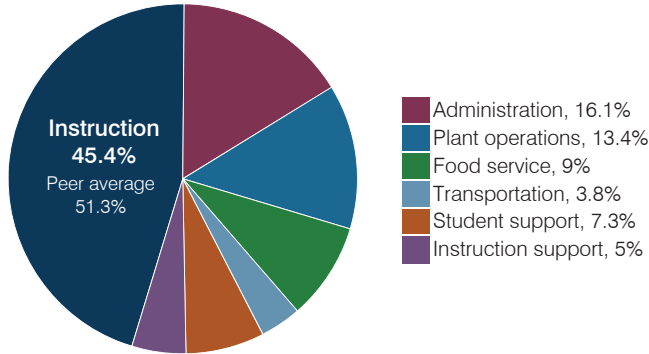
1,591

Number of schools:

4

OPERATIONAL EFFICIENCY

Spending by operational area



Efficiency measures relative to peer averages

Operational area	Measure	District	Peer average	State average
Administration	Cost per pupil	\$1,705	\$974	\$844
	Students per administrative position	44	68	67
Plant operations	Cost per square foot	\$7.39	\$6.31	\$6.30
	Square footage per student	192	147	155
Food service	Cost per meal	\$3.13	\$2.75	\$2.88
Transportation	Cost per mile	\$10.59	\$6.81	\$3.84
	Cost per rider	\$1,305	\$942	\$1,198

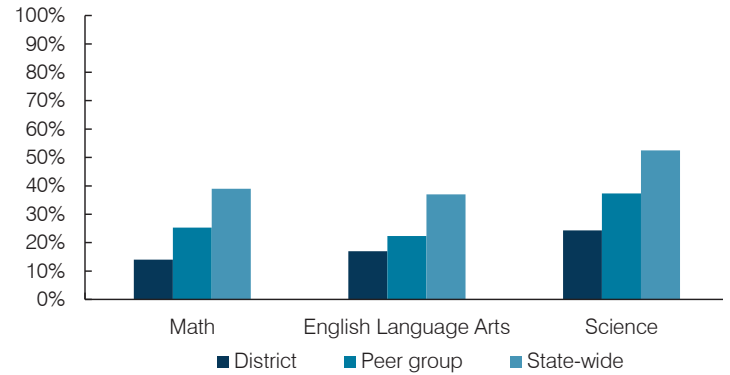
Very low Low Comparable High Very high

Per pupil spending

Spending by area	District		Peer average 2017	State average 2017
	2016	2017		
Instruction	\$ 4,422	\$ 4,803	\$ 4,164	\$ 4,377
Administration	1,447	1,705	974	844
Plant operations	1,329	1,417	909	977
Food service	921	948	640	422
Transportation	334	403	327	381
Student support	555	778	626	679
Instruction support	350	534	559	461
Total operational	\$ 9,358	\$ 10,588	\$ 8,199	\$ 8,141
Land and buildings	\$ 341	\$ 334	\$ 924	\$ 691
Equipment	197	489	582	424
Interest	252	234	255	236
Other	103	94	146	161
Total nonoperational	\$ 893	\$ 1,151	\$ 1,907	\$ 1,512
Total per pupil spending	\$ 10,251	\$ 11,739	\$ 10,106	\$ 9,653

STUDENT ACHIEVEMENT, STUDENT AND TEACHER MEASURES, AND REVENUES

Students who passed state assessments



Student and teacher measures

Measure	District	Peer average	State average
Attendance rate	95%	94%	94%
Graduation rate (2016)	N/A	N/A	N/A
Poverty rate (2016)	44%	44%	22%
Special education population	10%	10%	12%
Students per teacher	23.7	19.1	18.5
Average teacher salary	\$51,953	\$52,696	\$48,372
Amount from Prop 301	\$6,084	\$4,542	\$5,840
Average years of teacher experience	9.3	10.3	11.3
Percentage of teachers in first 3 years	24%	22%	19%

Per pupil revenues

Revenues by source	District		Peer average 2017	State average 2017
	2016	2017		
Federal	\$ 2,737	\$ 3,863	\$ 1,848	\$ 1,318
State	4,301	4,244	3,857	3,831
Local	3,558	3,891	4,627	4,443
Total per pupil revenues	\$ 10,596	\$ 11,998	\$ 10,332	\$ 9,592

Select revenues from common sources

	District 2016	District 2017	Peer average 2017	State average 2017
Equalization formula funding	\$ 5,167	\$ 5,339	\$ 5,145	\$ 5,503
Amount from Prop 123	242	249	236	245
Prop 123 additional funding	45	46	43	46
Grants	2,736	3,872	1,915	1,185
Donations and tax credits	3	22	54	89

Select revenues from less common sources

	District 2016	District 2017	Number of peers receiving
Desegregation	\$ 0	\$ 0	4 of 19
Small school adjustment	0	0	0 of 19
Federal impact aid	0	0	0 of 19
Voter-approved levy increases	1,510	1,599	19 of 19

¹ See Appendix A for information such as districts included in each peer group and Appendix B for sources and methodology.

Murphy ESD—page 2

Instructional spending percentage

Year:	2001	2002	2003	2004	2005	2006	2007	2008	2009	2010	2011	2012	2013	2014	2015	2016	2017
Percentage:	47.4	53.3	55.1	54.4	55.7	56.4	51.8	51.0	50.6	48.1	47.7	46.9	47.9	48.0	49.7	47.2	45.4

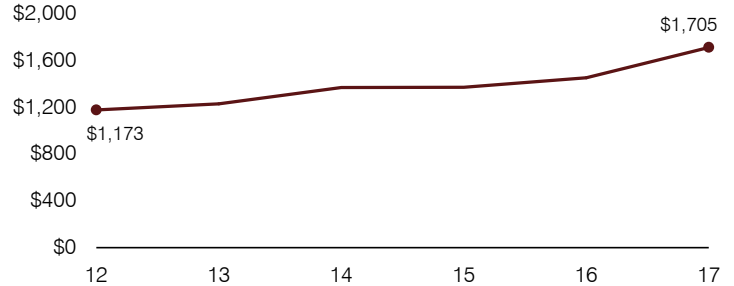
OPERATIONAL TRENDS AND FINANCIAL STRESS ASSESSMENT

Fiscal years as indicated

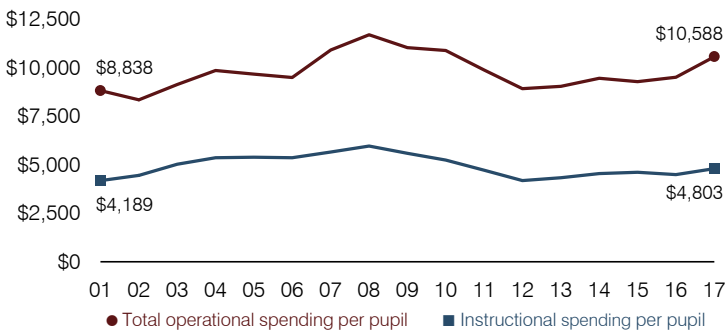
5-year spending trend (2012 through 2017)

Student enrollment decreased by 21 percent, which contributed to the 18 percent increase in total operational spending per pupil, adjusted for inflation. The percentage of dollars spent on instruction varied year to year, decreasing overall from 46.9 to 45.4 percent. As a percentage of total operational spending, administration increased substantially, while overall instruction support decreased substantially.

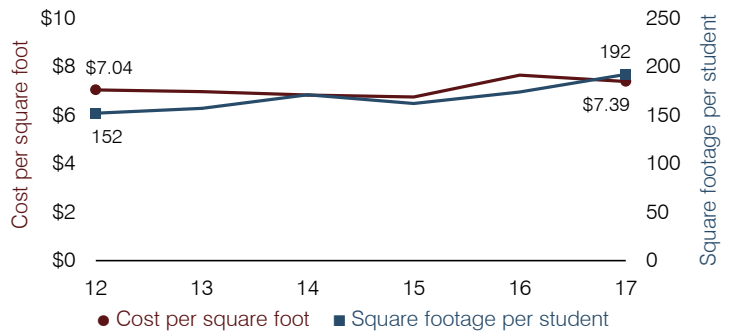
Administrative cost per pupil



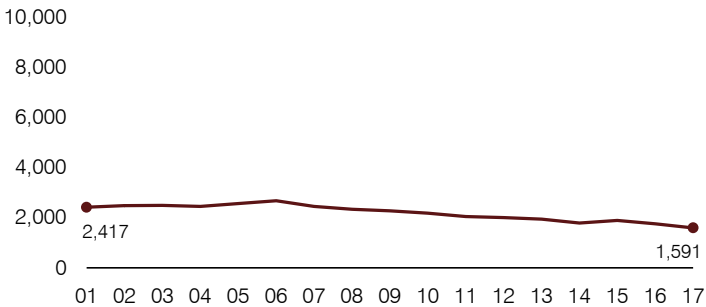
Total operational and instructional spending per pupil (inflation adjusted to 2017 dollars)



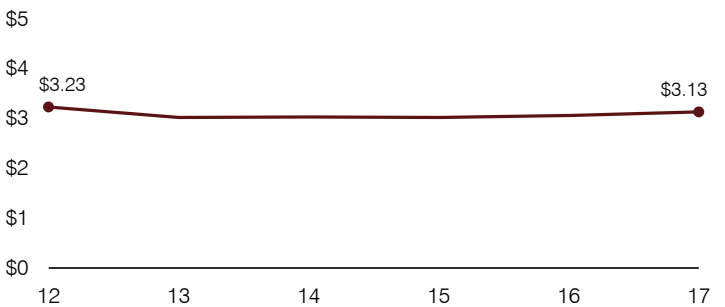
Plant cost per square foot and square footage per student



Students attending



Food service cost per meal



Financial stress assessment

Overall financial stress level:

Low

Measure: 2015 through 2017

Assessment

Change in number of district students	Large decrease
Spending exceeded operating/capital budgets	No overspending
Spending increase election results	Voter-approved
Operating reserve percentage, Trend	5.6%, Varying
Years of capital reserve held	More than 3 years
Current financial and internal control status	Compliant

Low

Moderate

High

Transportation costs per mile and per rider

