

# Murphy Elementary School District

Maricopa County  
Operational peer group: I  
Legislative districts: 16

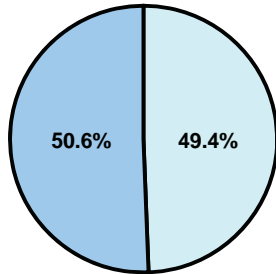
District size: Medium-Large  
Students attending: 2,273  
Number of schools: 4

## OPERATIONAL EFFICIENCY

### Average per-pupil spending

District  
State

Classroom  
**\$4,953**  
\$4,497



Nonclassroom  
**\$4,831**  
\$3,411

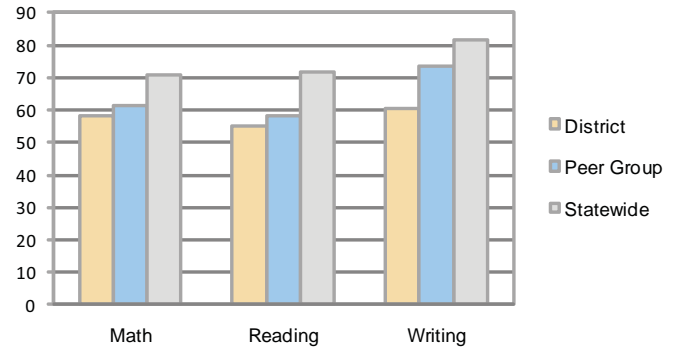
Total  
**\$9,784**  
\$7,908

### 5-year trend

Total spending per pupil increased by 29 percent. Spending in the classroom varied year to year and decreased significantly overall from 54.4 to 50.6 percent. Spending on student and instruction support increased significantly, while spending in other areas varied year to year.

## STUDENT ACHIEVEMENT AND TEACHER INFORMATION

### Percentage of students meeting state standards (AIMS)



### Adequate Yearly Progress (AYP) toward federal goals

2 schools met all applicable AYP objectives for NCLB. 2 did not because some students did not demonstrate sufficient academic progress.

### District's cost measures relative to peer group

Operational Area	Measure	District	Peer Average	State Average
Administration	Cost per pupil	\$1,452	\$840	\$729
	Students per administrator	49	69	66
Plant Operations	Cost per square foot	\$8.34	\$7.16	\$6.40
	Square footage per student	134	123	144
Food Service	Cost per meal equivalent	\$2.92	\$2.38	\$2.53
Transportation	Cost per mile	\$4.14	\$5.18	\$3.36
	Miles per rider	73	132	271

Very Low    Low    Comparable    High    Very High

### Student and teacher information

Measure	District	Peer average	State average
Attendance rate	94%	95%	95%
Graduation rate (2008)	N/A	86%	75%
Poverty rate	46%	31%	19%
Student/teacher ratio	18.6	16.2	17.1
Average teacher salary	\$43,782	\$46,306	\$45,209
Average years' experience	7.5	8.5	8.3
Percent of teachers in first 3 years	51%	33%	16%

### Proposition 301

#### Teacher pay

On average, each teacher, librarian, speech pathologist, and counselor earned between \$5,252 and \$6,612 in additional salary, which includes performance pay for fiscal year 2008.

#### Performance pay plan goals and results

Type of goal	Goal met?
Student achievement	▲
Dropout/ graduation rates	■
Student attendance	■
Parent/student satisfaction	■
Teacher attendance	■
Teacher professional development	■
Teacher evaluations	■
Tutoring	■
Other	▲

■ = yes, □ = no, and ▲ = partially

### Per-pupil spending by function

	District		Peer	State	National
	2008	2009	2009	2009	2007
<b>Total</b>	<b>\$10,225</b>	<b>\$9,784</b>	<b>\$8,194</b>	<b>\$7,908</b>	<b>\$9,683</b>
<b>Classroom dollars</b>	<b>\$5,213</b>	<b>\$4,953</b>	<b>\$4,515</b>	<b>\$4,497</b>	<b>\$5,903</b>
<b>Nonclassroom dollars:</b>	<b>\$5,012</b>	<b>\$4,831</b>	<b>\$3,679</b>	<b>\$3,411</b>	<b>\$3,780</b>
Administration	1,471	1,452	840	729	1,050
Plant Operations	1,204	1,119	890	920	951
Food Service	711	745	525	382	369
Transportation	196	188	253	343	406
Student Support	811	725	626	594	512
Instruction Support	619	602	545	431	470
Other	0	0	0	12	22