

# Murphy Elementary School District

Maricopa County

Efficiency peer groups 8 and T-1, Achievement peer group 15

Legislative district(s): 19 and 27

District size, location:

Medium, City

Students attending:

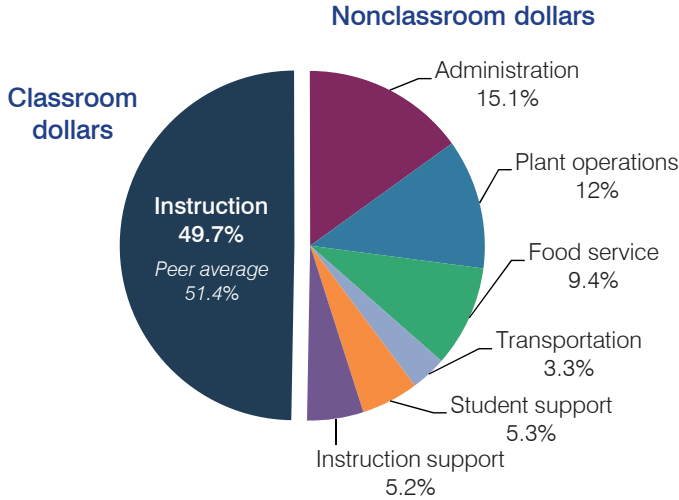
1,886

Number of schools:

4

## OPERATIONAL EFFICIENCY

### Spending by operational area



### Efficiency measures relative to peer averages

Operational area	Measure	District	Peer average	State average
Administration	Cost per pupil	\$1,366	\$918	\$780
	Students per administrative position	47	70	67
Plant operations	Cost per square foot	\$6.75	\$6.18	\$6.09
	Square footage per student	162	140	153
Food service	Cost per meal equivalent	\$3.02	\$2.61	\$2.79
Transportation	Cost per mile	\$9.34	\$6.37	\$3.66
	Cost per rider	\$1,032	\$837	\$1,071

Very low Low Comparable High Very high

### Per pupil spending

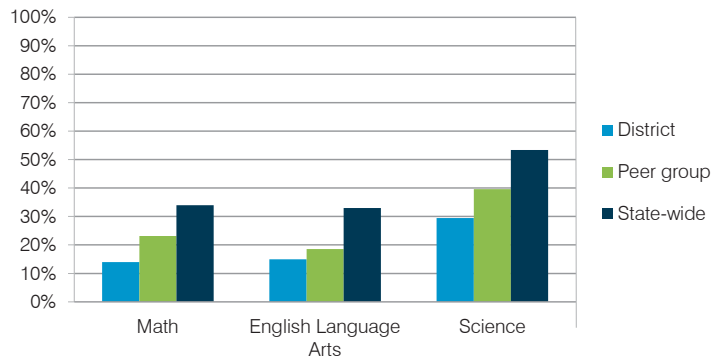
Spending by area	District		Peer average	State average
	2014	2015	2015	2015
Instruction	\$ 4,404	\$ 4,506	\$ 3,933	\$ 4,105
Administration	1,364	1,366	918	780
Plant operations	1,168	1,092	851	930
Food service	725	855	592	417
Transportation	267	305	295	371
Student support	526	477	564	613
Instruction support	719	471	484	442
<b>Total operational</b>	<b>\$ 9,173</b>	<b>\$ 9,072</b>	<b>\$ 7,637</b>	<b>\$ 7,658</b>
Land and buildings	\$ 782	\$ 519	\$ 1,094	\$ 641
Equipment	303	416	412	383
Interest	343	320	239	225
Other	110	38	136	150
<b>Total nonoperational</b>	<b>\$ 1,538</b>	<b>\$ 1,293</b>	<b>\$ 1,881</b>	<b>\$ 1,399</b>
<b>Total per pupil spending</b>	<b>\$ 10,711</b>	<b>\$ 10,365</b>	<b>\$ 9,518</b>	<b>\$ 9,057</b>

## STUDENT AND TEACHER MEASURES, FINANCIAL ASSESSMENT, AND REVENUE

### Student and teacher measures

Measure	District	Peer average	State average
Attendance rate	94%	94%	94%
Graduation rate (2014)	N/A	N/A	N/A
Poverty rate (2014)	50%	50%	23%
Students per teacher	19.1	18.5	18.6
Average teacher salary	\$47,561	\$49,020	\$46,008
Average years of teacher experience	8.8	9.0	11.0
Percentage of teachers in first 3 years	41%	33%	20%

### Students who met state standards



### Financial stress assessment

Overall financial stress level: **Low**

Measure: 2013 through 2015

Assessment

Change in number of district students	Steady
Spending exceeded operating/capital budgets	No overspending
Spending increase election results	No election held
Operating reserve percentage (max. 4%), trend	4.0%, Steady
Years of capital reserve held	More than 3 years
Current financial and internal control status	Compliant

Low Moderate High

### Per pupil revenues

Revenues by source	District		Peer average	State average
	2014	2015	2015	2015
Federal	\$ 2,978	\$ 2,864	\$ 1,698	\$ 1,299
State	3,982	3,675	3,607	3,517
Local	2,471	2,647	4,048	4,248
<b>Total revenues per pupil</b>	<b>\$ 9,431</b>	<b>\$ 9,186</b>	<b>\$ 9,353</b>	<b>\$ 9,064</b>
<b>Select revenues from common sources</b>				
Equalization formula funding	\$ 5,247	\$ 4,712	\$ 4,908	\$ 5,303
Grants	2,890	2,873	1,782	1,167
Donations and tax credits	25	12	46	78
<b>Select revenues from less common sources</b>				
Desegregation	\$ 0	\$ 0	4 of 19	
Small school adjustment	0	0	0 of 19	
Federal impact aid	0	0	0 of 19	
Voter-approved levy increases	1,553	1,495	19 of 19	

# Murphy ESD—page 2

## Classroom dollar percentage

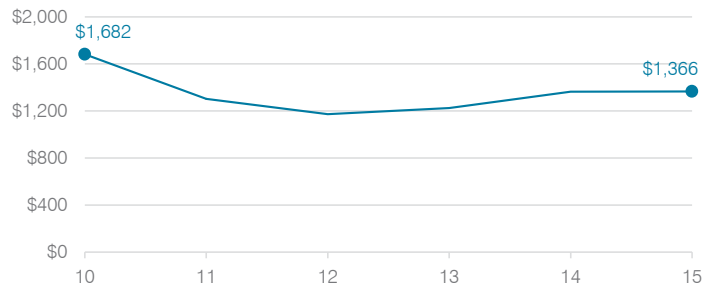
Year:	2001	2002	2003	2004	2005	2006	2007	2008	2009	2010	2011	2012	2013	2014	2015
Percentage:	47.4	53.3	55.1	54.4	55.7	56.4	51.8	51.0	50.6	48.1	47.7	46.9	47.9	48.0	49.7

### OPERATIONAL TRENDS Fiscal years as indicated

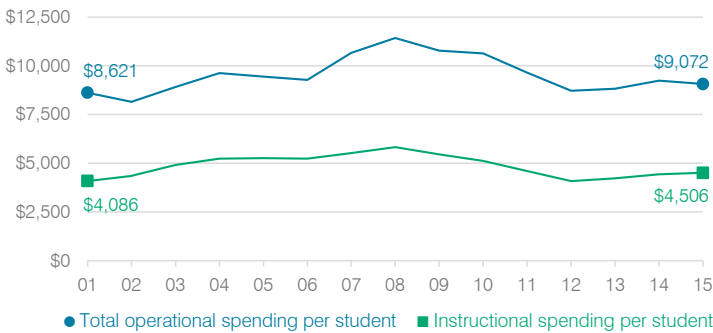
#### 5-year spending trend (2010 through 2015)

Total operational spending per pupil, adjusted for inflation, decreased by 15 percent. The percentage of dollars spent in the classroom varied year to year, increasing overall from 48.1 to 49.7 percent. Overall, as a percentage of total operational spending, administration and instruction support decreased substantially and student support decreased slightly, while food service increased substantially.

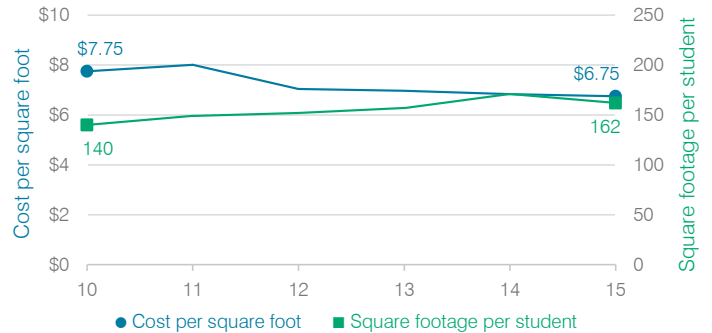
#### Administrative cost per student



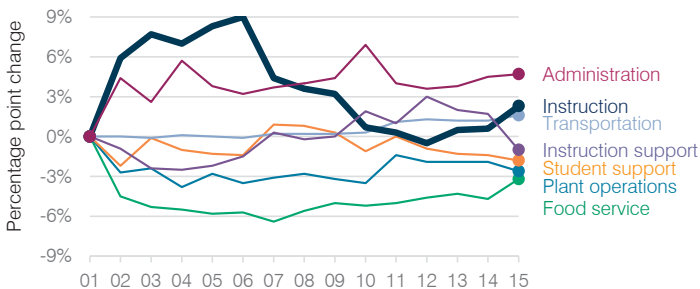
#### Total operational and instructional spending per student (inflation adjusted to 2015 dollars)



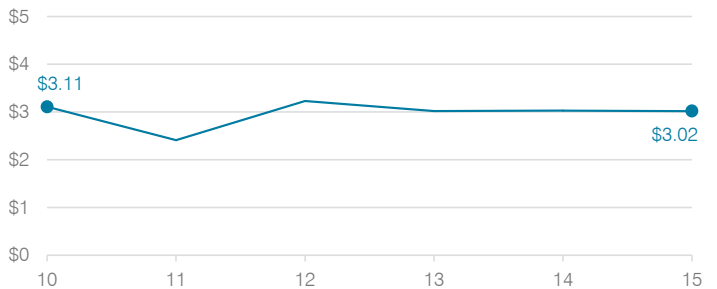
#### Plant cost per square foot and square footage per student



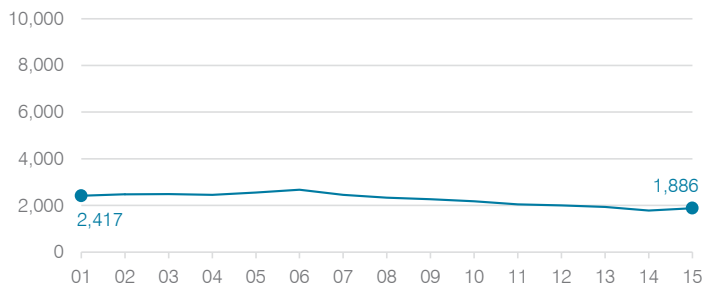
#### Changes in operational spending percentages



#### Food service cost per meal



#### Students attending



#### Transportation costs per mile and per rider

