

# Naco Elementary School District

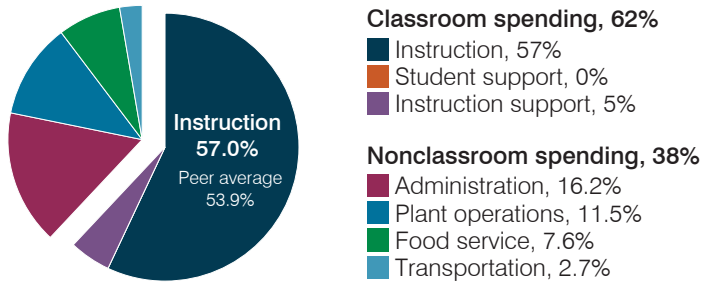
Cochise County  
 Peer groups: Operational 10 and T-8, Achievement 19<sup>1</sup>  
 Legislative district(s): 14  
 District location: Rural  
 Number of schools: 1  
 Graduation rate (2018): N/A

Students attending; Size: 289; Small  
 5-year change in students attending: 3% decrease  
 Special education population: 7%  
 English learner population: 46%  
 Poverty rate (2018): 28%  
 Free/reduced meal eligibility: 89%

## Instructional spending percentage by year

2001	2002	2003	2004	2005	2006	2007	2008	2009	2010	2011	2012	2013	2014	2015	2016	2017	2018	2019
64.2	67.3	59.7	62.7	65.3	61.0	63.0	63.1	55.6	59.9	57.2	58.8	58.7	57.6	55.3	59.4	59.2	55.4	57.0

## Spending by operational area



## Operational measures relative to peer averages

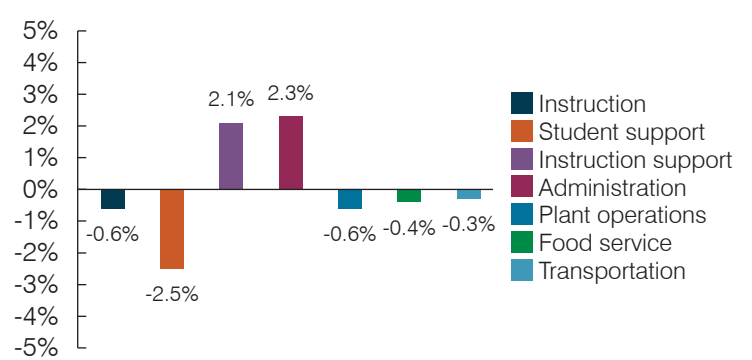
Operational area	Measure	District	Peer average	State average
Administration	Cost per pupil	\$1,424	\$1,326	\$903
	Students per administrative position	58	52	66
Plant operations	Cost per square foot	\$8.12	\$6.87	\$6.49
	Square footage per student	125	196	158
Food service	Cost per meal	\$4.43	\$3.37	\$3.08
Transportation	Cost per mile	\$7.52	\$3.26	\$4.29
	Cost per rider	\$2,968	\$1,447	\$1,424



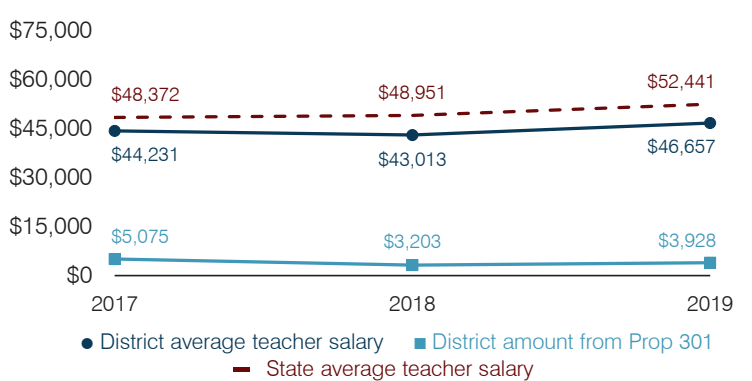
## Per pupil spending

Spending by area	District		Peer average 2019	State average 2019
	2018	2019		
Instruction	\$ 4,800	\$ 5,018	\$ 5,443	\$ 4,869
Student support	199	0	538	754
Instruction support	314	438	403	497
Administration	1,064	1,424	1,326	903
Plant operations	1,104	1,012	1,175	1,027
Food service	666	673	588	438
Transportation	522	236	681	417
<b>Total operational</b>	<b>8,669</b>	<b>8,801</b>	<b>10,154</b>	<b>8,905</b>
Land and buildings	0	7	215	1,086
Equipment	279	751	769	496
Interest	0	0	129	261
Other	0	0	126	180
<b>Total nonoperational</b>	<b>279</b>	<b>758</b>	<b>1,239</b>	<b>2,023</b>
<b>Total per pupil spending</b>	<b>\$ 8,948</b>	<b>\$ 9,559</b>	<b>\$ 11,393</b>	<b>\$ 10,928</b>

## Percentage point change in spending by operational area (fiscal year 2014 versus 2019)

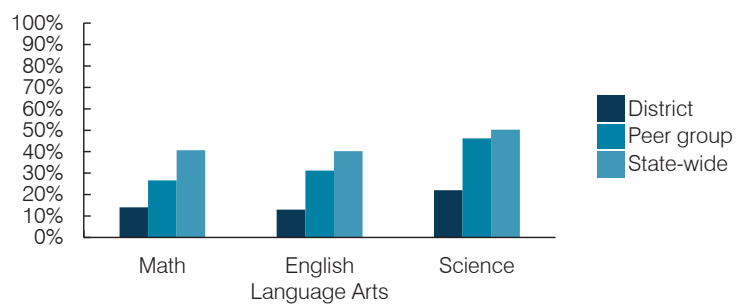


## Average teacher salary and other measures



Measure	2017	2018	2019
Students per teacher	20.5	18.4	20.7
Average years of teacher experience	9.4	9.4	10.4
Percentage of teachers in first 3 years	7%	13%	14%

## Students who passed State assessments<sup>2</sup>



<sup>1</sup> See Appendix A for information, such as districts included in each peer group, and Appendix B for sources and methodology.  
<sup>2</sup> School letter grades are available at <https://azreportcards.azed.gov>.