

# Naco Elementary School District

Cochise County  
Operational peer group: K  
Legislative districts: 16

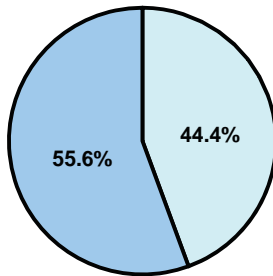
District size: Small  
Students attending: 268  
Number of schools: 1

## OPERATIONAL EFFICIENCY

### Average per-pupil spending

District  
State

**Classroom**  
\$4,355  
\$4,497



**Nonclassroom**  
\$3,475  
\$3,411

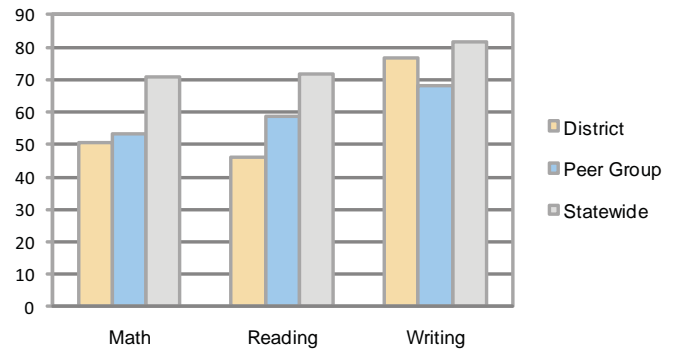
**Total**  
\$7,830  
\$7,908

### 5-year trend

Total spending per pupil increased by 7 percent. Spending in the classroom was very inconsistent year to year and decreased significantly overall from 62.7 to 55.6 percent. Spending on administration and food service increased significantly, while spending in other nonclassroom areas varied year to year.

## STUDENT ACHIEVEMENT AND TEACHER INFORMATION

### Percentage of students meeting state standards (AIMS)



### Adequate Yearly Progress (AYP) toward federal goals

The District's school met all applicable AYP objectives for NCLB.

### Student and teacher information

Measure	District	Peer average	State average
Attendance rate	95%	94%	95%
Graduation rate (2008)	N/A	73%	75%
Poverty rate	32%	30%	19%
Student/teacher ratio	15.8	14.2	17.1
Average teacher salary	\$40,334	\$41,521	\$45,209
Average years' experience	15.4	10.8	8.3
Percent of teachers in first 3 years	12%	23%	16%

### District's cost measures relative to peer group

Operational Area	Measure	District	Peer Average	State Average
Administration	Cost per pupil	\$986	\$1,288	\$729
	Students per administrator	64	70	66
Plant Operations	Cost per square foot	\$7.96	\$6.94	\$6.40
	Square footage per student	134	149	144
Food Service	Cost per meal equivalent	\$2.89	\$3.05	\$2.53
Transportation	Cost per mile	\$1.50	\$2.22	\$3.36
	Miles per rider	120	268	271

Very Low   Low   Comparable   High   Very High

### Per-pupil spending by function

	District		Peer	State	National
	2008	2009	2009	2009	2007
<b>Total</b>	<b>\$9,172</b>	<b>\$7,830</b>	<b>\$9,786</b>	<b>\$7,908</b>	<b>\$9,683</b>
<b>Classroom dollars</b>	<b>\$5,792</b>	<b>\$4,355</b>	<b>\$5,344</b>	<b>\$4,497</b>	<b>\$5,903</b>
<b>Nonclassroom dollars:</b>	<b>\$3,380</b>	<b>\$3,475</b>	<b>\$4,442</b>	<b>\$3,411</b>	<b>\$3,780</b>
Administration	798	986	1,288	729	1,050
Plant Operations	1,094	1,069	1,162	920	951
Food Service	542	560	582	382	369
Transportation	194	137	512	343	406
Student Support	160	138	586	594	512
Instruction Support	592	585	311	431	470
Other	0	0	1	12	22

### Proposition 301

#### Teacher pay

On average, each teacher earned a base pay increase of \$1,247. Fiscal year 2009 performance pay and menu monies were not paid out until fiscal year 2010.

#### Performance pay plan goals and results

Type of goal	Goal met?
Student achievement	☐
Dropout/ graduation rates	■
Student attendance	■
Parent/student satisfaction	■
Teacher attendance	■
Teacher professional development	■
Teacher evaluations	■
Tutoring	■
Other	▴

■ = yes, ☐ = no, and ▴ = partially