

Nadaburg Unified School District

Maricopa County
Operational peer group: E
Legislative districts: 4

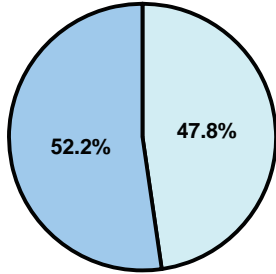
District size: Medium
Students attending: 892
Number of schools: 2

OPERATIONAL EFFICIENCY

Average per-pupil spending

District
State

Classroom
\$4,611
\$4,497



Nonclassroom
\$4,214
\$3,411

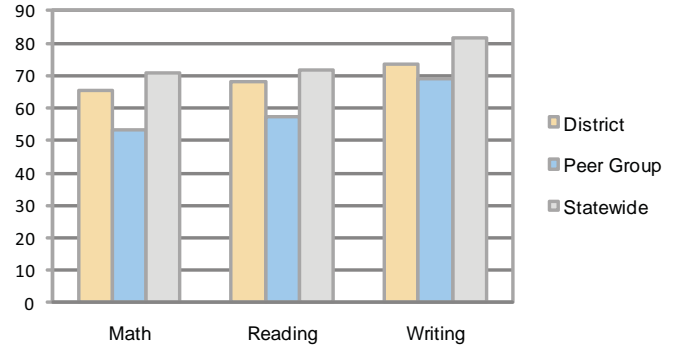
Total
\$8,825
\$7,908

5-year trend

Total spending per pupil increased by 17 percent. Spending in the classroom decreased significantly overall from 56.1 to 52.2 percent. Spending on administration, plant operations, and instruction support increased significantly, while spending in other nonclassroom areas varied year to year.

STUDENT ACHIEVEMENT AND TEACHER INFORMATION

Percentage of students meeting state standards (AIMS)



Adequate Yearly Progress (AYP) toward federal goals

1 school met all applicable AYP objectives for NCLB. 1 school did not have a sufficient attendance rate.

Student and teacher information

Measure	District	Peer average	State average
Attendance rate	95%	93%	95%
Graduation rate (2008)	N/A	70%	75%
Poverty rate	22%	31%	19%
Student/teacher ratio	17.1	14.9	17.1
Average teacher salary	\$45,331	\$41,086	\$45,209
Average years' experience	9.6	11.1	8.3
Percent of teachers in first 3 years	26%	20%	16%

District's cost measures relative to peer group

Operational Area	Measure	District	Peer Average	State Average
Administration	Cost per pupil	\$894	\$1,148	\$729
	Students per administrator	65	51	66
Plant Operations	Cost per square foot	\$6.08	\$5.49	\$6.40
	Square footage per student	191	253	144
Food Service	Cost per meal equivalent	\$2.70	\$3.07	\$2.53
Transportation	Cost per mile	\$2.07	\$2.53	\$3.36
	Miles per rider	412	359	271

Very Low Low Comparable High Very High

Proposition 301

Teacher pay

On average, each teacher earned an additional \$4,538 in salary, and each speech pathologist and counselor earned between \$3,450 and \$4,880.

Performance pay plan goals and results

Type of goal	Goal met?
Student achievement	■
Dropout/ graduation rates	■
Student attendance	■
Parent/student satisfaction	■
Teacher attendance	■
Teacher professional development	■
Teacher evaluations	■
Tutoring	■
Other	■

■ = yes, □ = no, and ▮ = partially

Per-pupil spending by function

	District		Peer	State	National
	2008	2009	2009	2009	2007
Total	\$8,619	\$8,825	\$9,562	\$7,908	\$9,683
Classroom dollars	\$4,462	\$4,611	\$4,925	\$4,497	\$5,903
Nonclassroom dollars:	\$4,157	\$4,214	\$4,637	\$3,411	\$3,780
Administration	966	894	1,148	729	1,050
Plant Operations	857	1,161	1,379	920	951
Food Service	436	484	444	382	369
Transportation	1,090	855	554	343	406
Student Support	565	518	749	594	512
Instruction Support	243	302	356	431	470
Other	0	0	7	12	22