

Nogales Unified School District

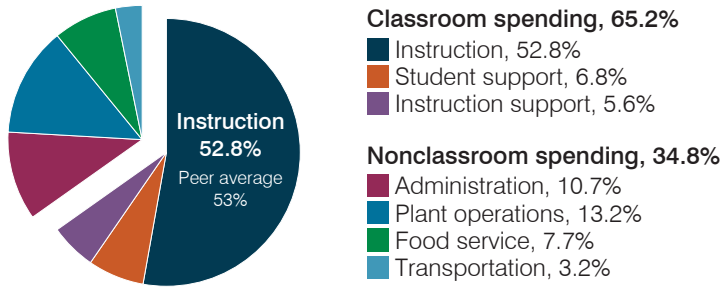
Santa Cruz County
 Peer groups: Operational 4 and T-6, Achievement 7¹
 Legislative district(s): 2
 District location: Town
 Number of schools: 10
 Graduation rate (2018): 92%

Students attending; Size: 5,534; Medium-large
 5-year change in students attending: 3% decrease
 Special education population: 9%
 English learner population: 17%
 Poverty rate (2018): 43%
 Free/reduced meal eligibility: 79%

Instructional spending percentage by year

2001	2002	2003	2004	2005	2006	2007	2008	2009	2010	2011	2012	2013	2014	2015	2016	2017	2018	2019
56.5	56.2	55.7	54.7	54.9	56.1	55.0	54.3	52.7	52.1	51.7	51.5	51.3	51.7	52.1	51.5	51.2	51.6	52.8

Spending by operational area



Operational measures relative to peer averages

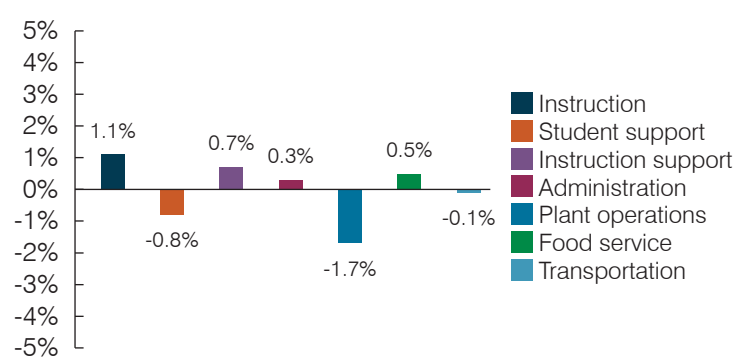
Operational area	Measure	District	Peer average	State average
Administration	Cost per pupil	\$881	\$899	\$903
	Students per administrative position	64	68	66
Plant operations	Cost per square foot	\$8.05	\$5.82	\$6.49
	Square footage per student	134	180	158
Food service	Cost per meal	\$3.42	\$3.28	\$3.08
Transportation	Cost per mile	\$5.22	\$4.23	\$4.29
	Cost per rider	\$879	\$768	\$1,424



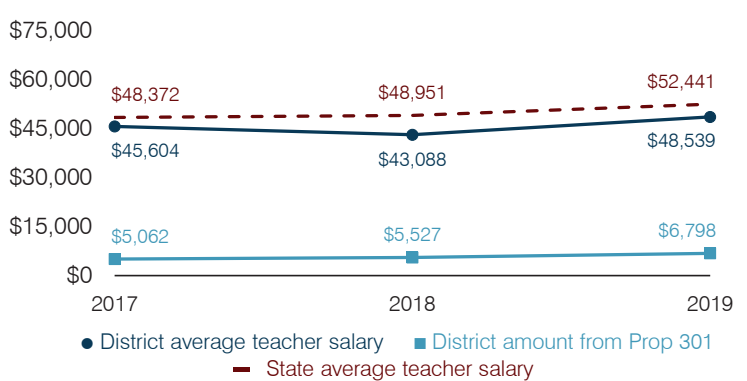
Per pupil spending

Spending by area	District		Peer average 2019	State average 2019
	2018	2019		
Instruction	\$ 3,847	\$ 4,322	\$ 4,516	\$ 4,869
Student support	544	555	713	754
Instruction support	422	458	496	497
Administration	755	881	899	903
Plant operations	1,002	1,078	1,029	1,027
Food service	637	627	438	438
Transportation	241	261	444	417
Total operational	7,448	8,182	8,535	8,905
Land and buildings	117	162	565	1,086
Equipment	301	428	453	496
Interest	0	0	173	261
Other	40	43	70	180
Total nonoperational	458	633	1,261	2,023
Total per pupil spending	\$ 7,906	\$ 8,815	\$ 9,796	\$ 10,928

Percentage point change in spending by operational area (fiscal year 2014 versus 2019)

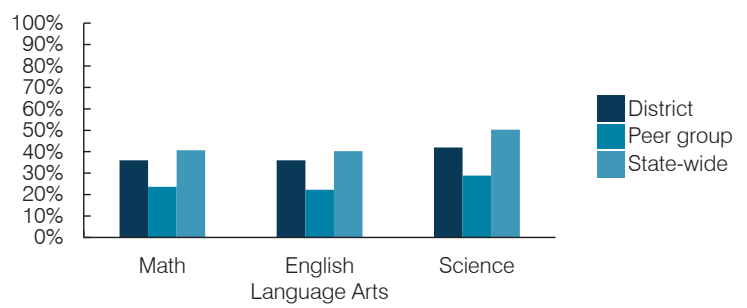


Average teacher salary and other measures



Measure	2017	2018	2019
Students per teacher	20.2	19.2	19.3
Average years of teacher experience	13.9	14.4	14.2
Percentage of teachers in first 3 years	14%	14%	14%

Students who passed State assessments²



¹ See Appendix A for information, such as districts included in each peer group, and Appendix B for sources and methodology.
² School letter grades are available at <https://azreportcards.azed.gov>.