

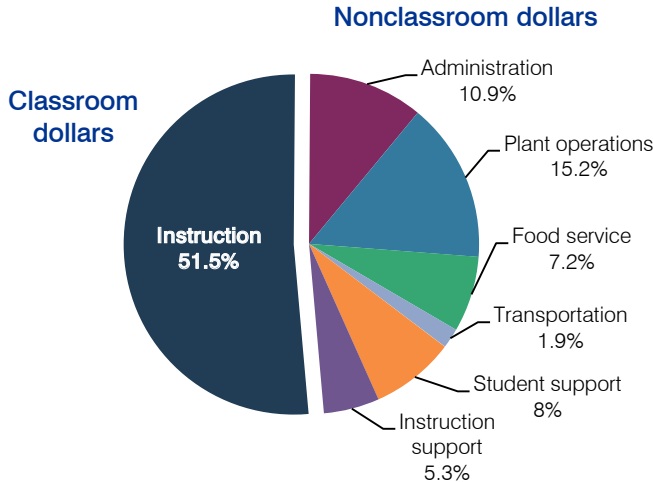
Nogales Unified School District

Santa Cruz County
 Efficiency peer groups 4 and T-6, Achievement peer group 7
 Legislative district(s): 2

District size / location: Medium-Large, Rural
 Students attending: 5,583
 Number of schools: 10

OPERATIONAL EFFICIENCY

Spending by operational area



5-year spending trend

After initially increasing, total spending per pupil returned to 2007 levels, but spending in the classroom was lower, decreasing from 55 to 51.5 percent. Overall, spending on administration, plant operations, food service, and instruction support increased, and spending on student support decreased substantially. Spending on transportation remained stable.

Cost measures relative to peer averages

Operational area	Measure	District	Peer average	State average
Administration	Cost per pupil	\$756	\$748	\$736
	Students per administrator	60	66	66
Plant operations	Cost per square foot	\$7.99	\$5.53	\$6.09
	Square footage per student	133	173	152
Food service	Cost per meal equivalent	\$3.18	\$2.56	\$2.47
Transportation	Cost per mile	\$2.69	\$3.84	\$3.50
	Cost per rider	\$171	\$416	\$982

Very low Low Comparable High Very high

Per-pupil spending by operational area

	District		Peer average	State average	National average
	2011	2012	2012	2012	2010
Total	\$7,178	\$6,952	\$7,007	\$7,475	\$10,652
Classroom dollars	3,715	3,579	3,682	4,053	6,526
Nonclassroom dollars:	3,463	3,373	3,325	3,422	4,126
Administration	776	756	748	736	1,139
Plant operations	1,068	1,060	933	928	1,012
Food service	496	498	354	382	405
Transportation	135	134	369	362	443
Student support	625	555	540	578	592
Instruction support	363	370	381	436	535

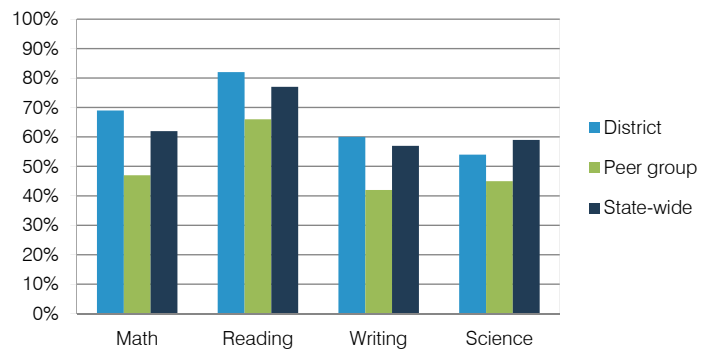
STUDENT ACHIEVEMENT, TEACHER MEASURES, AND FINANCIAL ASSESSMENT

ADE-reported district and school letter grades

District grade: **A**

Grade	Number of schools	Percentage of schools
A	6	60%
B	3	30%
C	0	0%
D	0	0%
F	0	0%
Not rated	1	10%

Percentage of students who met state standards (AIMS)



Student and teacher measures

Measure	District	Peer average	State average
Attendance rate	95%	93%	94%
Graduation rate (2011)	84%	76%	78%
Poverty rate (2011)	37%	40%	25%
Students per teacher	19.4	15.6	18.1
Average teacher salary	\$43,783	\$42,644	\$45,193
Amount from Proposition 301	\$2,516	\$3,127	\$3,195
Average years of teacher experience	13.7	13.0	11.0
Percentage of teachers in first 3 years	16%	13%	16%

Financial stress assessment

Overall financial stress level: **Moderate**

Measure: 2010 through 2012	Assessment
Number of students attending	Moderate decrease
Spending exceeded operating/capital budgets	No overspending
Spending increase election results	Voter-rejected
Operating reserve percentage (max. 4%), trend	3.6%, Varying
Years of capital reserve held	1 to 3 years
Current financial and internal control status	Compliant

