

# Owens-Whitney Elementary School District

Mohave County  
Operational peer group: L  
Legislative districts: 3

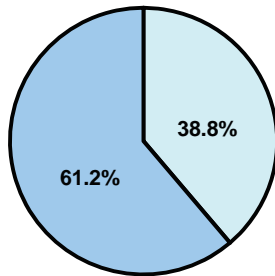
District size: Very Small  
Students attending: 31  
Number of schools: 1

## OPERATIONAL EFFICIENCY

### Average per-pupil spending

District  
State

Classroom  
**\$13,345**  
\$4,497



Nonclassroom  
**\$8,471**  
\$3,411

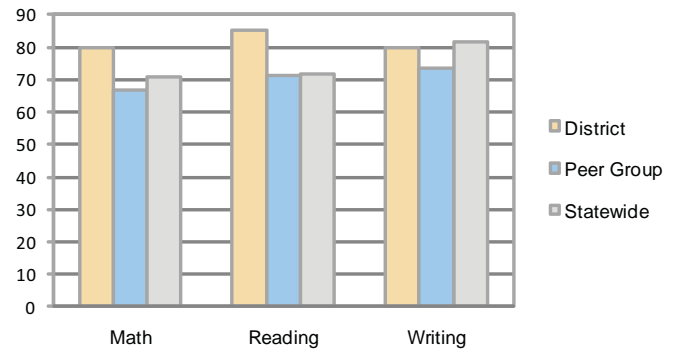
Total  
**\$21,816**  
\$7,908

### 5-year trend

Although student enrollment declined by only 5 percent, total spending per pupil increased by 66 percent. Spending in the classroom varied year to year and increased significantly overall from 53.7 to 61.2 percent. Spending on administration and student support decreased significantly, while spending in other nonclassroom areas varied from year to year.

## STUDENT ACHIEVEMENT AND TEACHER INFORMATION

### Percentage of students meeting state standards (AIMS)



### Adequate Yearly Progress (AYP) toward federal goals

The District's school met all applicable AYP objectives for NCLB.

### District's cost measures relative to peer group

Operational Area	Measure	District	Peer Average	State Average
Administration	Cost per pupil	\$2,346	\$2,656	\$729
	Students per administrator	31	32	66
Plant Operations	Cost per square foot	\$15.58	\$7.53	\$6.40
	Square footage per student	244	318	144
Food Service	Cost per meal equivalent	\$10.03	\$5.10	\$2.53
Transportation	Cost per mile	\$0.14	\$1.79	\$3.36
	Miles per rider	NR	710	271

Very Low   Low   Comparable   High   Very High

### Student and teacher information

Measure	District	Peer average	State average
Attendance rate	97%	94%	95%
Graduation rate (2008)	N/A	54%	75%
Poverty rate	26%	31%	19%
Student/teacher ratio	15.3	10.8	17.1
Average teacher salary	N/A	\$45,165	\$45,209
Average years' experience	25.5	12.7	8.3
Percent of teachers in first 3 years	0%	15%	16%

### Proposition 301

#### Teacher pay

On average, each teacher earned an additional \$5,834 in salary.

### Performance pay plan goals and results

Type of goal	Goal met?
Student achievement	▲
Dropout/ graduation rates	■
Student attendance	■
Parent/student satisfaction	■
Teacher attendance	■
Teacher professional development	■
Teacher evaluations	■
Tutoring	■
Other	■

■ = yes, □ = no, and ▲ = partially

### Per-pupil spending by function

	District		Peer	State	National
	2008	2009	2009	2009	2007
<b>Total</b>	<b>\$19,160</b>	<b>\$21,816</b>	<b>\$16,311</b>	<b>\$7,908</b>	<b>\$9,683</b>
<b>Classroom dollars</b>	<b>\$11,819</b>	<b>\$13,345</b>	<b>\$8,757</b>	<b>\$4,497</b>	<b>\$5,903</b>
<b>Nonclassroom dollars:</b>	<b>\$7,341</b>	<b>\$8,471</b>	<b>\$7,554</b>	<b>\$3,411</b>	<b>\$3,780</b>
Administration	2,146	2,346	2,656	729	1,050
Plant Operations	3,052	3,797	2,297	920	951
Food Service	1,524	1,847	859	382	369
Transportation	229	271	930	343	406
Student Support	101	8	474	594	512
Instruction Support	289	202	338	431	470
Other	0	0	0	12	22