

# Classroom Dollars and Proposition 301 Results

## Owens-Whitney Elementary School District

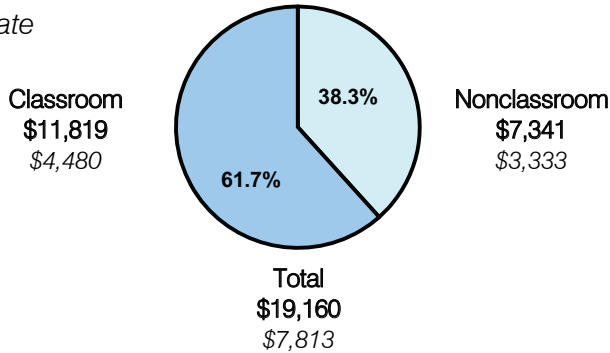
Mohave County

District size: Very Small  
 Students attending: 32  
 Number of schools: 1  
 Number of certified teachers: 3

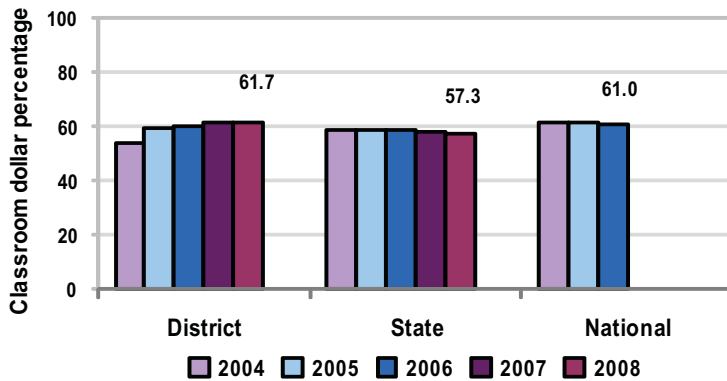
### Classroom Dollars

Fiscal year 2008 averages per pupil

District  
 State



5-year comparison



### Expenditures by function

	District					State 2008	National 2006
	2004	2005	2006	2007	2008		
Classroom dollars	53.7	59.6	60.2	61.4	61.7	57.3	61.0
Nonclassroom dollars:							
Administration	14.3	11.4	11.9	13.0	11.2	9.2	10.8
Plant operations	18.3	15.0	14.6	13.6	15.9	11.3	9.9
Food service	9.0	8.3	8.3	7.4	8.0	4.8	3.8
Transportation	1.7	1.7	1.8	2.1	1.2	4.4	4.2
Student support	2.1	2.4	2.2	0.7	0.5	7.4	5.2
Instruction support	0.9	1.6	1.0	1.8	1.5	5.4	4.9
Other						0.2	0.2

### Comparative Information

	District			State 2008
	2006	2007	2008	
Student/teacher ratio	10.1	10.1	10.7	17.3
Average teacher salary	\$46,646	\$62,800	\$56,495	\$44,967
Average years' experience	12.3	12.7	13.0	8.1

Classroom dollar ranking: 19 of 230 districts.

### Proposition 301

#### District-reported 2008 results

##### Teacher pay

- On average, each teacher earned an additional \$2,772 in salary.

##### Performance

- The District accomplished most of its goals, which were similar to the prior fiscal year's goals and were based on school and individual performance.
- 6 of the 10 goals related to student achievement were met, which included requiring students to read a certain number of non-fiction books, meet or exceed state standards on the 3 parts of the AIMS test, and set their own achievement goals.
- Teachers participated in 2 professional development activities, and received acceptable ratings from parents.
- 90 percent of parents attended 4 major activities throughout the school year.

##### Menu

- Monies were used solely to increase teacher compensation.