

Classroom Dollars and Proposition 301 Results

Owens-Whitney Elementary School District

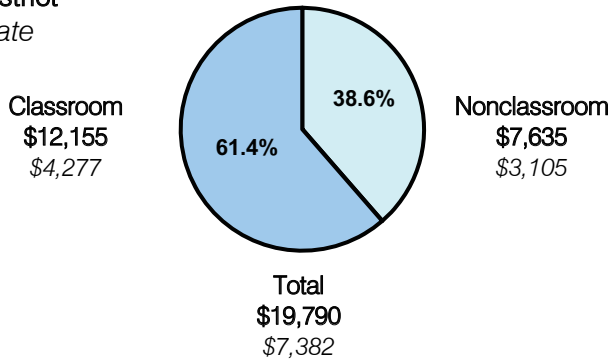
Mohave County

District size: Very Small
 Students attending: 30
 Number of schools: 1
 Number of certified teachers: 3

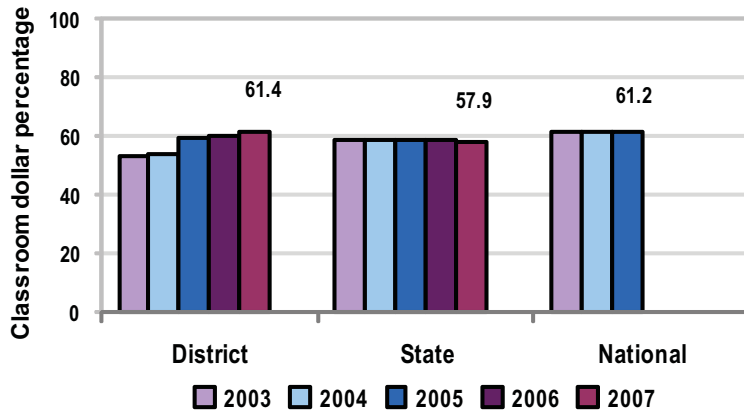
Classroom Dollars

Fiscal year 2007 averages per pupil

District
 State



5-year comparison



Expenditures by function

	District					State 2007	National 2005
	2003	2004	2005	2006	2007		
Classroom dollars	53.0	53.7	59.6	60.2	61.4	57.9	61.2
Nonclassroom dollars:							
Administration	14.0	14.3	11.4	11.9	13.0	9.5	11.0
Plant operations	18.2	18.3	15.0	14.6	13.6	11.3	9.6
Food service	9.2	9.0	8.3	8.3	7.4	4.7	3.9
Transportation	1.4	1.7	1.7	1.8	2.1	4.3	4.1
Student support	2.9	2.1	2.4	2.2	0.7	7.3	5.2
Instruction support	1.3	0.9	1.6	1.0	1.8	4.8	4.8
Other						0.2	0.2

Comparative Information

	District			State 2007
	2005	2006	2007	
Student/teacher ratio	8.9	10.1	10.1	17.4
Average teacher salary	\$43,986	\$46,646	\$62,800	\$43,833
Average years' experience	12.0	12.3	12.7	8.1

Classroom dollar ranking: 25 of 229 districts.

Proposition 301

District-reported 2007 results

Teacher pay

- On average, each teacher earned an additional \$4,562 in salary.

Performance

- The District accomplished most of its goals, which were based on school and individual performance.
- 9 of the 10 goals related to student achievement were met, which included requiring students to read a certain number of non-fiction books, meet or exceed state standards on the 3 parts of the AIMS test, and set their own achievement goals.
- Teachers had to participate in 2 professional development activities and share the information with other teachers.
- Other goals were linked to parent-student satisfaction, school site goals, and teacher job satisfaction.

Menu

- Monies were used solely to increase teacher compensation.