

Page Unified School District

Coconino County

Efficiency peer groups 4 and T-10, Achievement peer group 6¹

Legislative district(s): 7

District size, location: Medium-large, Town

Students attending: 2,574

Number of schools: 4

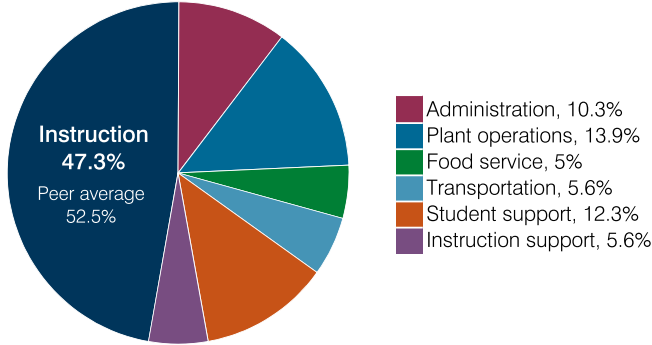
Medium-large, Town

2,574

4

OPERATIONAL EFFICIENCY

Spending by operational area



Efficiency measures relative to peer averages

Operational area	Measure	District	Peer average	State average
Administration	Cost per pupil	\$1,056	\$837	\$860
	Students per administrative position	55	69	66
Plant operations	Cost per square foot	\$5.75	\$5.61	\$6.34
	Square footage per student	248	184	156
Food service	Cost per meal	\$2.86	\$3.16	\$3.02
Transportation	Cost per mile	\$2.84	\$1.95	\$4.05
	Cost per rider	\$2,056	\$1,572	\$1,301

Very low Low Comparable High Very high

Per pupil spending

Spending by area	District		Peer average 2018	State average 2018
	2017	2018		
Instruction	\$ 4,107	\$ 4,847	\$ 4,194	\$ 4,480
Administration	937	1,056	837	860
Plant operations	1,351	1,424	1,004	988
Food service	453	516	421	425
Transportation	524	583	418	388
Student support	1,188	1,258	643	693
Instruction support	616	570	480	462
Total operational	9,176	10,254	7,997	8,296
Land and buildings	302	289	570	827
Equipment	344	318	389	409
Interest	6	7	200	228
Other	156	4	69	169
Total nonoperational	808	618	1,228	1,633
Total per pupil spending	\$ 9,984	\$ 10,872	\$ 9,225	\$ 9,929

¹ See Appendix A for information such as districts included in each peer group and Appendix B for sources and methodology.

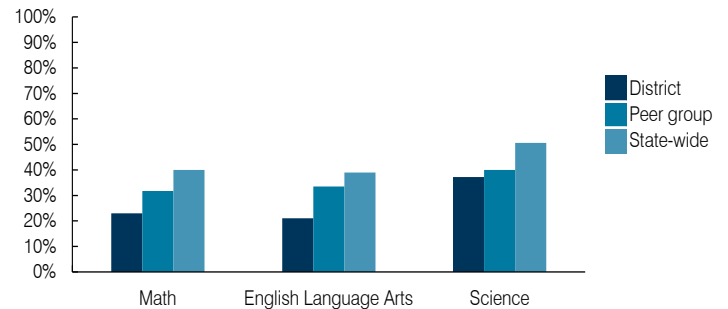
STUDENT ACHIEVEMENT, STUDENT AND TEACHER MEASURES, AND REVENUES

ADE-assigned school letter grades

Grade	Number of schools ²	Percentage of schools
A	0	0%
B	0	0%
C	1	33%
D	2	67%
F	0	0%

² Excludes schools for which letter grades were not published by ADE. See Appendix B for more information.

Students who passed State assessments



Student and teacher measures

Measure	District	Peer average	State average
Attendance rate	91%	93%	94%
Graduation rate (2017)	77%	85%	78%
Poverty rate (2017)	27%	29%	19%
Special education population	14%	14%	12%
Students per teacher	17.3	16.2	18.4
Average teacher salary	\$47,229	\$46,264	\$48,951
Amount from Prop 301	\$5,869	\$6,122	\$6,411
Average years of teacher experience	9.1	12.2	11.4
Percentage of teachers in first 3 years	23%	20%	19%

Per pupil revenues

Revenues by source	District		Peer average 2018	State average 2018
	2017	2018		
Federal	\$ 4,010	\$ 3,945	\$ 2,385	\$ 1,317
State	3,028	3,240	4,222	4,011
Local	3,939	3,850	3,291	4,592
Total per pupil revenues	\$ 10,977	\$ 11,035	\$ 9,898	\$ 9,920

Select revenues from common sources

Source	District	Peer average	State average
Equalization formula funding	\$ 5,506	\$ 5,505	\$ 5,443
Grants	1,900	2,019	1,552
Donations and tax credits	31	22	63

Select revenues from less common sources

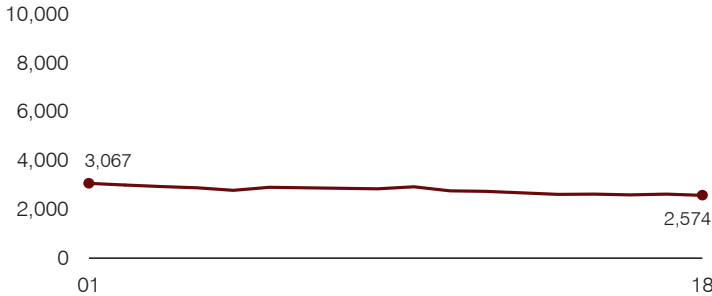
Source	District	Peer average	Number of peers receiving
Desegregation	\$ 0	\$ 0	1 of 17
Small school adjustment	0	0	0 of 17
Federal impact aid	2,358	2,238	6 of 17
Voter-approved levy increases	0	0	13 of 17

Instructional spending percentage

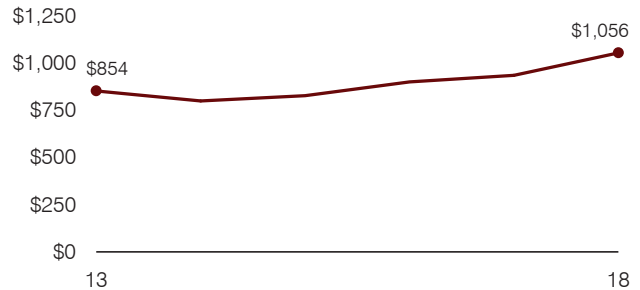
Year: 2001 2002 2003 2004 2005 2006 2007 2008 2009 2010 2011 2012 2013 2014 2015 2016 2017 2018
 Percentage: 56.5 54.8 54.8 53.0 51.3 54.8 53.1 52.5 52.3 51.3 49.1 49.4 49.6 49.1 48.7 49.2 44.8 47.3

TRENDS AND FINANCIAL STRESS ASSESSMENT
 Fiscal years as indicated

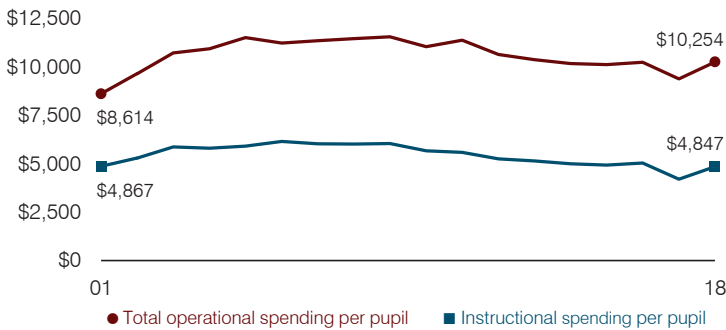
Students attending



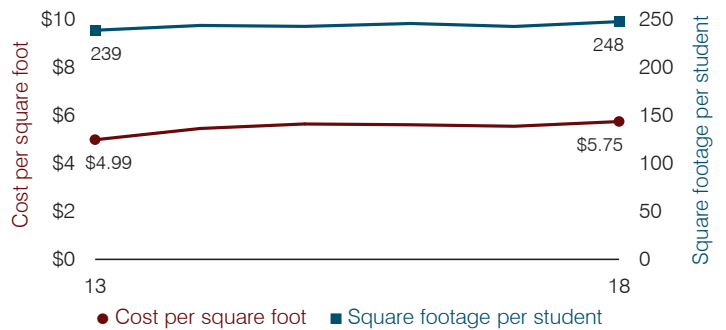
Administrative cost per pupil



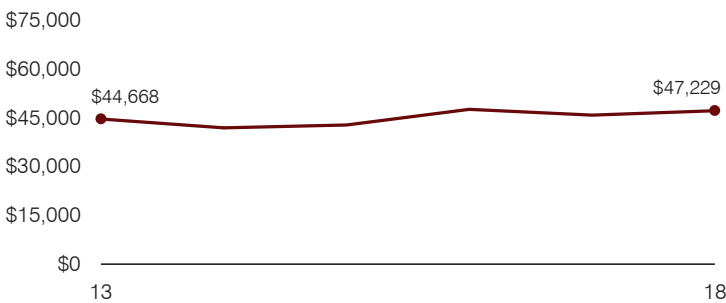
Total operational and instructional spending per pupil (inflation adjusted to 2018 dollars)



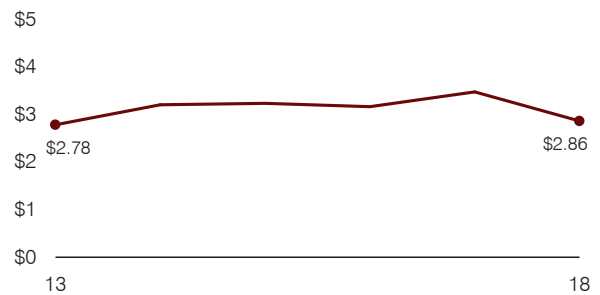
Plant cost per square foot and square footage per student



Average teacher salary



Food service cost per meal



Financial stress assessment

Overall financial stress level: **Low**

Measure: 2016 through 2018	Assessment
Change in number of district students	Steady
Spending exceeded operating/capital budgets	No overspending
Spending increase election results	No election held
Operating reserve percentage, Trend	5.5%, Increasing
Years of capital reserve held	Impact Aid Fund reserve
Current financial and internal control status	Compliant

Low
Moderate
High

Transportation costs per mile and per rider

