

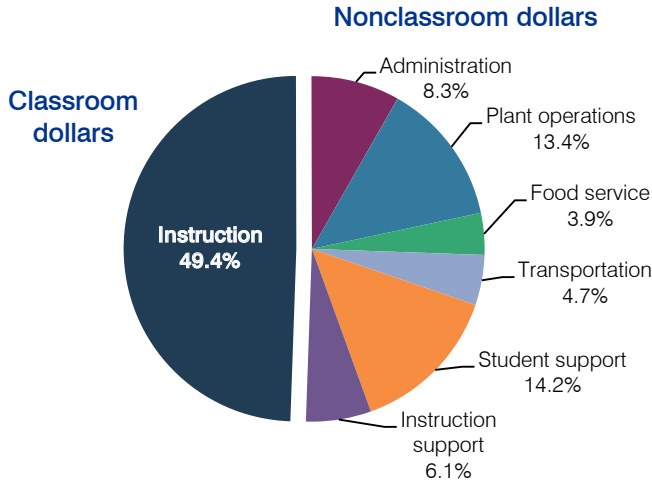
Page Unified School District

Coconino County
 Efficiency peer groups 4 and T-10, Achievement peer group 6
 Legislative district(s): 7

District size / location: Medium-Large, Town
 Students attending: 2,734
 Number of schools: 4

OPERATIONAL EFFICIENCY

Spending by operational area



5-year spending trend

Total spending per pupil increased by 5 percent. Spending in the classroom decreased from 53.1 to 49.4 percent. Spending on administration decreased and spending on plant operations, transportation, and student support increased. Spending on other nonclassroom areas remained fairly stable.

Cost measures relative to peer averages

Operational area	Measure	District	Peer average	State average
Administration	Cost per pupil	\$815	\$748	\$736
	Students per administrator	45	66	66
Plant operations	Cost per square foot	\$5.61	\$5.53	\$6.09
	Square footage per student	233	173	152
Food service	Cost per meal equivalent	\$2.49	\$2.56	\$2.47
Transportation	Cost per mile	\$1.98	\$2.26	\$3.50
	Cost per rider	\$812	\$935	\$982

Very low Low Comparable High Very high

Per-pupil spending by operational area

	District		Peer average	State average	National average
	2011	2012	2012	2012	2010
Total	\$10,140	\$9,763	\$7,007	\$7,475	\$10,652
Classroom dollars	4,976	4,818	3,682	4,053	6,526
Nonclassroom dollars:	5,164	4,945	3,325	3,422	4,126
Administration	732	815	748	736	1,139
Plant operations	1,304	1,310	933	928	1,012
Food service	450	385	354	382	405
Transportation	465	456	369	362	443
Student support	1,509	1,383	540	578	592
Instruction support	704	596	381	436	535

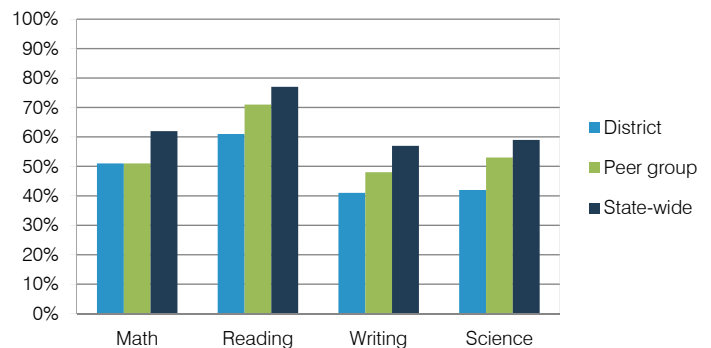
STUDENT ACHIEVEMENT, TEACHER MEASURES, AND FINANCIAL ASSESSMENT

ADE-reported district and school letter grades

District grade: **C**

Grade	Number of schools	Percentage of schools
A	0	0%
B	0	0%
C	3	75%
D	1	25%
F	0	0%
Not rated	0	0%

Percentage of students who met state standards (AIMS)



Student and teacher measures

Measure	District	Peer average	State average
Attendance rate	93%	94%	94%
Graduation rate (2011)	73%	80%	78%
Poverty rate (2011)	32%	31%	25%
Students per teacher	16.1	15.2	18.1
Average teacher salary	\$47,618	\$40,242	\$45,193
Amount from Proposition 301	\$3,324	\$3,191	\$3,195
Average years of teacher experience	10.3	12.0	11.0
Percentage of teachers in first 3 years	18%	16%	16%

Financial stress assessment

Overall financial stress level: **Low**

Measure: 2010 through 2012	Assessment
Number of students attending	Moderate decrease
Spending exceeded operating/capital budgets	No overspending
Spending increase election results	Voter-rejected
Operating reserve percentage (max. 4%), trend	Impact Aid Fund reserve
Years of capital reserve held	Impact Aid Fund reserve
Current financial and internal control status	Compliant

Stress level: **Low** **Moderate** **High**