

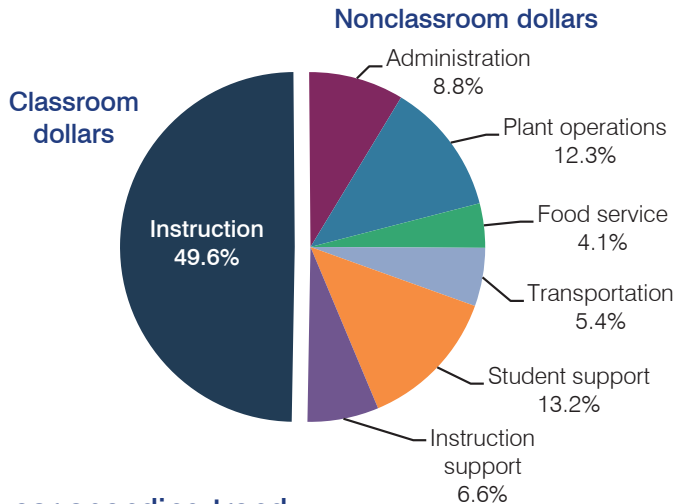
# Page Unified School District

Coconino County  
 Efficiency peer groups 4 and T-9, Achievement peer group 6  
 Legislative district(s): 7

District size, location: Medium-Large, Town  
 Students attending: 2,674  
 Number of schools: 4

## OPERATIONAL EFFICIENCY

### Spending by operational area



### 5-year spending trend

Total spending per pupil decreased by 1 percent. Spending in the classroom decreased from 52.5 to 49.6 percent. Overall, spending on administration and transportation increased. Spending on other nonclassroom areas varied year to year.

### Cost measures relative to peer averages

Operational area	Measure	District	Peer average	State average
Administration	Cost per pupil	\$854	\$764	\$746
	Students per administrator	61	67	67
Plant operations	Cost per square foot	\$4.99	\$5.34	\$6.03
	Square footage per student	239	176	153
Food service	Cost per meal equivalent	\$2.78	\$2.67	\$2.58
Transportation	Cost per mile	\$2.28	\$2.42	\$3.55
	Cost per rider	\$943	\$1,013	\$1,015

Very low Low Comparable High Very high

### Per pupil spending by operational area

	District		Peer average	State average	National average
	2012	2013	2013	2013	2011
<b>Total</b>	<b>\$9,763</b>	<b>\$9,673</b>	<b>\$7,187</b>	<b>\$7,496</b>	<b>\$10,658</b>
<b>Classroom dollars</b>	<b>4,818</b>	<b>4,801</b>	<b>3,779</b>	<b>4,031</b>	<b>6,520</b>
<b>Nonclassroom dollars:</b>	<b>4,945</b>	<b>4,872</b>	<b>3,408</b>	<b>3,465</b>	<b>4,138</b>
Administration	815	854	764	746	1,138
Plant operations	1,310	1,190	921	924	1,015
Food service	385	397	364	396	412
Transportation	456	520	394	369	452
Student support	1,383	1,274	561	582	593
Instruction support	596	637	404	448	528

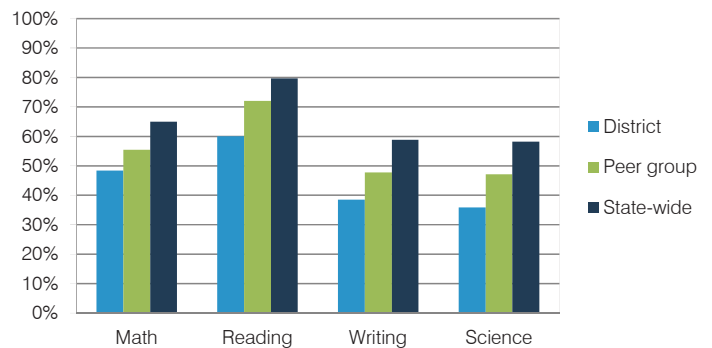
## STUDENT ACHIEVEMENT, TEACHER MEASURES, AND FINANCIAL ASSESSMENT

### ADE-reported district and school letter grades

District grade: **C**

Grade	Number of schools	Percentage of schools
A	0	0%
B	0	0%
C	2	50%
D	2	50%
F	0	0%
Not rated	0	0%

### Students who met state standards (AIMS)



### Student and teacher measures

Measure	District	Peer average	State average
Attendance rate	93%	93%	94%
Graduation rate (2012)	78%	80%	77%
Poverty rate (2012)	32%	33%	25%
Students per teacher	16.1	15.3	18.3
Average teacher salary	\$44,668	\$43,207	\$45,264
Amount from Proposition 301	\$3,706	\$3,525	\$3,784
Average years of teacher experience	10.1	11.9	10.9
Percentage of teachers in first 3 years	19%	20%	19%

### Financial stress assessment

Overall financial stress level: **Low**

Measure: 2011 through 2013

Measure	Assessment
Number of students attending district	Moderate decrease
Spending exceeded operating/capital budgets	No overspending
Spending increase election results	Voter-rejected
Operating reserve percentage (max. 4%), trend	Impact Aid Fund reserve
Years of capital reserve held	Impact Aid Fund reserve
Current financial and internal control status	Compliant

Stress level

