

Page Unified School District

Coconino County
Operational peer group: D
Legislative districts: 2, 3

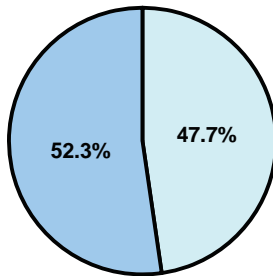
District size: Medium-Large
Students attending: 2,845
Number of schools: 4

OPERATIONAL EFFICIENCY

Average per-pupil spending

District
State

Classroom
\$5,228
\$4,497



Nonclassroom
\$4,767
\$3,411

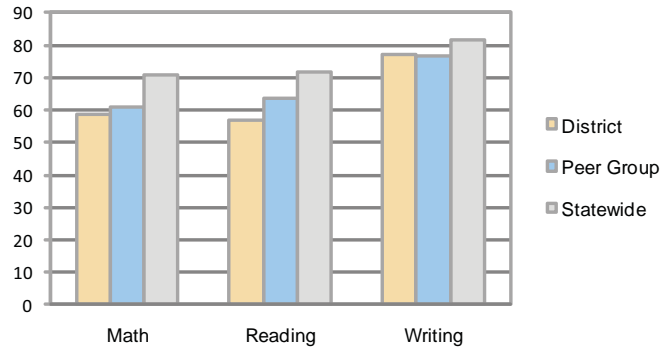
Total
\$9,995
\$7,908

5-year trend

Total spending per pupil increased by 22 percent. Spending in the classroom was very inconsistent year to year and decreased overall from 53 to 52.3 percent. Spending on student support increased significantly, spending on plant operations decreased significantly, and spending in other areas varied year to year.

STUDENT ACHIEVEMENT AND TEACHER INFORMATION

Percentage of students meeting state standards (AIMS)



Adequate Yearly Progress (AYP) toward federal goals

4 schools did not meet all applicable AYP objectives for NCLB because they failed to meet 1 of the following objectives: percentage of students tested (1); academic progress (3).

Student and teacher information

Measure	District	Peer average	State average
Attendance rate	94%	94%	95%
Graduation rate (2008)	81%	75%	75%
Poverty rate	22%	29%	19%
Student/teacher ratio	16.0	17.6	17.1
Average teacher salary	\$49,870	\$44,586	\$45,209
Average years' experience	11.2	10.4	8.3
Percent of teachers in first 3 years	13%	23%	16%

District's cost measures relative to peer group

Operational Area	Measure	District	Peer Average	State Average
Administration	Cost per pupil	\$742	\$775	\$729
	Students per administrator	52	61	66
Plant Operations	Cost per square foot	\$5.60	\$6.13	\$6.40
	Square footage per student	224	168	144
Food Service	Cost per meal equivalent	\$2.72	\$2.64	\$2.53
Transportation	Cost per mile	\$1.87	\$2.96	\$3.36
	Miles per rider	383	307	271

Very Low Low Comparable High Very High

Per-pupil spending by function

	District		Peer	State	National
	2008	2009	2009	2009	2007
Total	\$9,781	\$9,995	\$7,896	\$7,908	\$9,683
Classroom dollars	\$5,136	\$5,228	\$4,312	\$4,497	\$5,903
Nonclassroom dollars:	\$4,645	\$4,767	\$3,584	\$3,411	\$3,780
Administration	744	742	775	729	1,050
Plant Operations	1,251	1,255	1,032	920	951
Food Service	428	418	365	382	369
Transportation	383	402	397	343	406
Student Support	1,200	1,403	629	594	512
Instruction Support	618	534	380	431	470
Other	21	13	6	12	22

Proposition 301

Teacher pay

On average, each teacher, librarian, speech pathologist, counselor, dean, gifted coordinator, program evaluator, CTE director, and district liaison earned between \$2,260 and \$7,349 in additional pay.

Performance pay plan goals and results

Type of goal	Goal met?
Student achievement	■
Dropout/ graduation rates	
Student attendance	
Parent/student satisfaction	
Teacher attendance	
Teacher professional development	
Teacher evaluations	
Tutoring	■
Other	▲

■ = yes, □ = no, and ▲ = partially