

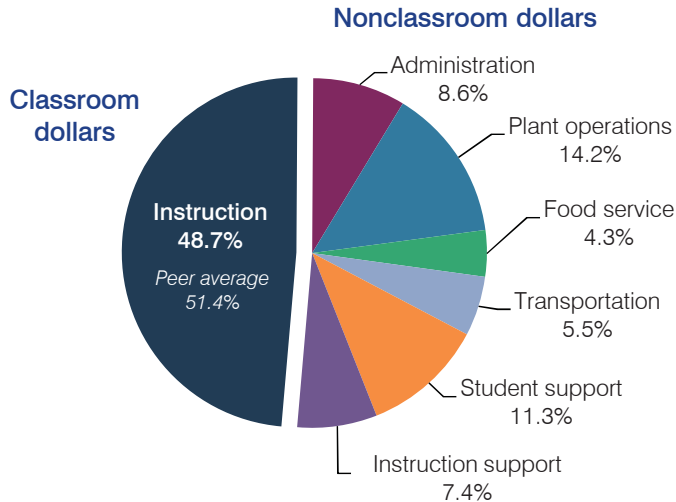
# Page Unified School District

Coconino County  
 Efficiency peer groups 4 and T-9, Achievement peer group 5  
 Legislative district(s): 7

District size, location: Medium-large, Town  
 Students attending: 2,621  
 Number of schools: 4

## OPERATIONAL EFFICIENCY

### Spending by operational area



### Efficiency measures relative to peer averages

| Operational area | Measure                              | District | Peer average | State average |
|------------------|--------------------------------------|----------|--------------|---------------|
| Administration   | Cost per pupil                       | \$829    | \$798        | \$780         |
|                  | Students per administrative position | 55       | 65           | 67            |
| Plant operations | Cost per square foot                 | \$5.65   | \$5.52       | \$6.09        |
|                  | Square footage per student           | 243      | 191          | 153           |
| Food service     | Cost per meal equivalent             | \$3.23   | \$2.80       | \$2.79        |
| Transportation   | Cost per mile                        | \$2.33   | \$2.13       | \$3.66        |
|                  | Cost per rider                       | \$1,835  | \$958        | \$1,071       |

Very low (Green) | Low (Blue) | Comparable (Yellow) | High (Orange) | Very high (Red)

### Per pupil spending

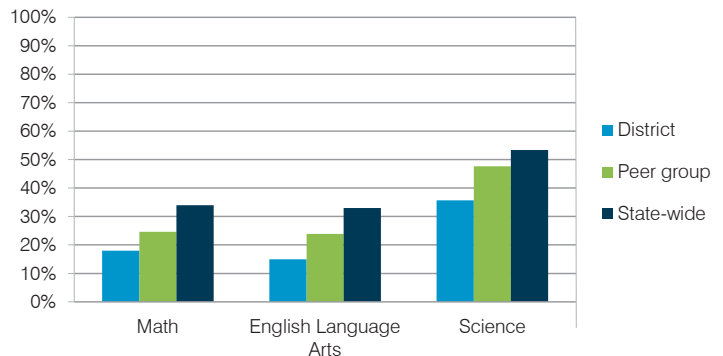
| Spending by area                | District         |                  | Peer average    | State average   |
|---------------------------------|------------------|------------------|-----------------|-----------------|
|                                 | 2014             | 2015             | 2015            | 2015            |
| Instruction                     | \$ 4,732         | \$ 4,697         | \$ 3,941        | \$ 4,105        |
| Administration                  | 801              | 829              | 798             | 780             |
| Plant operations                | 1,334            | 1,375            | 1,045           | 930             |
| Food service                    | 423              | 420              | 419             | 417             |
| Transportation                  | 414              | 534              | 411             | 371             |
| Student support                 | 1,186            | 1,088            | 597             | 613             |
| Instruction support             | 747              | 709              | 479             | 442             |
| <b>Total operational</b>        | <b>\$ 9,637</b>  | <b>\$ 9,652</b>  | <b>\$ 7,690</b> | <b>\$ 7,658</b> |
| Land and buildings              | \$ 683           | \$ 518           | \$ 382          | \$ 641          |
| Equipment                       | 519              | 435              | 281             | 383             |
| Interest                        | 291              | 114              | 200             | 225             |
| Other                           | 49               | 177              | 59              | 150             |
| <b>Total nonoperational</b>     | <b>\$ 1,542</b>  | <b>\$ 1,244</b>  | <b>\$ 922</b>   | <b>\$ 1,399</b> |
| <b>Total per pupil spending</b> | <b>\$ 11,179</b> | <b>\$ 10,896</b> | <b>\$ 8,612</b> | <b>\$ 9,057</b> |

## STUDENT AND TEACHER MEASURES, FINANCIAL ASSESSMENT, AND REVENUE

### Student and teacher measures

| Measure                                 | District | Peer average | State average |
|---|----------|--------------|---------------|
| Attendance rate                         | 92%      | 94%          | 94%           |
| Graduation rate (2014)                  | 73%      | 81%          | 76%           |
| Poverty rate (2014)                     | 25%      | 24%          | 23%           |
| Students per teacher                    | 15.8     | 16.7         | 18.6          |
| Average teacher salary                  | \$42,861 | \$43,855     | \$46,008      |
| Average years of teacher experience     | 8.8      | 12.3         | 11.0          |
| Percentage of teachers in first 3 years | 32%      | 18%          | 20%           |

### Students who met state standards



### Financial stress assessment

Overall financial stress level: **Low**

| Measure: 2013 through 2015                    | Assessment              |
|---|-------------------------|
| Change in number of district students         | Steady                  |
| Spending exceeded operating/capital budgets   | No overspending         |
| Spending increase election results            | No election held        |
| Operating reserve percentage (max. 4%), trend | Impact Aid Fund reserve |
| Years of capital reserve held                 | Impact Aid Fund reserve |
| Current financial and internal control status | Compliant               |

Low (Green) | Moderate (Yellow) | High (Red)

### Per pupil revenues

| Revenues by source                              | District         |                  | Peer average    | State average   |
|---|------------------|------------------|-----------------|-----------------|
|   | 2014             | 2015             | 2015            | 2015            |
| Federal   | \$ 4,101         | \$ 4,680         | \$ 2,889        | \$ 1,299        |
| State   | 3,177            | 2,817            | 3,860           | 3,517           |
| Local   | 4,389            | 4,437            | 2,930           | 4,248           |
| <b>Total revenues per pupil</b>                 | <b>\$ 11,667</b> | <b>\$ 11,934</b> | <b>\$ 9,679</b> | <b>\$ 9,064</b> |
| <b>Select revenues from common sources</b>      |                  |                  |                 |                 |
| Equalization formula funding                    | \$ 5,665         | \$ 5,330         | \$ 5,185        | \$ 5,303        |
| Grants  | 2,046            | 1,952            | 1,573           | 1,167           |
| Donations and tax credits                       | 33               | 26               | 48              | 78              |
| <b>Select revenues from less common sources</b> |                  |                  |                 |                 |
| Desegregation                                   | \$ 0             | \$ 0             | 1 of 18         |                 |
| Small school adjustment                         | 0                | 0                | 0 of 18         |                 |
| Federal impact aid                              | 2,486            | 3,051            | 7 of 18         |                 |
| Voter-approved levy increases                   | 344              | 111              | 15 of 18        |                 |

# Page USD—page 2

## Classroom dollar percentage

| Year:       | 2001 | 2002 | 2003 | 2004 | 2005 | 2006 | 2007 | 2008 | 2009 | 2010 | 2011 | 2012 | 2013 | 2014 | 2015 |
|-------------|------|------|------|------|------|------|------|------|------|------|------|------|------|------|------|
| Percentage: | 56.5 | 54.8 | 54.8 | 53.0 | 51.3 | 54.8 | 53.1 | 52.5 | 52.3 | 51.3 | 49.1 | 49.4 | 49.6 | 49.1 | 48.7 |

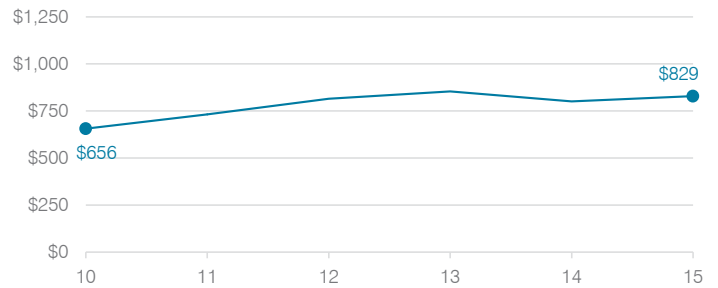
### OPERATIONAL TRENDS

Fiscal years as indicated

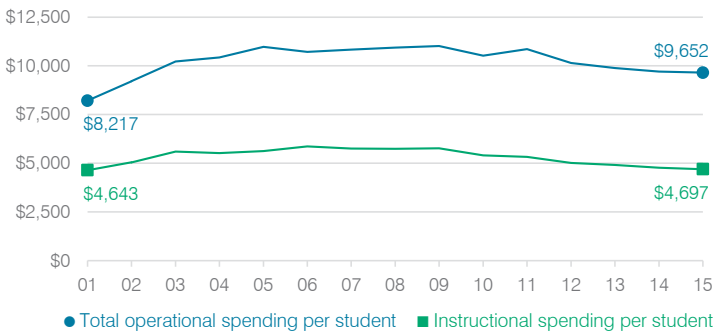
#### 5-year spending trend (2010 through 2015)

Total operational spending per pupil, adjusted for inflation, decreased by 8 percent. The percentage of dollars spent in the classroom decreased from 51.3 to 48.7 percent. As a percentage of total operational spending, administration, plant operations, and instruction support increased, while student support decreased substantially. Transportation varied year to year and food service remained fairly stable.

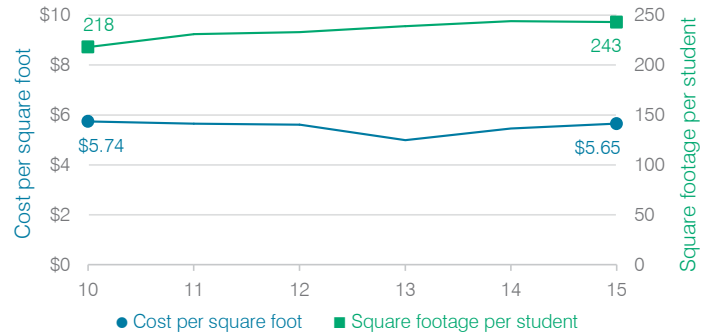
#### Administrative cost per student



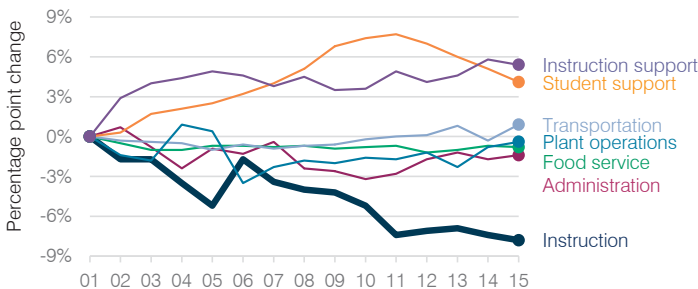
#### Total operational and instructional spending per student (inflation adjusted to 2015 dollars)



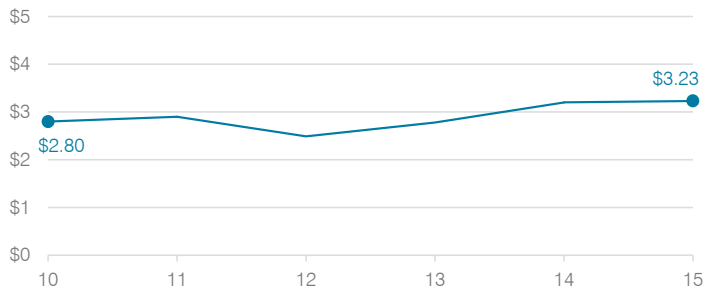
#### Plant cost per square foot and square footage per student



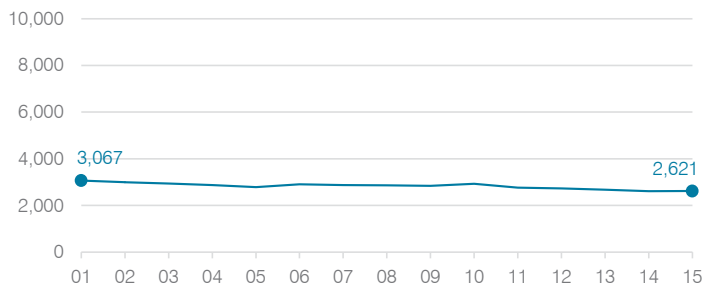
#### Changes in operational spending percentages



#### Food service cost per meal



#### Students attending



#### Transportation costs per mile and per rider

