

# Classroom Dollars and Proposition 301 Results

## Palo Verde Elementary School District

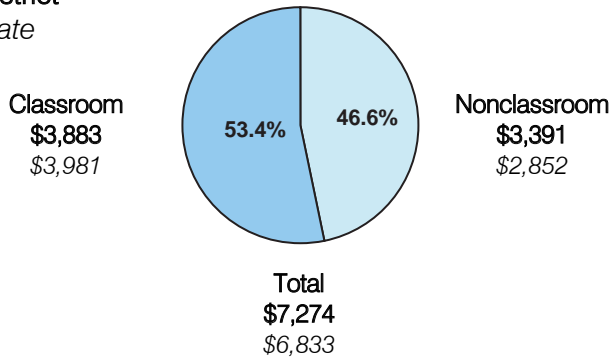
Maricopa County

District size: Small  
 Students attending: 379  
 Number of schools: 1  
 Number of certified teachers: 20

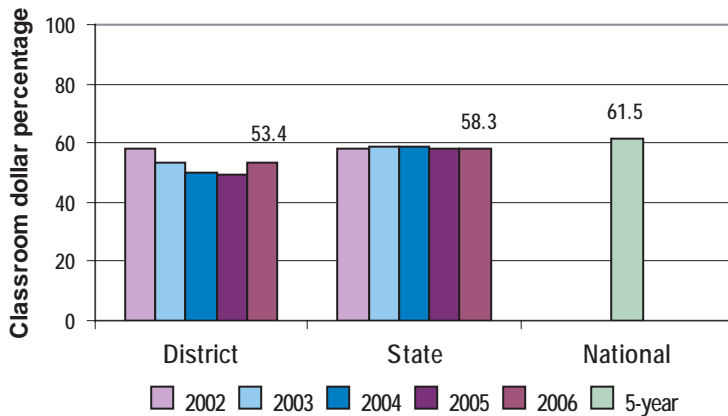
### Classroom Dollars

Fiscal year 2006 averages per pupil

District  
 State



### 5-year comparison



### Expenditures by function

	District					State 2006	National 5-year
	2002	2003	2004	2005	2006		
Classroom dollars	58.3	53.7	49.9	49.6	53.4	58.3	61.5
Nonclassroom dollars:							
Administration	13.1	15.8	15.8	15.7	15.0	9.4	11.0
Plant operations	11.1	11.8	12.1	12.5	11.2	11.2	9.6
Food service	6.8	6.1	6.6	6.5	6.2	4.7	3.9
Transportation	6.1	6.0	6.8	6.8	6.5	4.2	4.0
Student support	1.0	3.2	6.7	6.5	6.2	7.2	5.1
Instruction support	3.6	3.4	2.1	2.4	1.5	4.8	4.7
Other						0.2	0.2

### Comparative Information

	District			State 2006
	2004	2005	2006	
Student/teacher ratio	18.5	17.6	19.0	17.7
Average teacher salary	\$35,410	\$33,855	\$42,878	\$42,967
Average years' experience	5.3	5.5	6.6	8.3

Classroom dollar ranking: 148 of 229 districts.

### Proposition 301

#### District-reported 2006 results

##### Teacher pay

- On average, each teacher earned an additional \$6,014 in salary, which includes performance pay for fiscal year 2005 performance results.

##### Performance

- The District accomplished its goals, which were similar to the prior fiscal year's goals and were based on school and individual performance.
- 70 percent of students had to improve their performance in language, math, and reading test scores.
- Teachers received acceptable performance evaluations.
- Other goals were linked to student attendance and parent-student satisfaction.

##### Menu

- Monies continued to be used to employ 1 junior high school teacher to reduce class sizes.