

Palo Verde Elementary School District

Maricopa County

Efficiency peer groups 10 and T-8, Achievement peer group 19

Legislative district(s): 4 and 13

District size, location:

Small, Rural

Students attending:

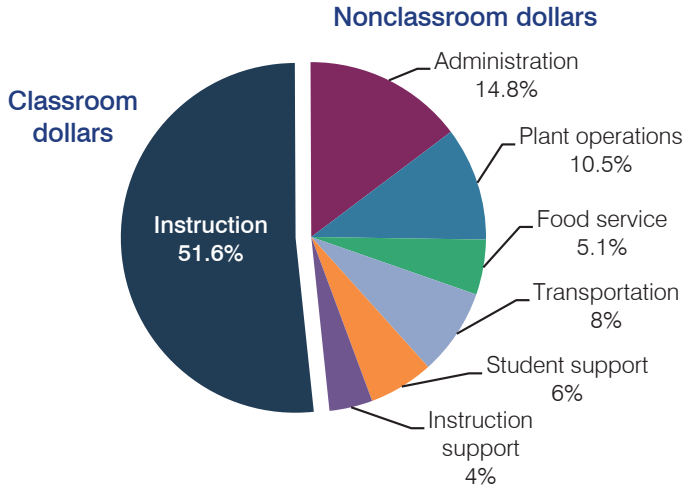
405

Number of schools:

1

OPERATIONAL EFFICIENCY

Spending by operational area



5-year spending trend

Total spending per pupil increased by 11 percent. Spending in the classroom varied year to year, increasing overall from 50.4 to 51.6 percent. Overall, spending on instruction support increased substantially, while spending on administration decreased substantially. Spending on other nonclassroom areas varied year to year.

Cost measures relative to peer averages

Operational area	Measure	District	Peer average	State average
Administration	Cost per pupil	\$1,269	\$1,130	\$746
	Students per administrator	48	55	67
Plant operations	Cost per square foot	\$5.45	\$6.14	\$6.03
	Square footage per student	165	157	153
Food service	Cost per meal equivalent	\$2.28	\$2.74	\$2.58
Transportation	Cost per mile	\$2.39	\$2.52	\$3.55
	Cost per rider	\$713	\$797	\$1,015

Very low Low Comparable High Very high

Per pupil spending by operational area

	District		Peer average	State average	National average
	2012	2013	2013	2013	2011
Total	\$8,569	\$8,585	\$8,518	\$7,496	\$10,658
Classroom dollars	4,471	4,426	4,624	4,031	6,520
Nonclassroom dollars:	4,098	4,159	3,894	3,465	4,138
Administration	1,218	1,269	1,130	746	1,138
Plant operations	917	899	976	924	1,015
Food service	391	435	511	396	412
Transportation	788	691	537	369	452
Student support	470	517	499	582	593
Instruction support	314	348	241	448	528

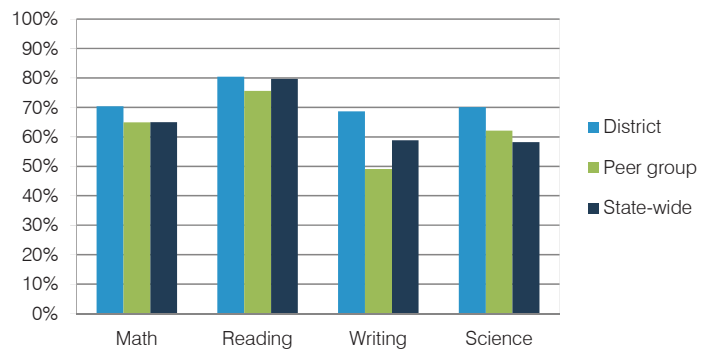
STUDENT ACHIEVEMENT, TEACHER MEASURES, AND FINANCIAL ASSESSMENT

ADE-reported district and school letter grades

District grade: **B**

Grade	Number of schools	Percentage of schools
A	0	0%
B	1	100%
C	0	0%
D	0	0%
F	0	0%
Not rated	0	0%

Students who met state standards (AIMS)



Student and teacher measures

Measure	District	Peer average	State average
Attendance rate	93%	95%	94%
Graduation rate (2012)	N/A	N/A	N/A
Poverty rate (2012)	30%	30%	25%
Students per teacher	16.2	13.9	18.3
Average teacher salary	\$42,634	\$41,809	\$45,264
Amount from Proposition 301	\$2,512	\$3,665	\$3,784
Average years of teacher experience	9.3	12.3	10.9
Percentage of teachers in first 3 years	19%	12%	19%

Financial stress assessment

Overall financial stress level: **Low**

Measure: 2011 through 2013

Assessment

Number of students attending district	Moderate decrease
Spending exceeded operating/capital budgets	No overspending
Spending increase election results	Voter-rejected
Operating reserve percentage (max. 4%), trend	4.0%, Steady
Years of capital reserve held	More than 3 years
Current financial and internal control status	Compliant

Stress level

