

Palo Verde Elementary School District

Maricopa County
Operational peer group: K
Legislative districts: 4, 25

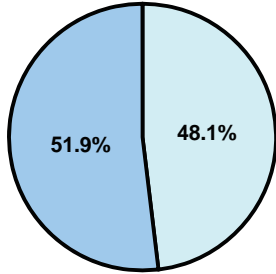
District size: Small
Students attending: 425
Number of schools: 1

OPERATIONAL EFFICIENCY

Average per-pupil spending

District
State

Classroom
\$4,569
\$4,497



Nonclassroom
\$4,232
\$3,411

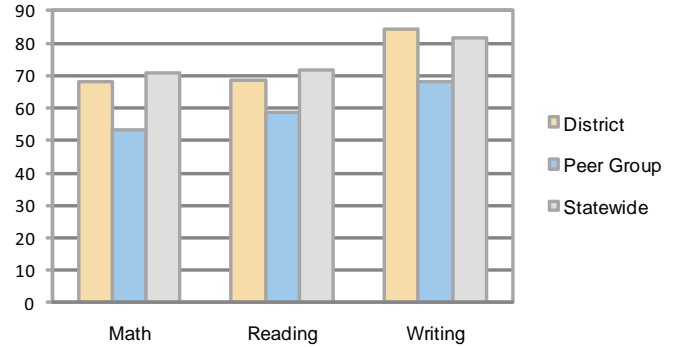
Total
\$8,801
\$7,908

5-year trend

Total spending per pupil increased by 35 percent. Spending in the classroom varied year to year and increased significantly overall from 49.9 to 51.9 percent. Spending on plant operations and student support decreased significantly, while spending in other nonclassroom areas was fairly stable.

STUDENT ACHIEVEMENT AND TEACHER INFORMATION

Percentage of students meeting state standards (AIMS)



Adequate Yearly Progress (AYP) toward federal goals

The District's school met all applicable AYP objectives for NCLB.

District's cost measures relative to peer group

Operational Area	Measure	District	Peer Average	State Average
Administration	Cost per pupil	\$1,429	\$1,288	\$729
	Students per administrator	47	70	66
Plant Operations	Cost per square foot	\$5.94	\$6.94	\$6.40
	Square footage per student	150	149	144
Food Service	Cost per meal equivalent	\$2.66	\$3.05	\$2.53
Transportation	Cost per mile	\$2.25	\$2.22	\$3.36
	Miles per rider	336	268	271

Very Low Low Comparable High Very High

Student and teacher information

Measure	District	Peer average	State average
Attendance rate	95%	94%	95%
Graduation rate (2008)	N/A	73%	75%
Poverty rate	30%	30%	19%
Student/teacher ratio	15.7	14.2	17.1
Average teacher salary	\$42,704	\$41,521	\$45,209
Average years' experience	8.2	10.8	8.3
Percent of teachers in first 3 years	30%	23%	16%

Proposition 301

Teacher pay

On average, each teacher and librarian earned between \$2,896 and \$3,213 in additional salary.

Performance pay plan goals and results

Type of goal	Goal met?
Student achievement	■
Dropout/ graduation rates	
Student attendance	■
Parent/student satisfaction	
Teacher attendance	
Teacher professional development	
Teacher evaluations	■
Tutoring	
Other	

■ = yes, □ = no, and ▮ = partially

Per-pupil spending by function

	District		Peer	State	National
	2008	2009	2009	2009	2007
Total	\$7,710	\$8,801	\$9,786	\$7,908	\$9,683
Classroom dollars	\$3,770	\$4,569	\$5,344	\$4,497	\$5,903
Nonclassroom dollars:	\$3,940	\$4,232	\$4,442	\$3,411	\$3,780
Administration	1,428	1,429	1,288	729	1,050
Plant Operations	842	891	1,162	920	951
Food Service	528	519	582	382	369
Transportation	598	660	512	343	406
Student Support	406	457	586	594	512
Instruction Support	138	276	311	431	470
Other	0	0	1	12	22