

Classroom Dollars and Proposition 301 Results

Palo Verde Elementary School District

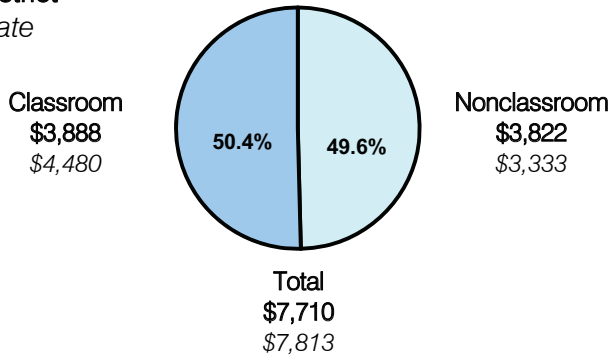
Maricopa County

District size: Small
 Students attending: 431
 Number of schools: 1
 Number of certified teachers: 22

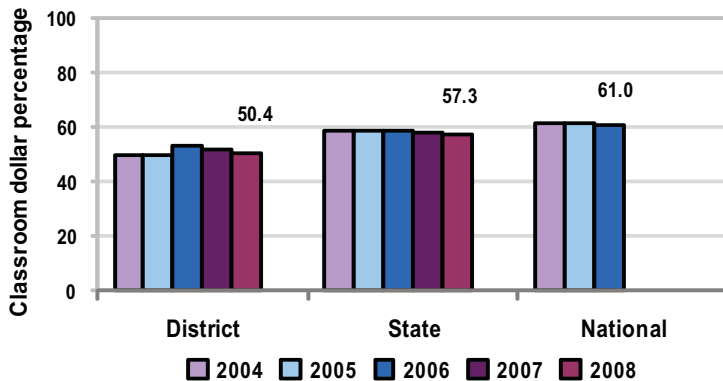
Classroom Dollars

Fiscal year 2008 averages per pupil

District
 State



5-year comparison



Expenditures by function

	District					State 2008	National 2006
	2004	2005	2006	2007	2008		
Classroom dollars	49.9	49.6	53.4	51.4	50.4	57.3	61.0
Nonclassroom dollars:							
Administration	15.8	15.7	15.0	17.8	17.0	9.2	10.8
Plant operations	12.1	12.5	11.2	10.9	10.9	11.3	9.9
Food service	6.6	6.5	6.2	6.4	6.8	4.8	3.8
Transportation	6.8	6.8	6.5	7.6	7.8	4.4	4.2
Student support	6.7	6.5	6.2	4.4	5.3	7.4	5.2
Instruction support	2.1	2.4	1.5	1.5	1.8	5.4	4.9
Other						0.2	0.2

Comparative Information

	District			State 2008
	2006	2007	2008	
Student/teacher ratio	19.0	18.6	19.6	17.3
Average teacher salary	\$42,878	\$42,364	\$44,120	\$44,967
Average years' experience	6.6	6.6	7.6	8.1

Classroom dollar ranking: 174 of 230 districts.

Proposition 301

District-reported 2008 results

Teacher pay

- On average, each teacher earned an additional \$4,597 in salary.

Performance

- The District accomplished its goals, which were the same as the prior fiscal year's goals and were based on school and individual performance.
- 70 percent of students had to exceed their grade level or demonstrate 1 year's academic growth through language, math, and reading standardized test scores.
- Teachers' performance was evaluated based on 15 effective teaching strategies.
- The District achieved the minimum state-required absence rate.
- The results of a parent satisfaction survey were positive.

Menu

- Monies continued to be used to employ 1 junior high school teacher to reduce class sizes.