

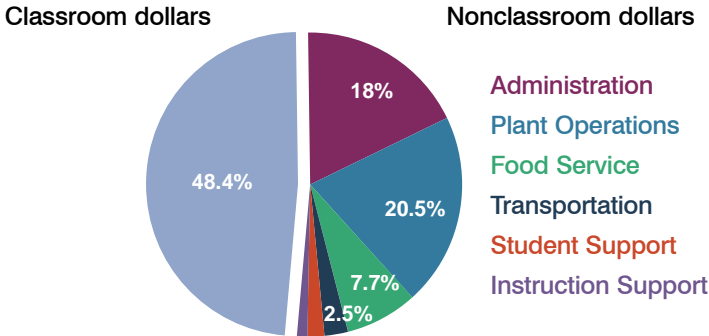
# Paloma Elementary School District

Maricopa County  
Peer groups: Efficiency Group 12, Achievement Group 22  
Legislative district(s): 25

District size: Very Small  
Students attending: 76  
Number of schools: 1

## OPERATIONAL EFFICIENCY

### Spending by operational area

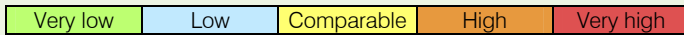


### 5-year trend

Student enrollment increased 81 percent, which contributed to the 25 percent decrease in total spending per pupil. Spending in the classroom varied year to year, decreasing overall from 50.5 to 48.4 percent. Spending on some nonclassroom areas also varied year to year, as is common for very small districts. Overall, spending on administration increased significantly.

### District's cost measures relative to peer group

Operational Area	Measure	District	Peer Average	State Average
Administration	Cost per pupil	\$2,299	\$2,437	\$728
	Students per administrator	51	30	66
Plant Operations	Cost per square foot	\$13.04	\$7.51	\$6.10
	Square footage per student	201	297	152
Food Service	Cost per meal equivalent	\$3.37	\$4.80	\$2.45
Transportation	Cost per mile	\$1.23	\$1.55	\$3.39
	Miles per rider	354	685	283



### Per-pupil spending by operational area

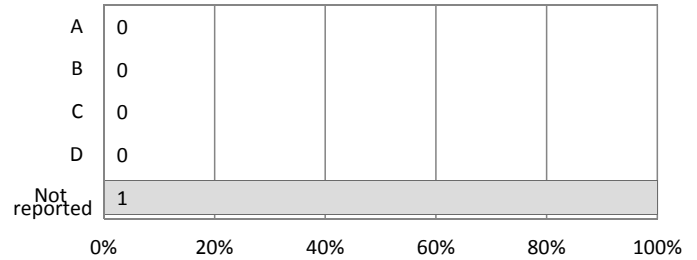
	District		Peer 2011	State 2011	National 2009
	2010	2011			
<b>Total</b>	<b>\$12,875</b>	<b>\$12,768</b>	<b>\$14,927</b>	<b>\$7,485</b>	<b>\$10,591</b>
<b>Classroom dollars</b>	<b>\$6,114</b>	<b>\$6,185</b>	<b>\$7,803</b>	<b>\$4,098</b>	<b>\$6,456</b>
<b>Nonclassroom dollars:</b>	<b>\$6,761</b>	<b>\$6,583</b>	<b>\$7,124</b>	<b>\$3,387</b>	<b>\$4,135</b>
Administration	2,393	2,299	2,437	728	1,147
Plant Operations	2,824	2,615	2,284	927	1,033
Food Service	1,044	983	742	375	404
Transportation	250	315	886	352	443
Student Support	211	230	451	571	573
Instruction Support	39	141	324	434	535

## STUDENT ACHIEVEMENT AND TEACHER INFORMATION

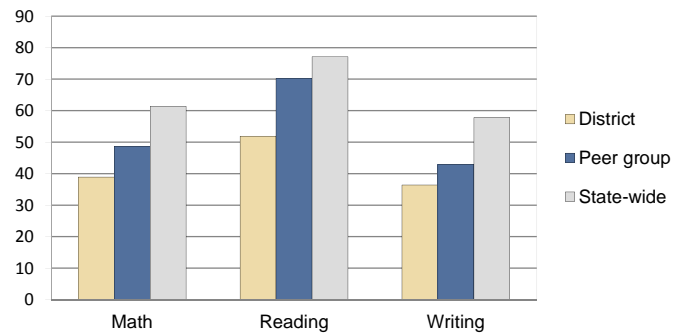
### District and school letter grades

District grade: **N/A**

### School grades (number and percentage):



### Percentage of students meeting state standards (AIMS)



### Student and teacher information

Measure	District	Peer Average	State Average
Attendance rate	95%	94%	95%
Graduation rate (2010)	N/A	N/A	N/A
Poverty rate (2010)	73%	54%	22%
Students per teacher	13.9	13.8	18.1
Average teacher salary	\$43,018	\$43,606	\$45,637
Average years of experience	13.7	10.0	10.9
Percent of teachers in first 3 years	0%	12%	16%

### Proposition 301 pay, goals, and results

Average additional salary earned by teachers: \$2,243

Type of goal	Goal met?
Student achievement	■
Dropout/graduation rates	-
Student attendance	-
Parent/student satisfaction	■
Teacher attendance	-
Teacher professional development	■
Teacher evaluations	-
Tutoring	-
Other	■

■ = yes, □ = no, ▴ = partially, and - = no goal set