

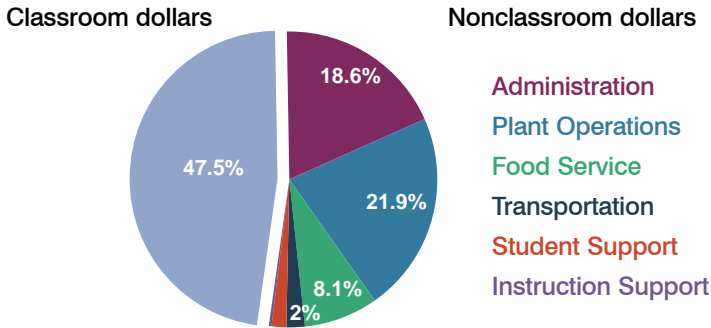
Paloma Elementary School District

Maricopa County
Peer groups: Efficiency 12, Achievement 9
Legislative district(s): 25

District size: Very Small
Students attending: 75
Number of schools: 1

OPERATIONAL EFFICIENCY

Spending by function



5-year trend

Student enrollment increased by 28 percent, which contributed to the increase of only 5 percent in total spending per pupil. Spending in the classroom was very inconsistent year to year, decreasing overall from 48.1 to 47.5 percent. Spending on administration increased significantly, while spending on plant operations and transportation decreased significantly.

District's cost measures relative to peer group

Operational Area	Measure	District	Peer Average	State Average
Administration	Cost per pupil	\$2,393	\$2,444	\$721
	Students per administrator	75	32	66
Plant Operations	Cost per square foot	\$13.86	\$7.59	\$6.25
	Square footage per student	204	297	146
Food Service	Cost per meal equivalent	\$3.90	\$4.85	\$2.41
Transportation	Cost per mile	\$1.82	\$1.87	\$3.35
	Miles per rider	303	611	282

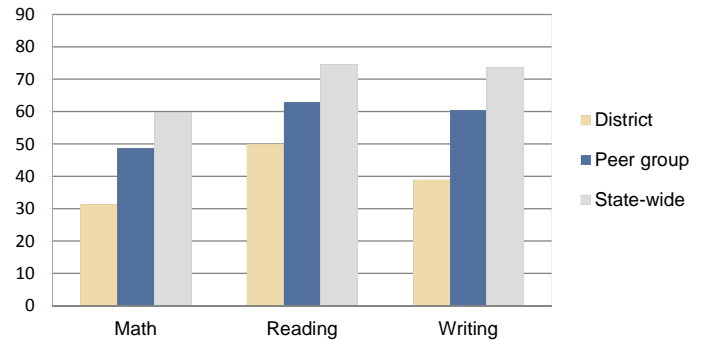
Very low Low Comparable High Very high

Per-pupil spending by function

	District		Peer 2010	State 2010	National 2008
	2009	2010			
Total	\$15,288	\$12,875	\$15,187	\$7,609	\$10,297
Classroom dollars	\$7,665	\$6,114	\$8,084	\$4,253	\$6,262
Nonclassroom dollars:	\$7,623	\$6,761	\$7,103	\$3,356	\$4,035
Administration	2,392	2,393	2,444	721	1,109
Plant Operations	3,342	2,824	2,188	914	1,003
Food Service	1,107	1,044	751	366	390
Transportation	428	250	924	342	438
Student Support	0	211	473	581	556
Instruction Support	354	39	323	432	539

STUDENT ACHIEVEMENT AND TEACHER INFORMATION

Percentage of students meeting state standards (AIMS)



Adequate Yearly Progress (AYP) toward federal goals

The District's school met all applicable AYP objectives for NCLB.

Student and teacher information

Measure	District	Peer Average	State Average
Attendance rate	94%	93%	94%
Graduation rate (2009)	N/A	N/A	76%
Poverty rate (2009)	43%	49%	21%
Student/teacher ratio	16.7	10.7	17.9
Average teacher salary	\$51,317	\$42,652	\$47,077
Average years' experience	11.5	10.1	10.6
Percent of teachers in first 3 years	17%	19%	20%

Proposition 301

Teacher and other staff pay

On average, each teacher earned \$3,115 in additional pay, and each instructional aide earned \$166.

Performance pay plan goals and results

Type of goal	Goal met?
Student achievement	■
Dropout/graduation rates	-
Student attendance	-
Parent/student satisfaction	■
Teacher attendance	-
Teacher professional development	■
Teacher evaluations	-
Tutoring	-
Other	-

■ = yes, □ = no, ▴ = partially, and - = no goal set