

Paloma Elementary School District

Maricopa County
Operational peer group: L
Legislative districts: 25

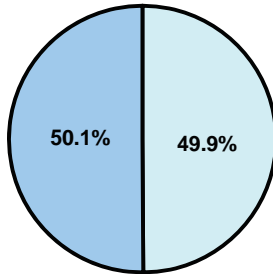
District size: Very Small
Students attending: 64
Number of schools: 1

OPERATIONAL EFFICIENCY

Average per-pupil spending

District
State

Classroom
\$7,665
\$4,497



Nonclassroom
\$7,623
\$3,411

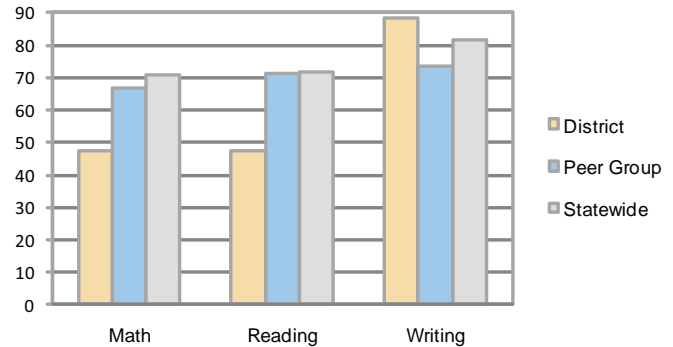
Total
\$15,288
\$7,908

5-year trend

Although student enrollment declined by only 3 percent, total spending per pupil increased by 49 percent. Spending in the classroom was very inconsistent year to year and increased significantly overall from 46.6 to 50.1 percent. Spending on administration and transportation decreased, while spending in other nonclassroom areas varied year to year.

STUDENT ACHIEVEMENT AND TEACHER INFORMATION

Percentage of students meeting state standards (AIMS)



Adequate Yearly Progress (AYP) toward federal goals

The District's school met all applicable AYP objectives for NCLB.

Student and teacher information

Measure	District	Peer average	State average
Attendance rate	94%	94%	95%
Graduation rate (2008)	N/A	54%	75%
Poverty rate	27%	31%	19%
Student/teacher ratio	10.6	10.8	17.1
Average teacher salary	\$44,314	\$45,165	\$45,209
Average years' experience	10.5	12.7	8.3
Percent of teachers in first 3 years	17%	15%	16%

District's cost measures relative to peer group

Operational Area	Measure	District	Peer Average	State Average
Administration	Cost per pupil	\$2,392	\$2,656	\$729
	Students per administrator	64	32	66
Plant Operations	Cost per square foot	\$13.95	\$7.53	\$6.40
	Square footage per student	239	318	144
Food Service	Cost per meal equivalent	\$4.32	\$5.10	\$2.53
Transportation	Cost per mile	\$1.74	\$1.79	\$3.36
	Miles per rider	414	710	271

Very Low Low Comparable High Very High

Per-pupil spending by function

	District		Peer	State	National
	2008	2009	2009	2009	2007
Total	\$11,384	\$15,288	\$16,311	\$7,908	\$9,683
Classroom dollars	\$5,850	\$7,665	\$8,757	\$4,497	\$5,903
Nonclassroom dollars:	\$5,534	\$7,623	\$7,554	\$3,411	\$3,780
Administration	1,685	2,392	2,656	729	1,050
Plant Operations	2,495	3,342	2,297	920	951
Food Service	828	1,107	859	382	369
Transportation	312	428	930	343	406
Student Support	0	0	474	594	512
Instruction Support	214	354	338	431	470
Other	0	0	0	12	22

Proposition 301

Teacher pay

On average, each teacher earned \$3,457 in additional salary, and each instructional aide earned an additional \$411.

Performance pay plan goals and results

Type of goal	Goal met?
Student achievement	▲
Dropout/ graduation rates	
Student attendance	
Parent/student satisfaction	■
Teacher attendance	
Teacher professional development	■
Teacher evaluations	
Tutoring	
Other	■

■ = yes, □ = no, and ▲ = partially