

# Classroom Dollars and Proposition 301 Results

## Paloma Elementary School District

Maricopa County

District size: Very Small  
 Students attending: 62  
 Number of schools: 1  
 Number of certified teachers: 5

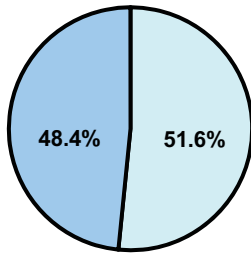
### Classroom Dollars

Fiscal year 2007 averages per pupil

District

State

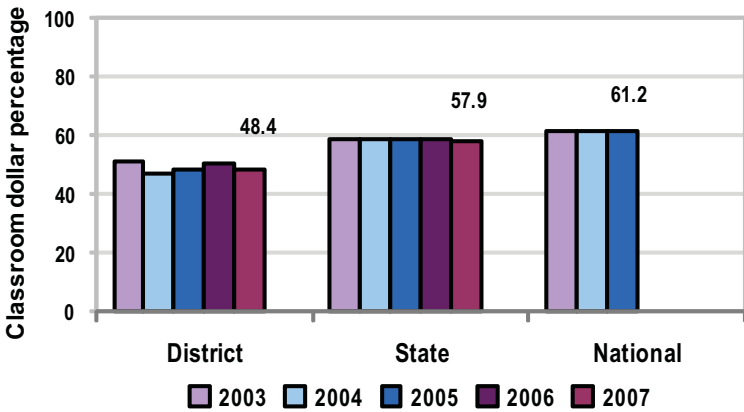
Classroom  
\$5,782  
\$4,277



Nonclassroom  
\$6,159  
\$3,105

Total  
\$11,941  
\$7,382

5-year comparison



Expenditures by function

	District					State 2007	National 2005
	2003	2004	2005	2006	2007		
Classroom dollars	50.8	46.6	48.1	50.5	48.4	57.9	61.2
Nonclassroom dollars:							
Administration	17.4	18.5	14.1	14.6	14.3	9.5	11.0
Plant operations	17.0	20.8	24.1	22.8	22.9	11.3	9.6
Food service	7.9	7.9	7.4	6.5	9.1	4.7	3.9
Transportation	4.9	4.7	4.9	3.9	2.4	4.3	4.1
Student support	1.4				1.5	7.3	5.2
Instruction support	0.6	1.5	1.4	1.7	1.4	4.8	4.8
Other						0.2	0.2

### Comparative Information

	District			State 2007
	2005	2006	2007	
Student/teacher ratio	11.7	8.4	12.4	17.4
Average teacher salary	\$41,992	\$34,717	\$37,064	\$43,833
Average years' experience	9.4	9.8	8.2	8.1

Classroom dollar ranking: 185 of 229 districts.

### Proposition 301

#### District-reported 2007 results

##### Teacher pay

- On average, each teacher earned an additional \$1,714 in salary, and each instructional aide earned an additional \$428.

##### Performance

- The District accomplished most of its goals, which were based on individual performance.
- Teachers met at least 7 of 10 student achievement goals that were based on standardized test scores.
- Teachers also attended at least 50 hours of professional development seminars, in-service days, conferences, and workshops.
- At least 70 percent of parents surveyed gave the District satisfactory ratings.

##### Menu

- Monies were used solely to increase eligible employee compensation.