

# Palominas Elementary School District

Cochise County

Efficiency peer groups 9 and T-9, Achievement peer group 16<sup>1</sup>

Legislative district(s): 14

District size, location:

Medium, Rural

Students attending:

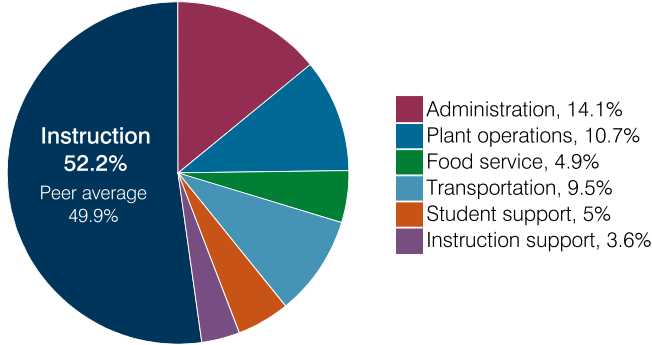
880

Number of schools:

3

## OPERATIONAL EFFICIENCY

### Spending by operational area



### Efficiency measures relative to peer averages

Operational area	Measure	District	Peer average	State average
Administration	Cost per pupil	\$1,211	\$1,098	\$860
	Students per administrative position	49	59	66
Plant operations	Cost per square foot	\$6.20	\$6.52	\$6.34
	Square footage per student	148	161	156
Food service	Cost per meal	\$3.77	\$3.10	\$3.02
Transportation	Cost per mile	\$2.20	\$2.62	\$4.05
	Cost per rider	\$1,240	\$1,457	\$1,301

Very low    Low    Comparable    High    Very high

### Per pupil spending

Spending by area	District		Peer average 2018	State average 2018
	2017	2018		
Instruction	\$ 4,348	\$ 4,474	\$ 4,233	\$ 4,480
Administration	1,065	1,211	1,098	860
Plant operations	960	914	1,034	988
Food service	408	417	591	425
Transportation	757	807	526	388
Student support	436	432	584	693
Instruction support	366	308	462	462
<b>Total operational</b>	<b>8,340</b>	<b>8,563</b>	<b>8,528</b>	<b>8,296</b>
Land and buildings	159	480	416	827
Equipment	374	566	316	409
Interest	31	33	75	228
Other	40	54	170	169
<b>Total nonoperational</b>	<b>604</b>	<b>1,133</b>	<b>977</b>	<b>1,633</b>
<b>Total per pupil spending</b>	<b>\$ 8,944</b>	<b>\$ 9,696</b>	<b>\$ 9,505</b>	<b>\$ 9,929</b>

<sup>1</sup> See Appendix A for information such as districts included in each peer group and Appendix B for sources and methodology.

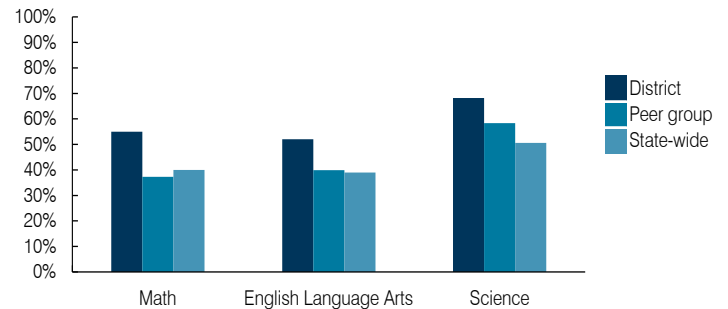
## STUDENT ACHIEVEMENT, STUDENT AND TEACHER MEASURES, AND REVENUES

### ADE-assigned school letter grades

Grade	Number of schools <sup>2</sup>	Percentage of schools
A	0	0%
B	2	100%
C	0	0%
D	0	0%
F	0	0%

<sup>2</sup> Excludes schools for which letter grades were not published by ADE. See Appendix B for more information.

### Students who passed State assessments



### Student and teacher measures

Measure	District	Peer average	State average
Attendance rate	93%	94%	94%
Graduation rate (2017)	N/A	N/A	N/A
Poverty rate (2017)	14%	12%	19%
Special education population	14%	16%	12%
Students per teacher	17.3	13.4	18.4
Average teacher salary	\$43,077	\$48,478	\$48,951
Amount from Prop 301	\$7,445	\$4,651	\$6,411
Average years of teacher experience	11.5	15.3	11.4
Percentage of teachers in first 3 years	14%	6%	19%

### Per pupil revenues

Revenues by source	District		Peer average 2018	State average 2018
	2017	2018		
Federal	\$ 1,472	\$ 1,110	\$ 1,836	\$ 1,317
State	5,857	6,341	4,904	4,011
Local	2,424	3,002	2,715	4,592
<b>Total per pupil revenues</b>	<b>\$ 9,753</b>	<b>\$10,453</b>	<b>\$ 9,455</b>	<b>\$ 9,920</b>

### Select revenues from common sources

Equalization formula funding	\$ 6,572	\$ 6,264	\$ 5,707	\$ 5,585
Grants	1,470	1,764	2,113	1,241
Donations and tax credits	35	30	67	90

### Select revenues from less common sources

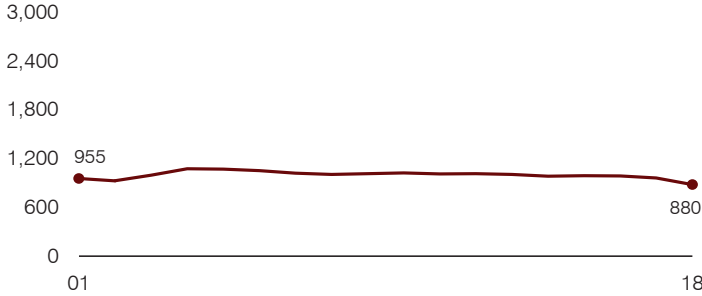
			Number of peers receiving
Desegregation	\$ 0	\$ 0	0 of 10
Small school adjustment	0	0	0 of 10
Federal impact aid	45	62	3 of 10
Voter-approved levy increases	0	0	8 of 10

**Instructional spending percentage**

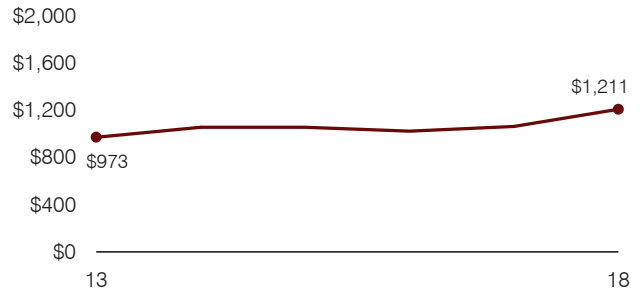
Year:	2001	2002	2003	2004	2005	2006	2007	2008	2009	2010	2011	2012	2013	2014	2015	2016	2017	2018
Percentage:	55.4	54.9	54.2	55.7	54.3	55.6	55.5	55.9	54.1	53.8	51.5	50.3	51.1	50.5	52.9	53.9	52.1	52.2

**TRENDS AND FINANCIAL STRESS ASSESSMENT**  
Fiscal years as indicated

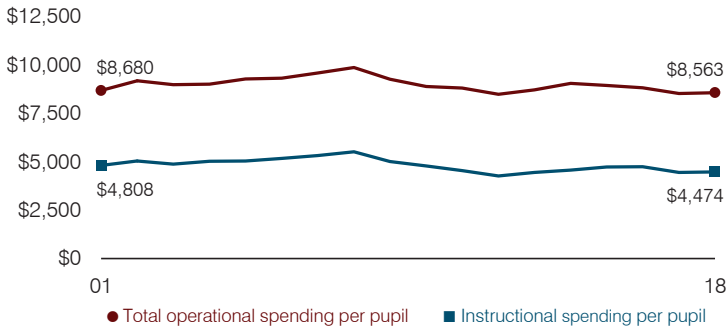
**Students attending**



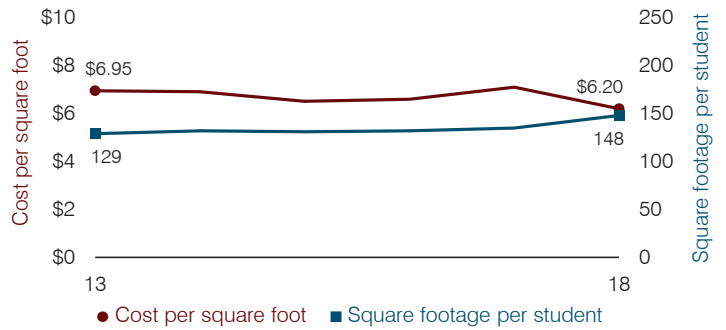
**Administrative cost per pupil**



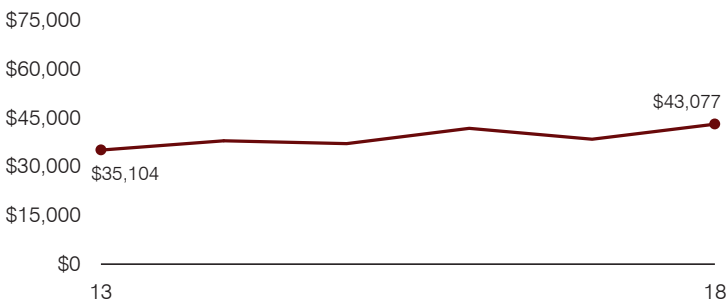
**Total operational and instructional spending per pupil (inflation adjusted to 2018 dollars)**



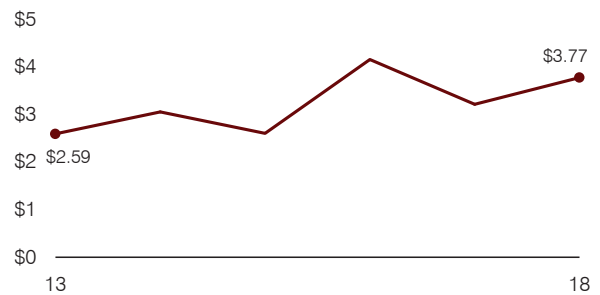
**Plant cost per square foot and square footage per student**



**Average teacher salary**



**Food service cost per meal**



**Financial stress assessment**

Overall financial stress level:	<b>Low</b>
<b>Measure: 2016 through 2018</b>	<b>Assessment</b>
Change in number of district students	Large decrease
Spending exceeded operating/capital budgets	No overspending
Spending increase election results	No election held
Operating reserve percentage, Trend	13.6%, Increasing
Years of capital reserve held	More than 3 years
Current financial and internal control status	Compliant
	<b>Low      Moderate      High</b>

**Transportation costs per mile and per rider**

