

# Palominas Elementary School District

Cochise County

Efficiency peer groups 9 and T-8, Achievement peer group 19

Legislative district(s): 14

District size, location:

Medium, Rural

Students attending:

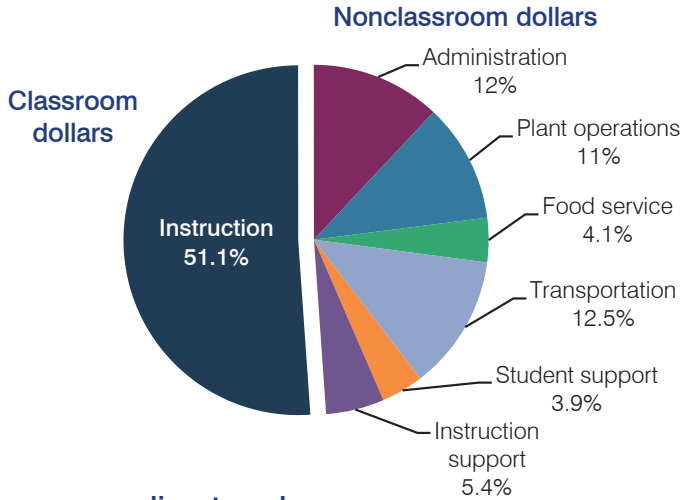
1,005

Number of schools:

3

## OPERATIONAL EFFICIENCY

### Spending by operational area



### 5-year spending trend

Total spending per pupil decreased by 3 percent. Spending in the classroom decreased from 55.9 to 51.1 percent. Overall, spending on instruction support increased substantially and spending on administration and transportation increased. Spending on student support decreased slightly and spending on other nonclassroom areas remained fairly stable.

### Cost measures relative to peer averages

Operational area	Measure	District	Peer average	State average
Administration	Cost per pupil	\$973	\$883	\$746
	Students per administrator	69	65	67
Plant operations	Cost per square foot	\$6.95	\$6.31	\$6.03
	Square footage per student	129	135	153
Food service	Cost per meal equivalent	\$2.59	\$2.63	\$2.58
Transportation	Cost per mile	\$2.11	\$2.52	\$3.55
	Cost per rider	\$811	\$797	\$1,015

Very low   Low   Comparable   High   Very high

### Per pupil spending by operational area

	District		Peer average	State average	National average
	2012	2013	2013	2013	2011
<b>Total</b>	<b>\$7,779</b>	<b>\$8,126</b>	<b>\$7,185</b>	<b>\$7,496</b>	<b>\$10,658</b>
<b>Classroom dollars</b>	<b>3,911</b>	<b>4,152</b>	<b>3,621</b>	<b>4,031</b>	<b>6,520</b>
<b>Nonclassroom dollars:</b>	<b>3,868</b>	<b>3,974</b>	<b>3,564</b>	<b>3,465</b>	<b>4,138</b>
Administration	923	973	883	746	1,138
Plant operations	909	898	836	924	1,015
Food service	308	332	535	396	412
Transportation	941	1,013	431	369	452
Student support	382	319	435	582	593
Instruction support	405	439	444	448	528

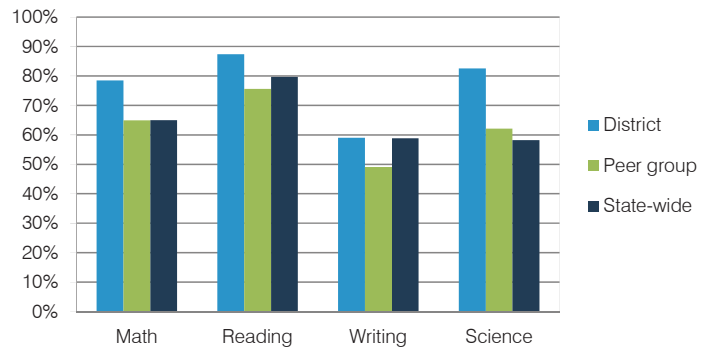
## STUDENT ACHIEVEMENT, TEACHER MEASURES, AND FINANCIAL ASSESSMENT

### ADE-reported district and school letter grades

District grade: **A**

Grade	Number of schools	Percentage of schools
A	2	67%
B	1	33%
C	0	0%
D	0	0%
F	0	0%
Not rated	0	0%

### Students who met state standards (AIMS)



### Student and teacher measures

Measure	District	Peer average	State average
Attendance rate	94%	95%	94%
Graduation rate (2012)	N/A	N/A	N/A
Poverty rate (2012)	31%	30%	25%
Students per teacher	15.2	13.9	18.3
Average teacher salary	\$35,104	\$41,809	\$45,264
Amount from Proposition 301	\$2,514	\$3,665	\$3,784
Average years of teacher experience	12.0	12.3	10.9
Percentage of teachers in first 3 years	13%	12%	19%

### Financial stress assessment

Overall financial stress level: **Low**

Measure: 2011 through 2013

Assessment

Number of students attending district	Steady
Spending exceeded operating/capital budgets	No overspending
Spending increase election results	No election held
Operating reserve percentage (max. 4%), trend	Impact Aid Fund reserve
Years of capital reserve held	More than 3 years
Current financial and internal control status	Compliant

Stress level

